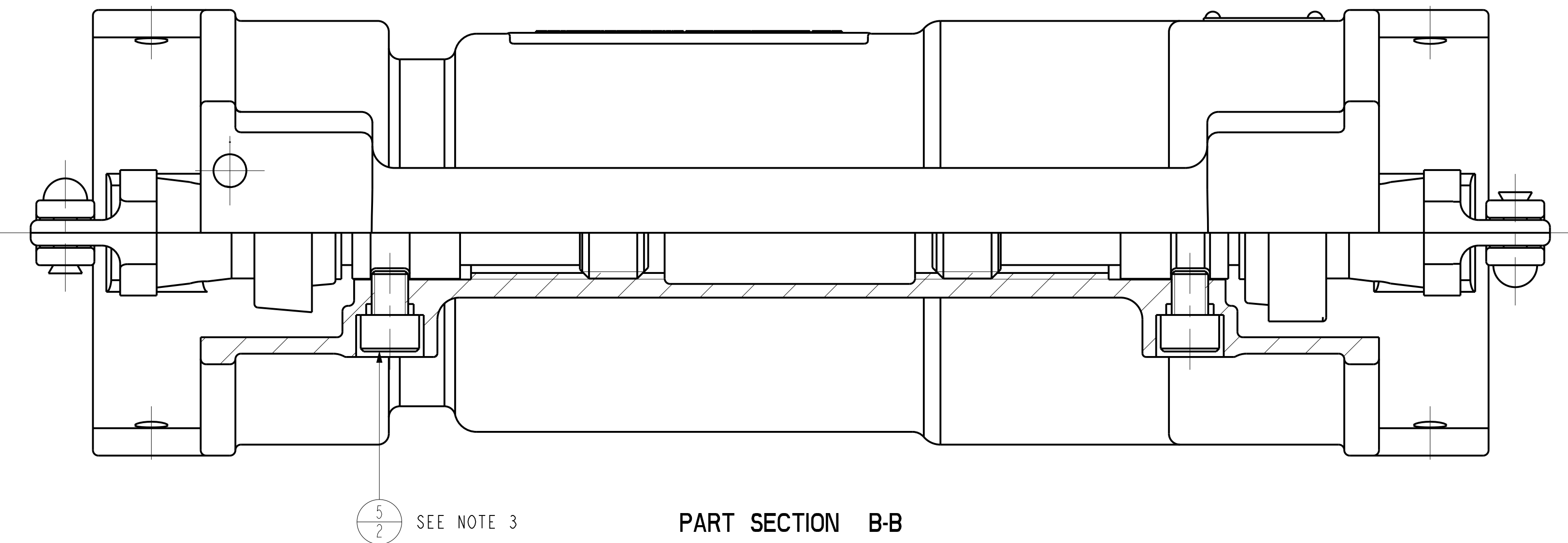


PART VIEW ON ARROW 'C'
SHOWING NAMEPLATE.
NAMEPLATE CAN BE FIXED TO
OPPOSITE SIDE OR ENDS.



REF	ITEM NO.	DESCRIPTION	QTY
1	121527	GASKET	2
2	123573	RETAINING SLEEVE - TYPE A42SCR	1
3	124041	O RING	1
4	124955	INSTALLATION LEAFLET	1
5	218202	SOCKET HEAD CAP SCREW - M10 X 12 LONG	2
6	921233	WITHDRAWAL SPINDLE ASSEMBLY	2
7	923358	EARTH SCRAPER ASSEMBLY	1
8	923572	EARTHING DISC - TYPE A42SCR	1
9	923576	EARTH SCRAPER ASSEMBLY	1
10	923582	INSULATOR ASSEMBLY - TYPE A42SCR	1

CERTIFICATE RELATED DRAWING
NO MODIFICATIONS PERMITTED
WITHOUT THE APPROVAL OF
THE TECHNICAL MANAGER

DO NOT SCALE
DIMENSIONS IN MILLIMETRES (mm)
MAXIMUM MACHINED SURFACE
TEXTURE $\mu\text{m Ra } 3.2$
MACHINE WHERE MARKED THUS ✓
ANGULAR TOLERANCES $\pm 1/2^\circ$
DIMENSIONAL TOLERANCES
UNLESS OTHERWISE STATED
UPTO 6 ± 0.1
OVER 6 UPTO 30 ± 0.2
OVER 30 UPTO 100 ± 0.3
OVER 100 UPTO 300 ± 0.5
OVER 300 ± 0.8

TEST No.	PROCESS No.
---	---

DRAWN	HD
DATE	19/09/23
CHECKED	19/09/23 HD
APPROVED	19/09/23 HD
SCALE	1:1

STYLE NO. MCA002746E

DRN 19/09/23 HD
CHK 19/09/23 HD APP 19/09/23 HD
REDRAWN ON CAD.

TYPE A42SCR 250A 650/1300V
RESTRAINED PLUG COUPLER

Victor Victor Products Limited
Unit 3A, Tyne Dock East Side,
Port of Tyne, South Shields,
Tyne and Wear, NE33 5SQ,
United Kingdom.

DRAWING No.
SHEET 1 OF 1
CP305

ISSUE No.
1