

Victor Products Ltd
 Unit 3A, Tyne Dock East Side
 Port of Tyne,
 South Shields,
 Tyne and Wear
 NE33 5SQ
 United Kingdom
 Tel : +44(0)191 2808000
 Fax : +44(0)191 2808080



Making Hazardous Environments Work

Type A41 Range of 250Amp 650/1300Volt Dual Voltage Flameproof Sockets

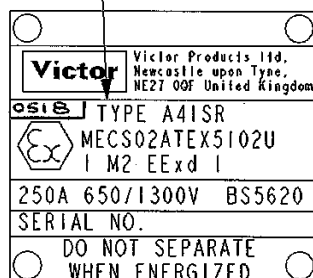
Certification : A41SR, A41SR/A, A41SR/B, A41SR/C, A41SR/D, A41SR/E, A41SR/F, A41SR/G, A41SR/H, A41SR/J, A41SR/K, A41SR/L, MECS02ATEX5102U

Type A41SB MECS02ATEX5097U

The ATEX certificate carries the ATEX group and category marking: - I M2

Where: I signifies suitability for use in mining and M2 signifies suitability for use in mines where it must be de-energised in the presence of an explosive atmosphere.

TYPE NO. AS
 APPROPRIATE



NAMEPLATE DETAIL
 RESTRAINED SOCKETS

TYPE NO. AS
 APPROPRIATE



NAMEPLATE DETAIL
 BOLTED SOCKETS

General

These sockets are designed in accordance with EN50014:1997 and EN50018:2000. They can be associated with any relevant certified connectors for flameproof enclosures Group I apparatus that complies dimensionally with BS5620, in this way connectors complying with BS5620 and certified to BS5501, or BS4683, or BS229 can be intermixed. The Type A41SR/D, A41SR/E, A41SR/F, A41SR/G, A41SR/K, and A41SR/L have a non-standard cam slot and can be associated with Restrained Plugs Type A41PR/B and A41PR/C covered by certificate no. MECS02ATEX5101U, Restrained Plug Type 41PR/B covered by certificate no. 94C5244U, Restrained Plug Type 20PR/D, covered by certificate no. 80027, and Restrained Plug Type KGX covered by certificate no. 72006. The Type A41SR/A, A41SR/B, A41SR/E, A41SR/F, A41SR/H, A41SR/J, A41SR/K, A41SR/L are I.P.C. (Interrupted Pilot Circuit) Sockets and are for use on pilot control systems and are fitted with a Type A39PI or A39PI/A I.P.C. Connector covered by certificate no. MECS01ATEX5399U.

Installation - all

1. Installation, maintenance, and inspection, must be carried out by suitably qualified personnel in accordance with established codes of practice.
2. Restrained type of plugs and sockets are for use only with electrical interlock.
 Bolted types of plugs and sockets may be used with or without electrical interlock.
3. Ensure that the rated voltage and current are compatible with the power supply and load requirements. The sockets can be dismantled the insulators turned through 180° and re-assembled.

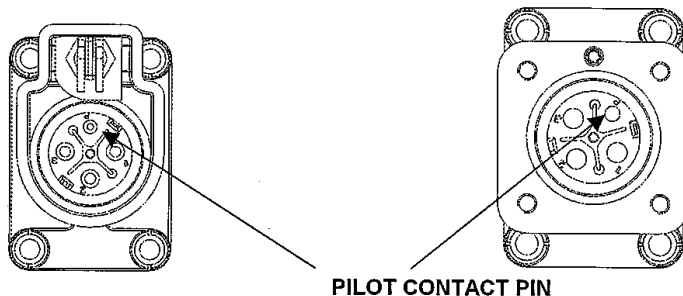


Fig.1 RESTRAINED SOCKET IN 1300V MODE

Fig.2 BOLTED SOCKET IN 1300V MODE

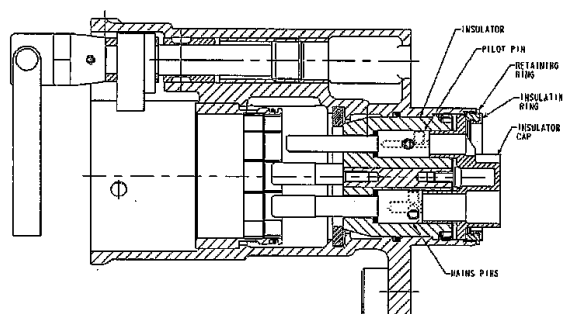


Fig.3 RESTRAINED SOCKET SHOWN IN 1300V MODE
(Assembly process of Bolted Socket is the same)

4. Remove Retaining and Insulating Rings followed by Insulator Cap and Insulator (including Contact Pins. (On some variants the Retaining Ring is replaced with a circlip).
5. The Contact Pins can be either grubscrewed type or crimped. For the grubscrewed variant the mains conductor should be bared 15mm and the pilot 25mm. For the crimped variant the mains conductor should be bared 15mm and the pilot 13mm. The conductor can now be fed through the Retaining Ring/Insulating Ring and Insulator Cap.
6. For the grubscrew pins, insert conductor and ensure that the screws are fully tightened down.
7. For crimped pins the screws and sleeving must be removed. Insert conductor. The crimp should be equally spaced on the end portion. Use crimping dies 'Erma' ref. HJ or 'BICC' ref. U855 or 'Neilson' ref. ME14 on the Mains Pin, and 'Erma' ref. HF or HG, or 'BICC' ref. U854, or 'Neilson' ref. MK8 on the Pilot Pin. After crimping replace the sleeving and screws. See fig.4.

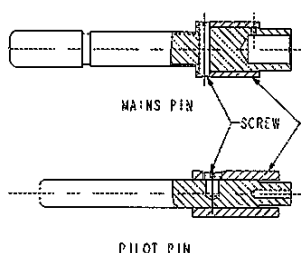


Fig.4 CRIMPED PIN
DETAILS

8. Re-assemble the socket as shown in fig. 3.
9. Ensure that when the plugs are connected for use, with their mating approved sockets, that they are fully engaged.
Restrained plugs are fully engaged with their sockets when the handle on the socket is wound fully home.
Bolted plugs are fully engaged with their sockets when the two mating flanges meet and the four bolts are fully tightened.

Installation – I.P.C. Types only

1. The I.P.C. (Interrupted Pilot Circuit) Restrained Sockets are for use on pilot control systems. There are two basic types available, the Type A41SR/A with one insulated pilot terminal and one direct earth terminal on the gland outlet, and the Type A41SR/B has two insulated terminals on the gland outlet, and has two loose connection tails at the socket spigot, see Fig.6. **Important-** when connecting associated equipment, ensure that the terminals are connected to the earth or pilot as required by the particular system.

2. The I.P.C. Connector is the Type A39PI or A39PI/A and is covered by certificate MECS01ATEX5399U. It is designed for use with Type 62 cable to BS 6708:1998. A copy of the full installation leaflet is available on request although cable make off and assembly details are shown in Fig.5.

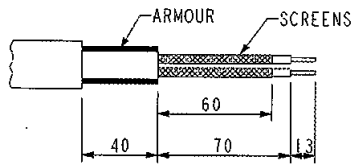


Fig.5. CABLE MAKE OFF AND ASSEMBLY DETAILS OF TYPE A39PI I.P.C. CONNECTOR

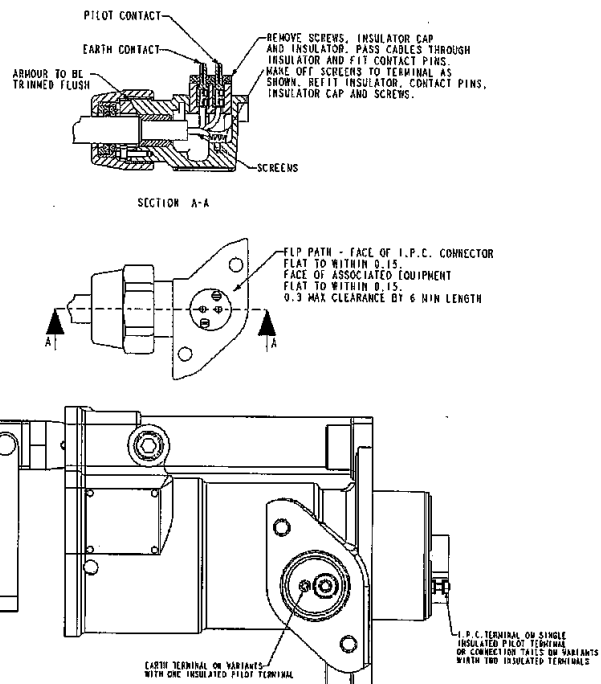


Fig.6. RESTRAINED SOCKET WITH I.P.C.

Accessories

The Bolted and Restrained Sockets can be fitted with Victor Closer Caps.

The I.P.C. Restrained Sockets can be fitted with the following Victor accessories - Rectifier and Blanking Cover, Blanking Cover only, and Stop/Start or Emergency Stop Switch.

Maintenance and Inspection

It should be noted that all components that are replaced must be in accordance with the manufacturer's specifications. Failure to use such components invalidates the certification and approval and may make the apparatus dangerous. NO modifications should be made to the apparatus without the knowledge and approval of the manufacturer. If in doubt, refer to the manufacturer. A copy of the Spare Parts List is available from Victor Products Ltd.

Before re-assembly ensure that all flameproof paths are visually inspected and dimensionally checked for any abnormality.

HEALTH AND SAFETY AT WORK etc. ACT 1974

In the United Kingdom all equipment must be installed, operated and disposed of (as required) within the legislative requirements of the Health and Safety at Work etc. Act 1974. Leaflet No. HSS L1 refers to the Company's obligation and is available on request.

It is the responsibility of the user to select, install, operate and maintain the equipment in accordance with the relevant legislation and appropriate code of practice.



Prices and design are subject to alteration without notice. All products are sold subject to our conditions of sale, copies of which are available on request.

We reserve the right to change characteristics of our products. All data is for guidance only

Attestation of Conformity

Attestation de Conformité
Konformitätsbescheinigung



Victor Products Ltd
Unit 3A, Tyne Dock East Side
Port of Tyne,
South Shields,
Tyne and Wear
NE33 5SQ
United Kingdom

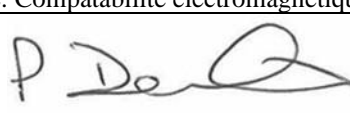
**Type A41 Range of 250Amp 650/1300Volt Dual Voltage Flameproof Sockets
A41SR, A41SR/A, A41SR/B, A41SR/C, A41PR/D, A41SR/E, A41SR/F, A41SR/G, A41SR/H, A41SR/J, A41SR/K,
A41SR/L, MECS02ATEX5102U and Type A41SB MECS02ATEX5097U**

Victor Products Ltd

Hereby declare our sole responsibility that the product which is the subject of this attestation is in conformity with the following standards or normative documents.

Erklären in alleiniger Verantwortung, daß das Product auf das sich diese Bescheinigung bezieht, mit der/den folgenden Norm(en) oder normativen Dokumenten Ubereinstimmt.

Déclarons de notre seule responsabilité, que le produit auquel cette attestation se rapporte, est conforme aux norme(s) ou aux documents normatifs suivants.

Number and date of standard Nr. Sowie Ausgabedatum der Norm No. Ainsi que date d'émission des normes.	Directive description Bestimmungen der Richtlinie Prescription de la directive
EN 50014 (1998) EN 50018 (2000) <i>This equipment has been reviewed against the requirements of EN60079-0: 2018 and EN60079-1: 2014, in respect of the differences from the standards to which this certificate was issued; none of these differences affect this equipment.</i> Dieses Gerät wurde hinsichtlich der Unterschiede zu den Standards, für die dieses Zertifikat ausgestellt wurde, mit den Anforderungen von EN60079-0: 2018 und EN60079-1: 2014 verglichen. Keiner dieser Unterschiede wirkt sich auf dieses Gerät aus. Cet équipement a été passé en revue contre les conditions d'EN60079-0 : 2018 et EN60079-1 : 2014, en ce qui concerne les différences des normes auxquelles ce certificat a été délivré ; aucune de ces différences n'affecte cet équipement.	Equipment and protective systems intended for use in potentially explosive atmospheres. This Attestation is valid for directive 2014/34/EU. Geräte und Schutzsysteme zur bestimmungsgemäßen Verwendung in explosionsgefährdeten Bereichen. Diese Bescheinigung gilt für die Richtlinie 2014/34 /EU. Appareils et systèmes de protection destinés à être utilisés en atmosphères explosibles. Cette Attestation est valable pour la directive 2014/34 /UE.
EN50082 (1992) EN55015 (1993) EN 60555-2 (1987)	89/336 EEC: Electromagnetic Compatibility 89/336 EWG: Elektromagnetische Verträglichkeit 89/336 CEE: Compatibilité électromagnétique
Notified Body: CSA Group Netherlands B.V. Notified Body No. 2813	 P. Devlin Operations Manager January 2024

SERIAL NUMBER