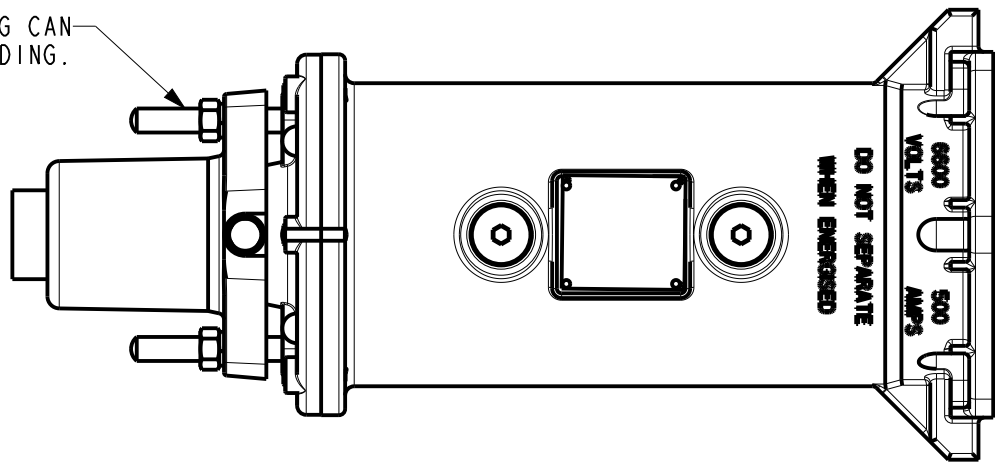
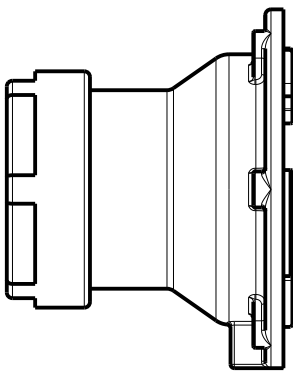


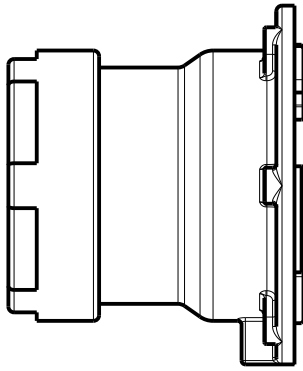
ADDITIONAL EARTHING CAN
BE ATTACHED TO STUDDING.



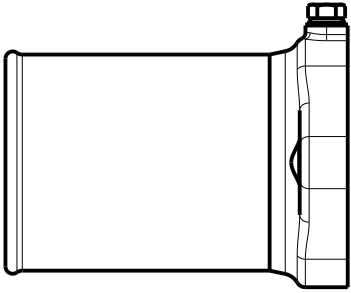
HALF COUPLER ASSEMBLY WITH
TYPICAL SWA GLAND FITTED.



TYPICAL GLAND FOR USE
WITH UNARMOURED CABLE.
50.0 TO 75.0 DIAMETER.



TYPICAL GLAND FOR USE
WITH UNARMOURED CABLE.
75.5 TO 95.0 DIAMETER.



TYPICAL GLAND FOR USE
WITH PWA/SWA CABLE.



6.6KV INTERCONNECTING PIN.

APPROXIMATE WEIGHTS:
30Kgs UNFILLED
42Kgs FILLED.

DRAWING No.	ISSUE No.
CP293	2



CERTIFICATE RELATED DRAWING

NO MODIFICATIONS PERMITTED
WITHOUT THE APPROVAL OF
THE TECHNICAL MANAGER

DO NOT SCALE

DIMENSIONS IN MILLIMETRES (mm)
MAXIMUM MACHINED SURFACE
TEXTURE $\mu m Ra 3.2$
MACHINE WHERE MARKED THUS ✓

ANGULAR TOLERANCES $\pm 1/2^\circ$

DIMENSIONAL TOLERANCES
UNLESS OTHERWISE STATED

UPTO 6	± 0.1
OVER 6 UPTO 30	± 0.2
OVER 30 UPTO 100	± 0.3
OVER 100 UPTO 300	± 0.5
OVER 300	± 0.8

TEST No.	PROCESS No.
200	---
DRAWN	AER
DATE	5/5/05
CHECKED	5/5/05 EJ
APPROVED	5/5/05 HD
SCALE	1:4

1	DCR			DRN	5/5/05	AER	2	DCR			DRN	12/1/11	AER
	CHK	5/5/05	EJ	APP	5/5/05	HD		CHK	12/1/11	AER	APP	12/1/11	AER
DRAWING INTRODUCED.							DRAWING UPDATED.						

6.6kV HALF COUPLER - 66MK1A

Victor

Victor Products Limited
Unit 3A, Tyne Dock East Side,
Port of Tyne, South Shields,
Tyne and Wear, NE33 5SQ,
United Kingdom.

DRAWING No.	ISSUE No.
SHEET 1 OF 1	
CP293	2