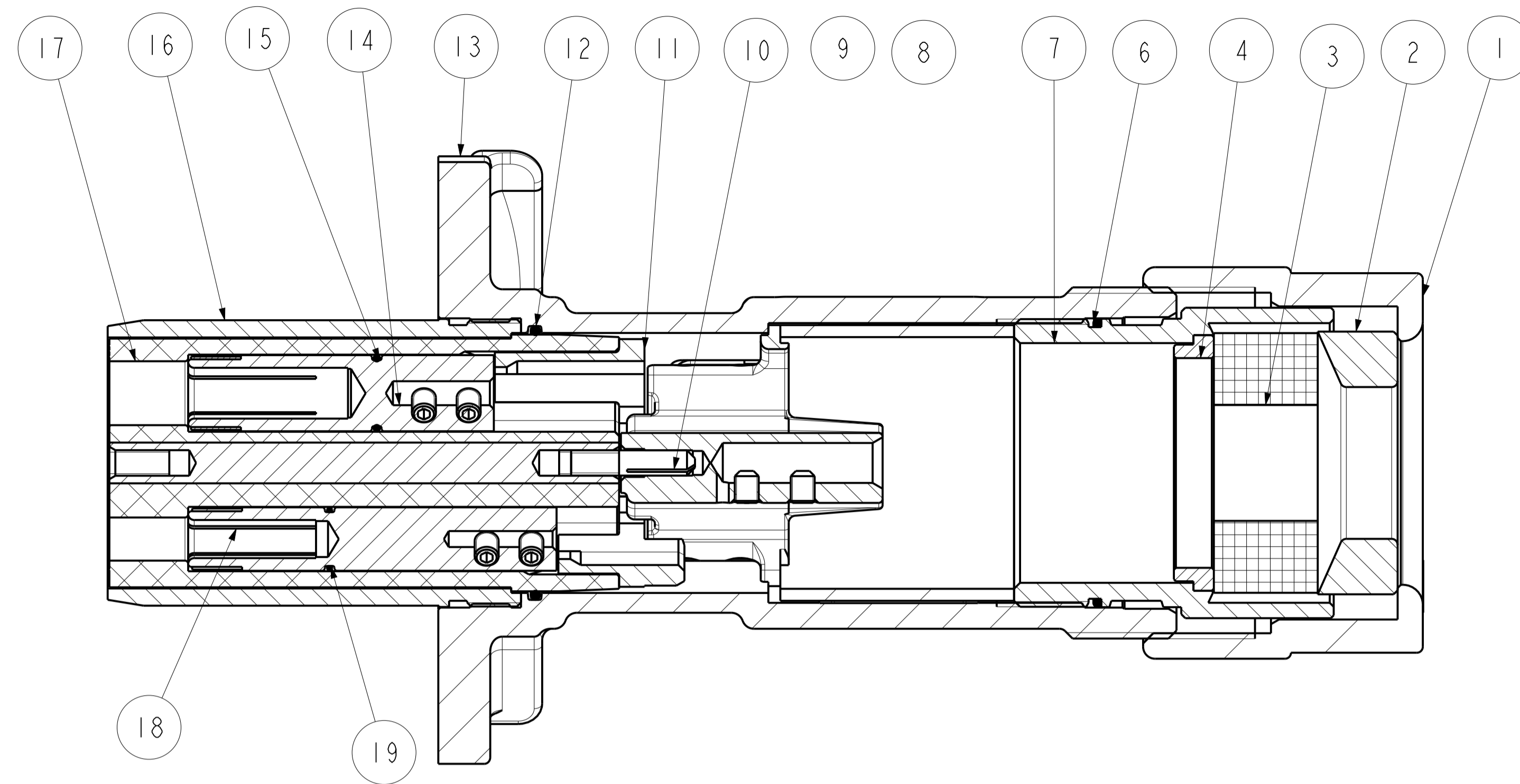


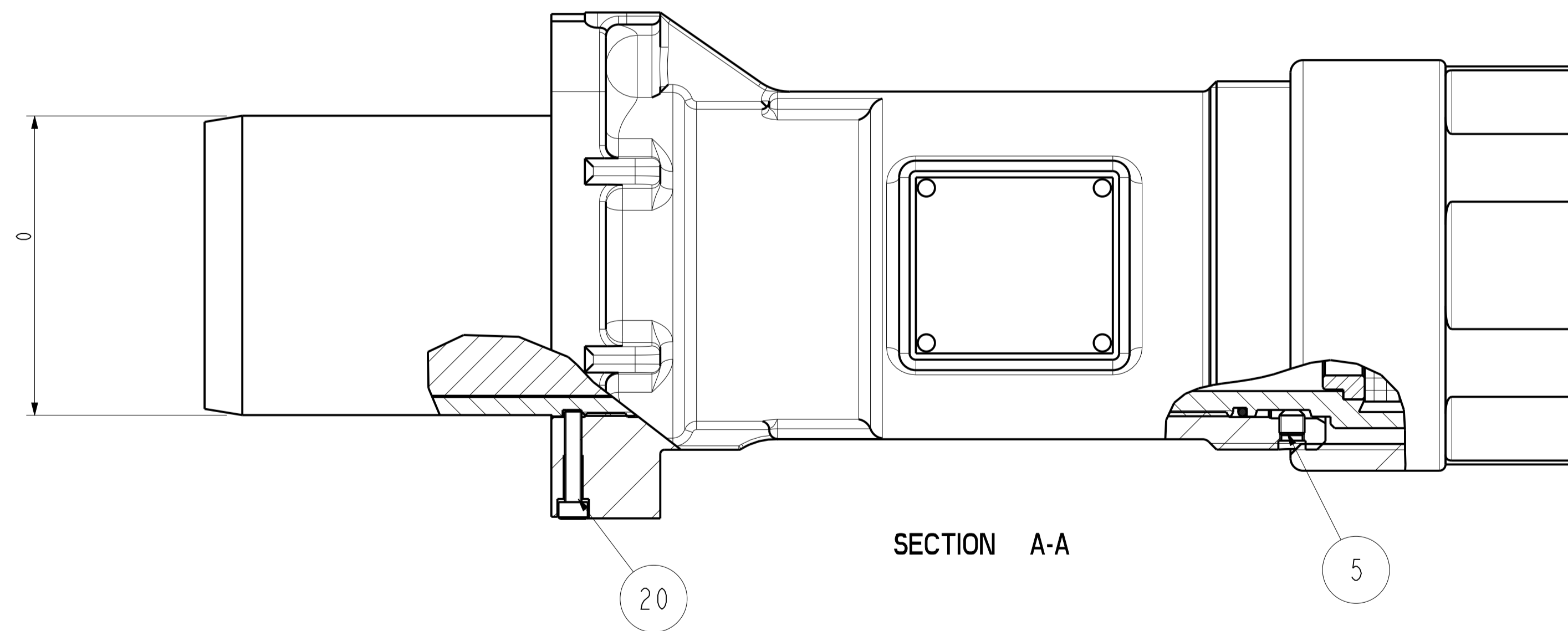
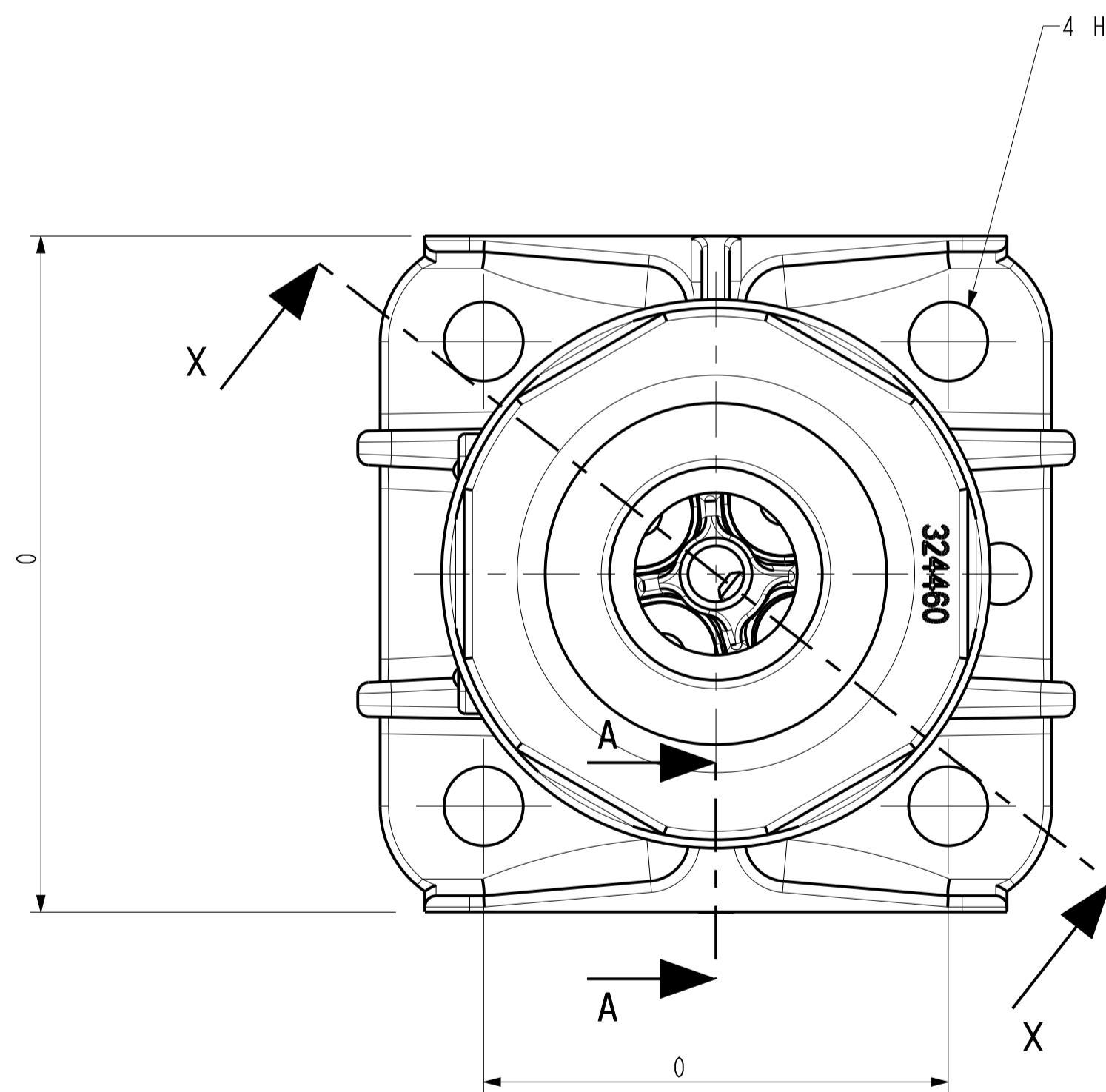
REF. No.	ITEM No.	DESCRIPTION	No. OFF	MAINS CONTACT TUBES.		
				ITEM No.	CABLE mm2	TYPE
1	124460	GLAND NUT	1	924593A	50	CRIMP
2	124459*	CLAMP WASHER	1	924593B	70	CRIMP
3	124423E	SEALING WASHER - 60/52	1	924593C	16	CRIMP
	124423F	SEALING WASHER - 52/43		924593D	35	CRIMP
	124423G	SEALING WASHER - 43/35		924480C	PILOT	GRUBSCREW
	124423H	SEALING WASHER - 35/26		924480G	50	GRUBSCREW
4	124458*	CLAMP INSERT	1	924480H	70	GRUBSCREW
5	228030S	GRUBSCREW	1	924480J	25	GRUBSCREW
6	123412	'O' RING	1	924480K	35	GRUBSCREW
7	124457	CABLE CLAMP BODY	1	924480L	10	GRUBSCREW
8	123403B	SPACER TUBE - LONG	1	924480M	16	GRUBSCREW
	123403A	SPACER TUBE - SHORT PWA ONLY				
9	923405	EARTH SCREEN CLAMP ASSEMBLY	1			
10	123109	EARTH PIN	1			
11	123106A	INSULATOR CAP	1			
12	123474	'O' RING	1	ITEM No.	CABLE mm2	TYPE
13	924981	BOLTED PLUG BODY	1	924594A	25	CRIMP
14	923480-	MAINS CONTACT TUBE - GRUB	3	924594B	35	CRIMP
	924593-	MAINS CONTACT TUBE - CRIMP	3	924594C	50	CRIMP
				924594D	16	CRIMP
15	123475	'O' RING	3	923479	PILOT	GRUBSCREW
16	123406	PLUG BARREL	1	923479G	25	GRUBSCREW
17	923411	INSULATOR	1	923479H	35	GRUBSCREW
18	923479-	PILOT CONTACT TUBE - GRUB	1	923479K	16	GRUBSCREW
	924594-	PILOT CONTACT TUBE - CRIMP	1	923479L	10	GRUBSCREW
19	123476	'O' RING	1			
20	218209X	SOCKET CAP SCREW	1			
22	123402	ARMOUR CLAMP	1			

NOTE: FOR CLAMP WASHER AND CLAMP INSERT, PLEASE STATE MAXIMUM OUTSIDE DIAMETER OF CABLE.



SECTION X-X

STYLE No. 002719- FOR SCREENED CABLES.
 STYLE No. 002720- FOR PWA SCREENED CABLES.



SECTION A-A

CERTIFICATE RELATED DRAWING
 NO MODIFICATIONS PERMITTED WITHOUT THE APPROVAL OF THE TECHNICAL MANAGER

DO NOT SCALE

DIMENSIONS IN MILLIMETRES (mm)
 MAXIMUM MACHINED SURFACE
 TEXTURE um Ra 3.2
 MACHINE WHERE MARKED THUS ✓
 ANGULAR TOLERANCES ±1/2°
 DIMENSIONAL TOLERANCES UNLESS OTHERWISE STATED
 UPTO 6 ±0.1
 OVER 6 UPTO 30 ±0.2
 OVER 30 UPTO 100 ±0.3
 OVER 100 UPTO 300 ±0.5
 OVER 300 ±0.8

TEST No.	PROCESS No.
200	---
DRAWN	AER
DATE	25/1/07
CHECKED	25/1/07 AER
APPROVED	25/1/07 AER
SCALE	1:1

DCR DRN 23/1/07 AER
 CHK 23/1/07 AER APP 23/1/07 AER
 DRAWING INTRODUCED.

DETAILS AND SPARES FOR
 TYPE A41PB BOLTED PLUG.

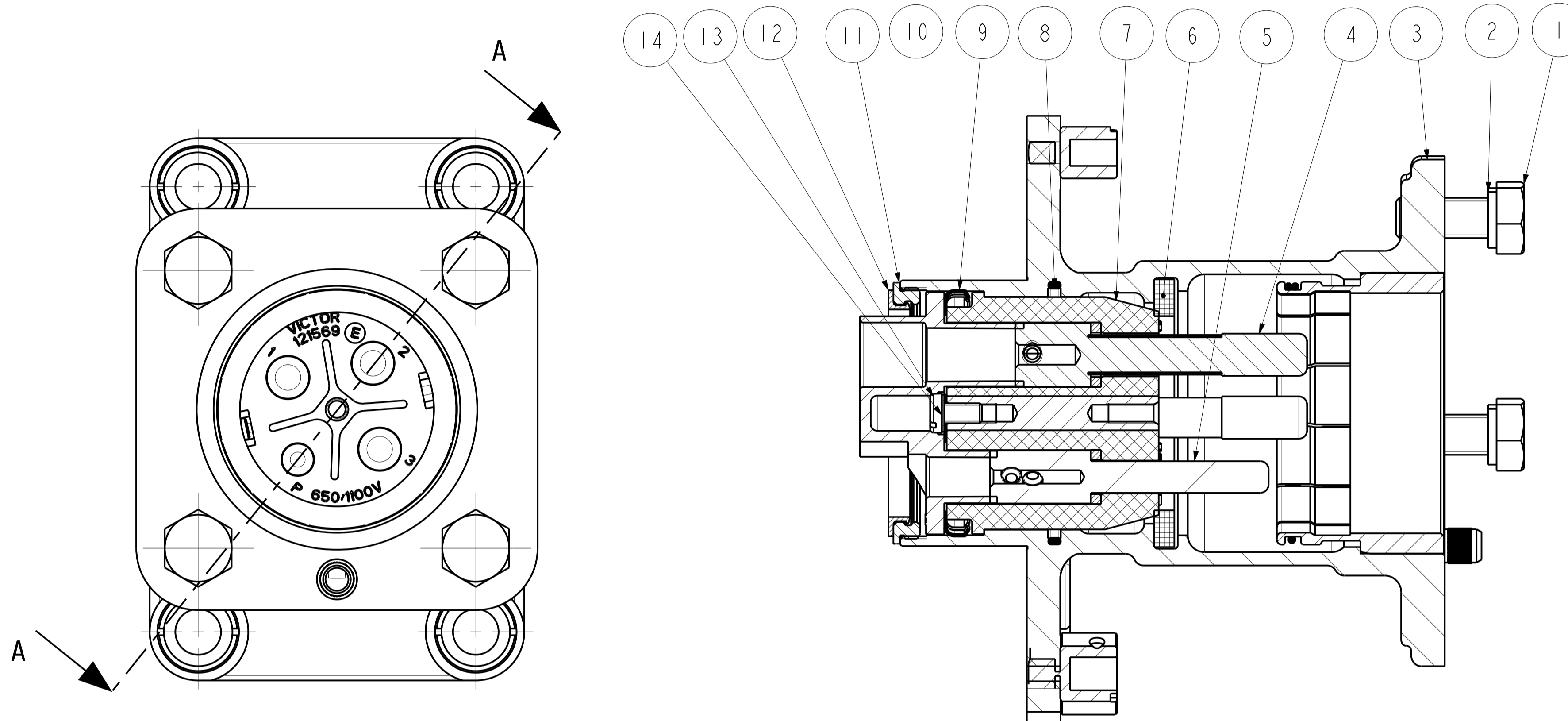
Victor

Victor Products Limited
 Unit 3A, Tyne Dock East Side,
 Port of Tyne, South Shields,
 Tyne and Wear, NE33 5SQ,
 United Kingdom.

DRAWING No.
 SHEET 1 OF 2
 CP272
 ISSUE No.
 0

REF. No.	ITEM No.	DESCRIPTION	No. OFF
1	215066P	HEX. HEAD SCREW	4
2	256017S	SPRING WASHER	4
3	924857	SOCKET BODY ASSEMBLY	1
4	923614	MAINS CONTACT PIN - CRIMP - 50mm ²	3
	923614A	MAINS CONTACT PIN - CRIMP - 70mm ²	3
	923614C	MAINS CONTACT PIN - CRIMP - 35mm ²	3
	921577A	MAINS CONTACT PIN - GRUBSCREW - 70mm ²	3
	921577B	MAINS CONTACT PIN - GRUBSCREW - 50mm ²	3
	921577C	MAINS CONTACT PIN - GRUBSCREW - 25mm ²	3
	921577M	MAINS CONTACT PIN - GRUBSCREW - 16mm ²	3
5	921335	PILOT CONTACT PIN - CRIMPED - 6mm ²	1
	921111M	PILOT CONTACT PIN - GRUBSCREW 6mm ²	1
6	123229	GASKET	1
7	121569E	INSULATOR	1
8	123730	'O' RING	1
9	121570	EARTH DISC	1
10	123222	RETAINING RING	1
11	124386	INSULATING RING	1
12	124385	INSULATOR CAP	1
13	216031D	EARTH DISC RETAINING SCREW	1
14	257076	SPRING WASHER	1

CERTIFICATE RELATED DRAWING
NO MODIFICATIONS PERMITTED WITHOUT THE APPROVAL OF THE TECHNICAL MANAGER



SECTION A-A

DO NOT SCALE	
DIMENSIONS IN MILLIMETRES (mm)	
MAXIMUM MACHINED SURFACE	
TEXTURE $\mu\text{m Ra}$ 3.2	
MACHINE WHERE MARKED THUS ✓	
ANGULAR TOLERANCES $\pm 1/2^\circ$	
DIMENSIONAL TOLERANCES UNLESS OTHERWISE STATED	
UPTO 6	± 0.1
OVER 6 UPTO 30	± 0.2
OVER 30 UPTO 100	± 0.3
OVER 100 UPTO 300	± 0.5
OVER 300	± 0.8
TEST No.	PROCESS No.
200	---
DRAWN	AER
DATE	29/11/07
CHECKED	29/11/07 AER
APPROVED	29/11/07 AER
SCALE	1:1

DCR DRN 29/11/07 AER
CHK 29/11/07 AER APP 29/11/07 AER
DRAWING INTRODUCED.

DETAILS AND SPARES FOR TYPE A41SB BOLTED SOCKET.

Victor Victor Products Limited
Unit 3A, Tyne Dock East Side,
Port of Tyne, South Shields,
Tyne and Wear, NE33 5SQ,
United Kingdom.

DRAWING No. SHEET 2 OF 2
CP272

ISSUE No. 0