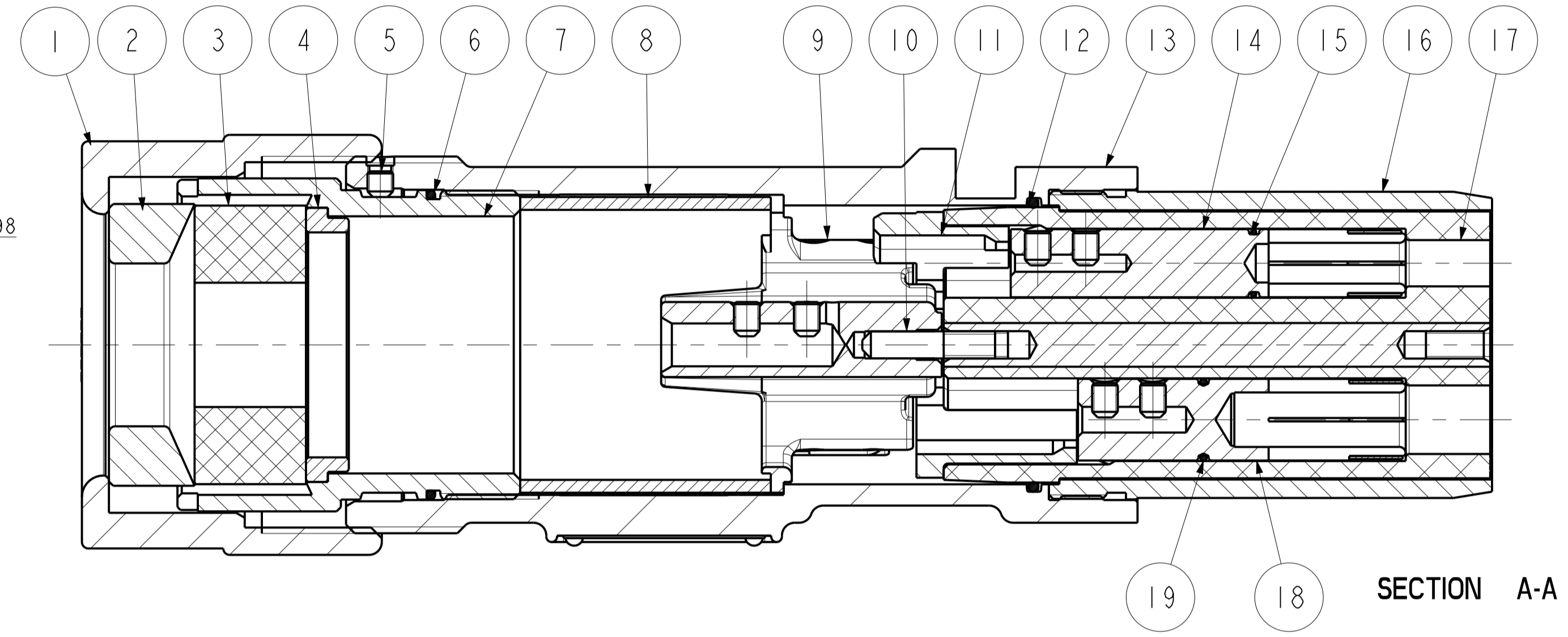
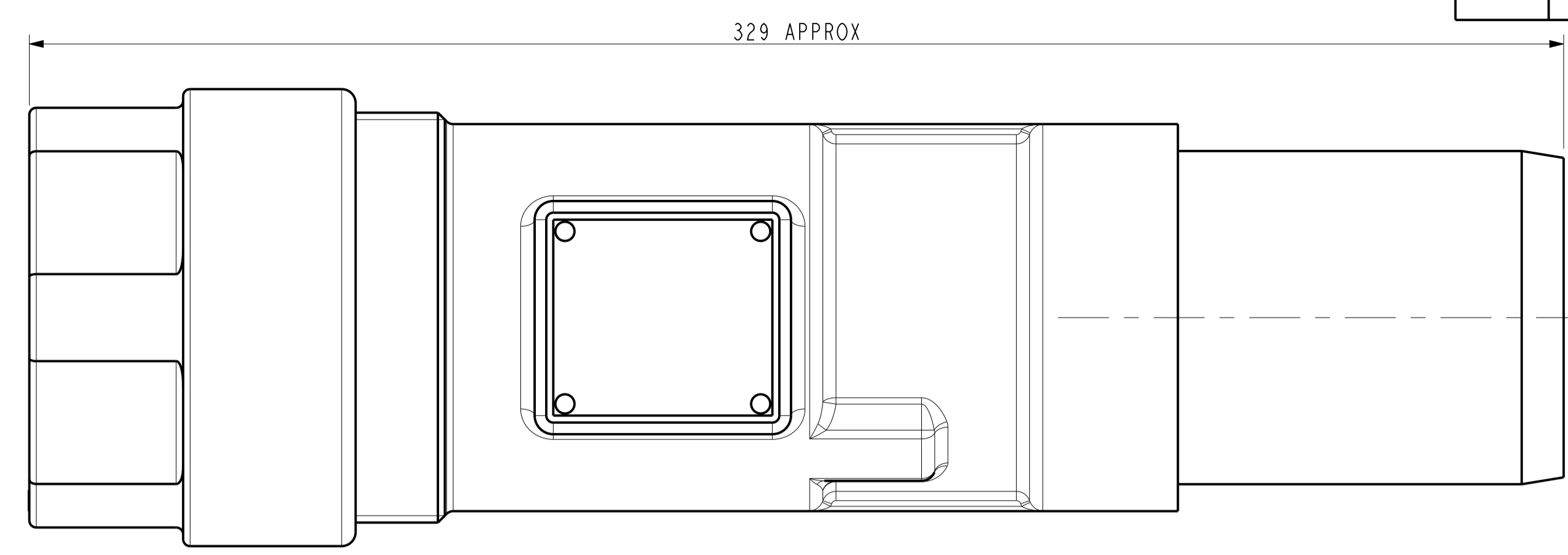
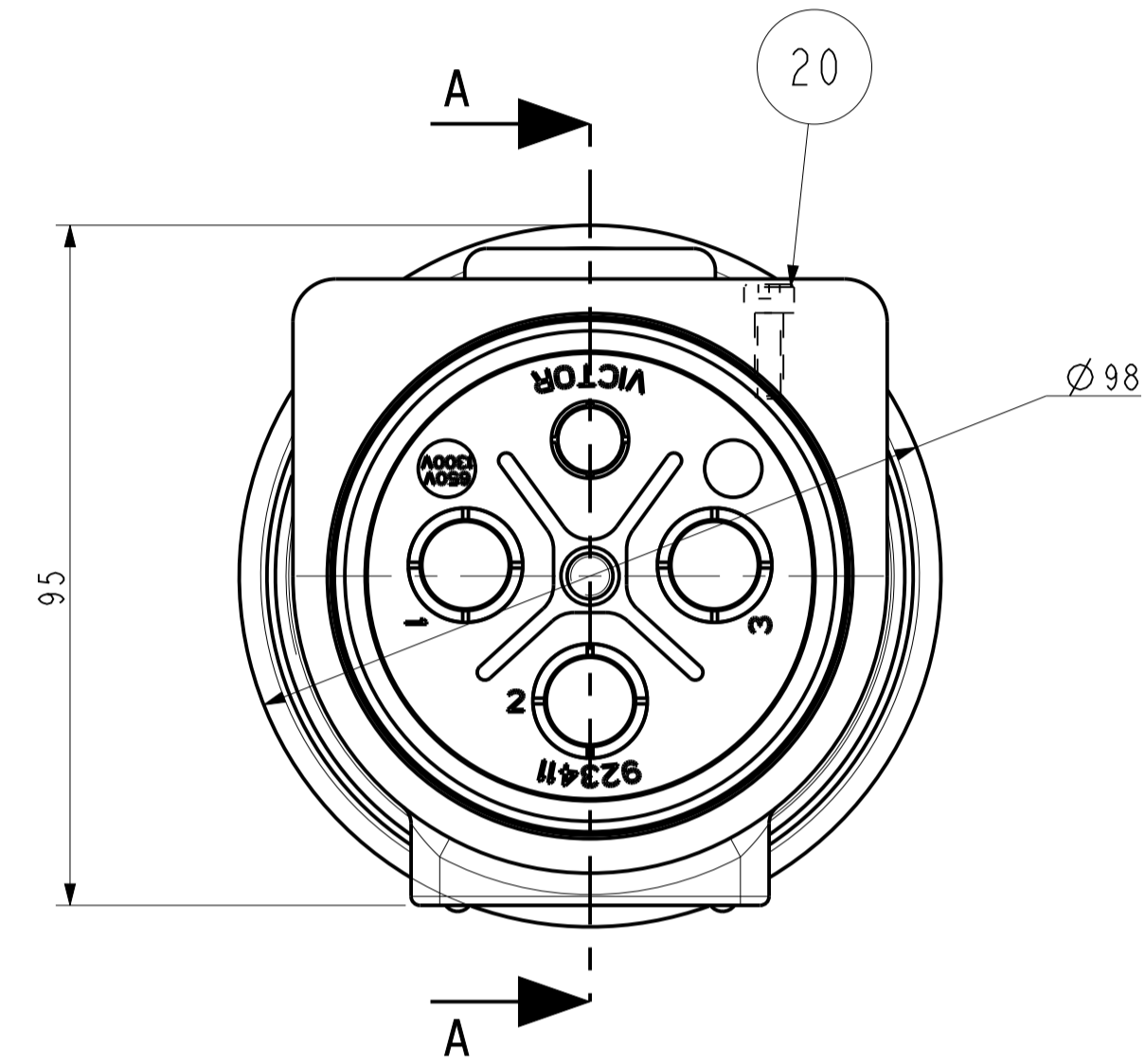


REF	ITEM NO.	DESCRIPTION	QTY
A	1	124460 GLAND NUT	1
	2	CLAMP WASHER SEE VARIANT TABLE	1
	3	CLAMPING RING SEE VARIANT TABLE	1
	4	CLAMP INSERT SEE VARIANT TABLE	1
	5	228030S GRUBSCREW - M6 FLATPOINT	2
	6	123412 O RING - 67.6 ID	1
B	7	124457 CABLE CLAMP	1
	8	SPACER TUBE SEE VARIANT TABLE	1
	9	923405 EARTH AND SCREEN CLAMP ASSEMBLY	1
	10	123109 EARTH PIN	1
	11	123106A INSULATOR CAP	1
	12	123474 O RING - 64.6 ID	1
	13	924845 PLUG BODY ASSEMBLY	1
	14	PILOT CONTACT TUBE SEE VARIANT TABLE	1
	15	123476 O RING - 13.1 ID	1
C	16	123406 PLUG BARREL	1
	17	923411 PLUG INSULATOR	1
	18	MAINS CONTACT TUBE SEE VARIANT TABLE	3
	19	123475 O RING - 16.1 ID	3
	20	218021X SOCKET HEAD CAP SCREW - M4 X 12 LONG	1
	21	124835 INSTALLATION LEAFLET	1
	22	480521 CARTON	1



STYLE VARIANT TABLE

STYLE NO.	DESCRIPTION	CABLE DIA	TYPE	CONTACT TUBE TYPE	CLAMP WASHER	CLAMPING RING	CLAMP INSERT	SPACER TUBE	PILOT CONTACT TUBE	MAINS CONTACT TUBE	ARMOUR CLAMP SEAT
A002703E	FOR SCREENED CABLE UP TO 70mm <sup>2</sup>	60/35	A41PR	GRUBSCREWED	124459D	124423E 124423F 124423G	124458D	123403B	923479	923480C	NOT REQD.
MCA002703AE	FOR SCREENED CABLE TYPE 7 - 35mm <sup>2</sup>	46.3-43.1	A41PR	GRUBSCREWED	124459B	124423F	124458B	123403B	923479K	923480K	NOT REQD.
MCA002703CE	FOR SCREENED CABLE TYPE 7 - 50mm <sup>2</sup>	52-48	A41PR	GRUBSCREWED	124459A	124423F	124458A	123403B	923479G	923480G	NOT REQD.
MCA002703DE	FOR SCREENED CABLE TYPE 7 - 70mm <sup>2</sup>	59-55	A41PR	GRUBSCREWED	124459F	124423E	NOT REQD.	123403B	923479H	923480H	NOT REQD.
MCA002703EE	FOR SCREENED CABLE TYPE 11 - 16mm <sup>2</sup>	33.0-30.9	A41PR	GRUBSCREWED	124459G	124423H	124458F	123403B	923479K	923480M	NOT REQD.
MCA002703GE	FOR SCREENED CABLE TYPE 7 - 16mm <sup>2</sup>	39 NOM.	A41PR	GRUBSCREWED	124459D	124423G	124458D	123403B	923479	923480M	NOT REQD.
MCA002703HE	FOR SCREENED CABLE TYPE 7 - 16mm <sup>2</sup>	29 NOM.	A41PR	GRUBSCREWED	124459E	124423H	124458E	123403B	923479K	923480M	NOT REQD.
MCA002703JE	FOR SCREENED CABLE TYPE 7 - 35mm <sup>2</sup>	39 NOM.	A41PR	GRUBSCREWED	124459D	124423G	124458D	123403B	923479K	923480K	NOT REQD.
MCA002703KE	FOR SCREENED CABLE TYPE 7 - 25mm <sup>2</sup>	33.5 NOM.	A41PR	GRUBSCREWED	124459G	124423H	124458F	123403B	923479K	923480J	NOT REQD.
MCA002703LE	FOR SCREENED CABLE TYPE 7 - 70mm <sup>2</sup>	47 NOM.	A41PR	GRUBSCREWED	124459B	124423F	124458B	123403B	923479K	923480H	NOT REQD.
MCA002703XE	FOR SCREENED CABLE - SPECIAL FOR 'SAIT'	47 NOM.	A41PR	GRUBSCREWED	124459B	124423F	124458B	123403B	923479G	923480G	NOT REQD.
MCA002703AEC	FOR SCREENED CABLE TYPE 7 - 35mm <sup>2</sup>	47 NOM.	A41PR	CRIMPED	124459B	124423F	124458B	123403B	924594D	924593D	NOT REQD.
MCA002703BEC	FOR SCREENED CABLE TYPE 7 - 25mm <sup>2</sup>	43 NOM.	A41PR	CRIMPED	124459C	124423G	124458C	123403B	924594D	924593E	NOT REQD.
MCA002703CEC	FOR SCREENED CABLE TYPE 7 - 50mm <sup>2</sup>	52.5 NOM.	A41PR	CRIMPED	124459A	124423F	124458A	123403B	924594A	924593A	NOT REQD.
MCA002703DEC	FOR SCREENED CABLE TYPE 7 - 70mm <sup>2</sup>	59 NOM.	A41PR	CRIMPED	124459F	124423E	NOT REQD.	123403B	924594B	924593B	NOT REQD.
MCA002703FEC	FOR SCREENED CABLE TYPE 7M - 50mm <sup>2</sup>	52.5 NOM.	A41PR	CRIMPED	124459A	124423F	124458A	123403B	924594C	924593A	NOT REQD.
MCA002703GEC	FOR SCREENED CABLE TYPE 7 - 16mm <sup>2</sup>	39 NOM.	A41PR	CRIMPED	124459D	124423G	124458D	123403B	924594C	924593A	NOT REQD.
MCA002703MEC	FOR SCREENED CABLE TYPE 7M - 70mm <sup>2</sup>	59 NOM.	A41PR	CRIMPED	124459F	124423E	NOT REQD.	123403B	924594E	924593B	NOT REQD.
MCA002704AE	FOR SCREENED & PWA CABLE TYPE 211 - 10mm <sup>2</sup>	42.3-39.8	A41PR/A	GRUBSCREWED	124459C	124423G	124458C	123403A	923479L	923480L	123401B
MCA002704BE	FOR SCREENED & PWA CABLE TYPE 211 - 25mm <sup>2</sup>	51.3 MAX	A41PR/A	GRUBSCREWED	124459A	124423F	124458A	123403A	923479K	923480J	123401A
MCA002704DE	FOR SCREENED & PWA CABLE TYPE 64 - 4mm <sup>2</sup>	29 NOM.	A41PR/A	GRUBSCREWED	124459E	124423H	124458E	123403A	923479L	923480L	123401B

TYPICAL ARRANGEMENT OF STYLE No. MCA002703 AND VARIANTS

DO NOT SCALE

DIMENSIONS IN MILLIMETRES (mm)  
 MAXIMUM MACHINED SURFACE  
 TEXTURE  $\mu m Ra 3.2$   
 MACHINE WHERE MARKED THUS ✓  
 ANGULAR TOLERANCES  $\pm 1/2^\circ$   
 DIMENSIONAL TOLERANCES UNLESS OTHERWISE STATED  
 UPTO 6  $\pm 0.1$   
 OVER 6 UPTO 30  $\pm 0.2$   
 OVER 30 UPTO 100  $\pm 0.3$   
 OVER 100 UPTO 300  $\pm 0.5$   
 OVER 300  $\pm 0.8$

TEST No.	PROCESS No.
---	---
DRAWN	AER
DATE	24/1/06
CHECKED	24/1/06 AER
APPROVED	24/1/06 AER
SCALE	1:1

DCR | DRN | 24/1/06 | AER  
 CHK | 24/1/06 | AER | APP | 24/1/06 | AER  
 DRAWING INTRODUCED.

TYPE A41PR & A41PR/A DUAL VOLTAGE  
 RESTRAINED PLUG ASSEMBLIES - 650/1300V 250A



Victor Products Limited  
 Unit 3A, Tyne Dock East Side,  
 Port of Tyne, South Shields,  
 Tyne and Wear, NE33 5SQ,  
 United Kingdom.

DRAWING No.  
 SHEET 1 OF 1  
 CP273  
 ISSUE No.  
 0