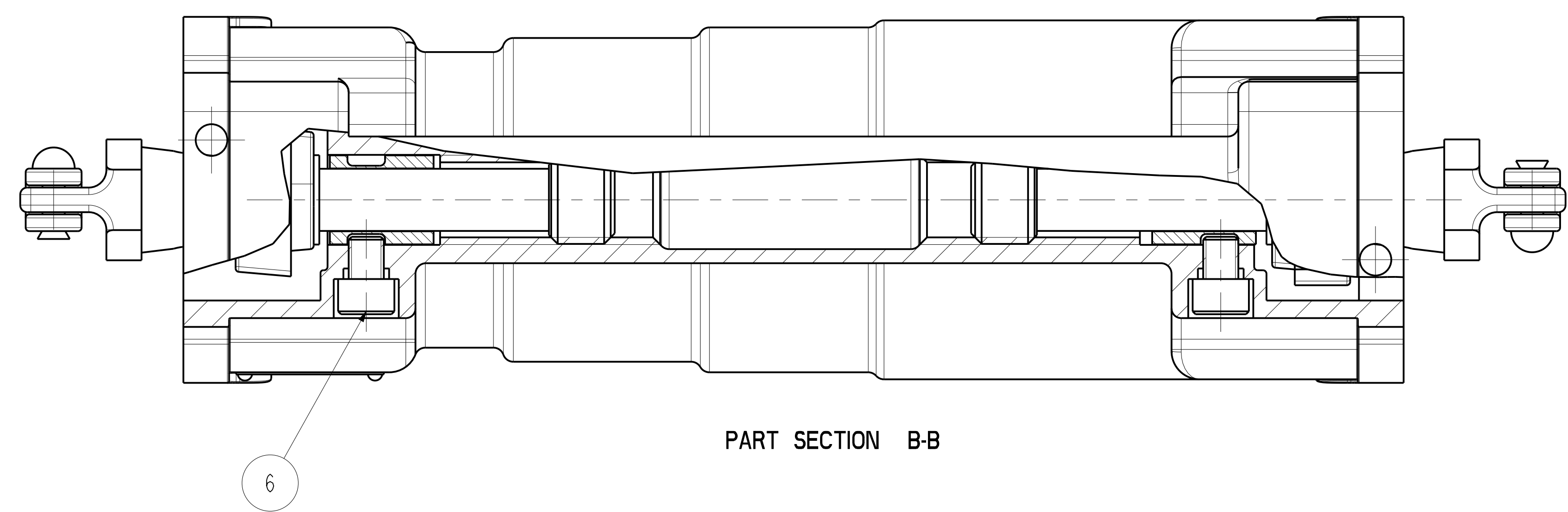
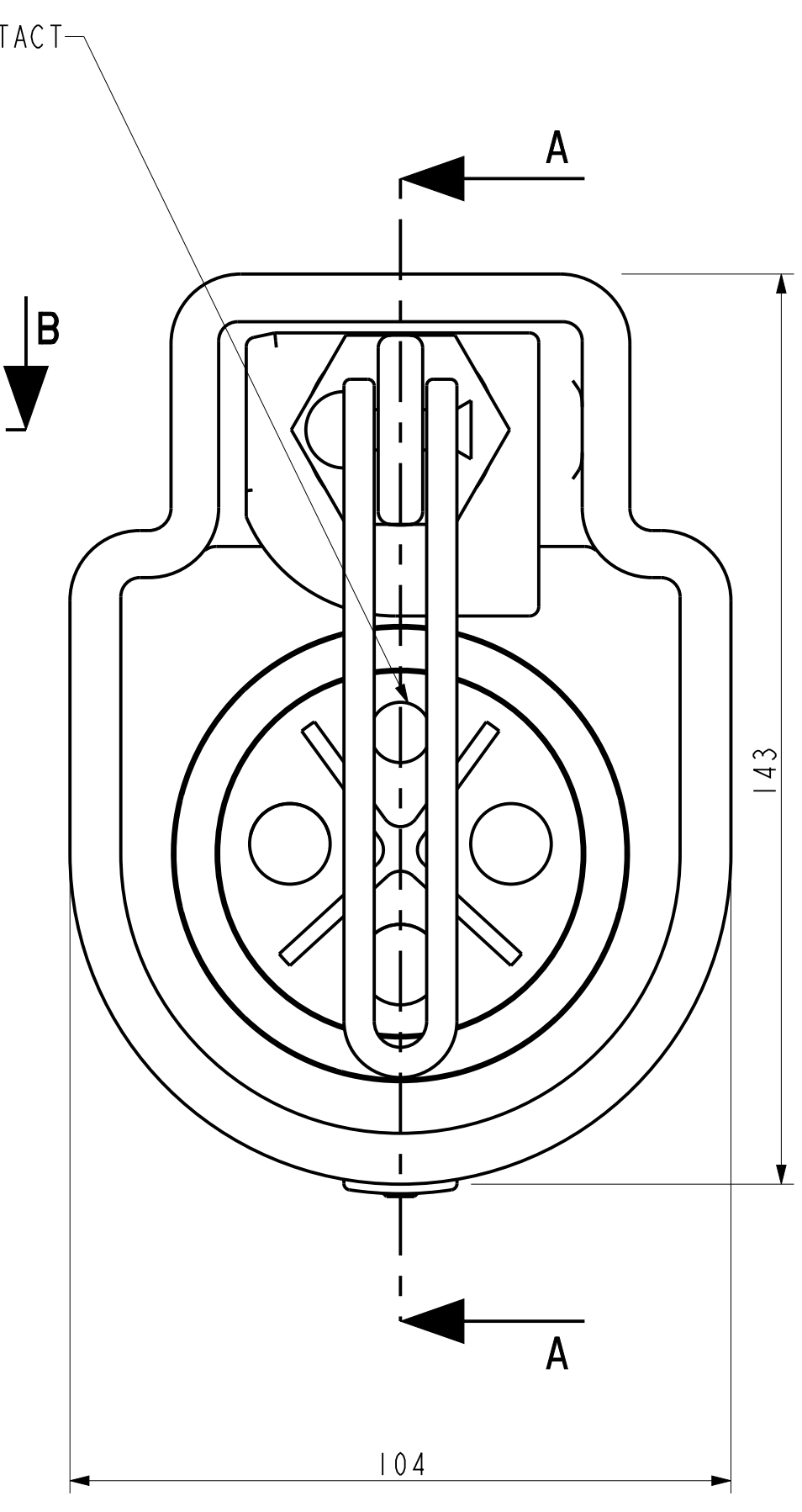
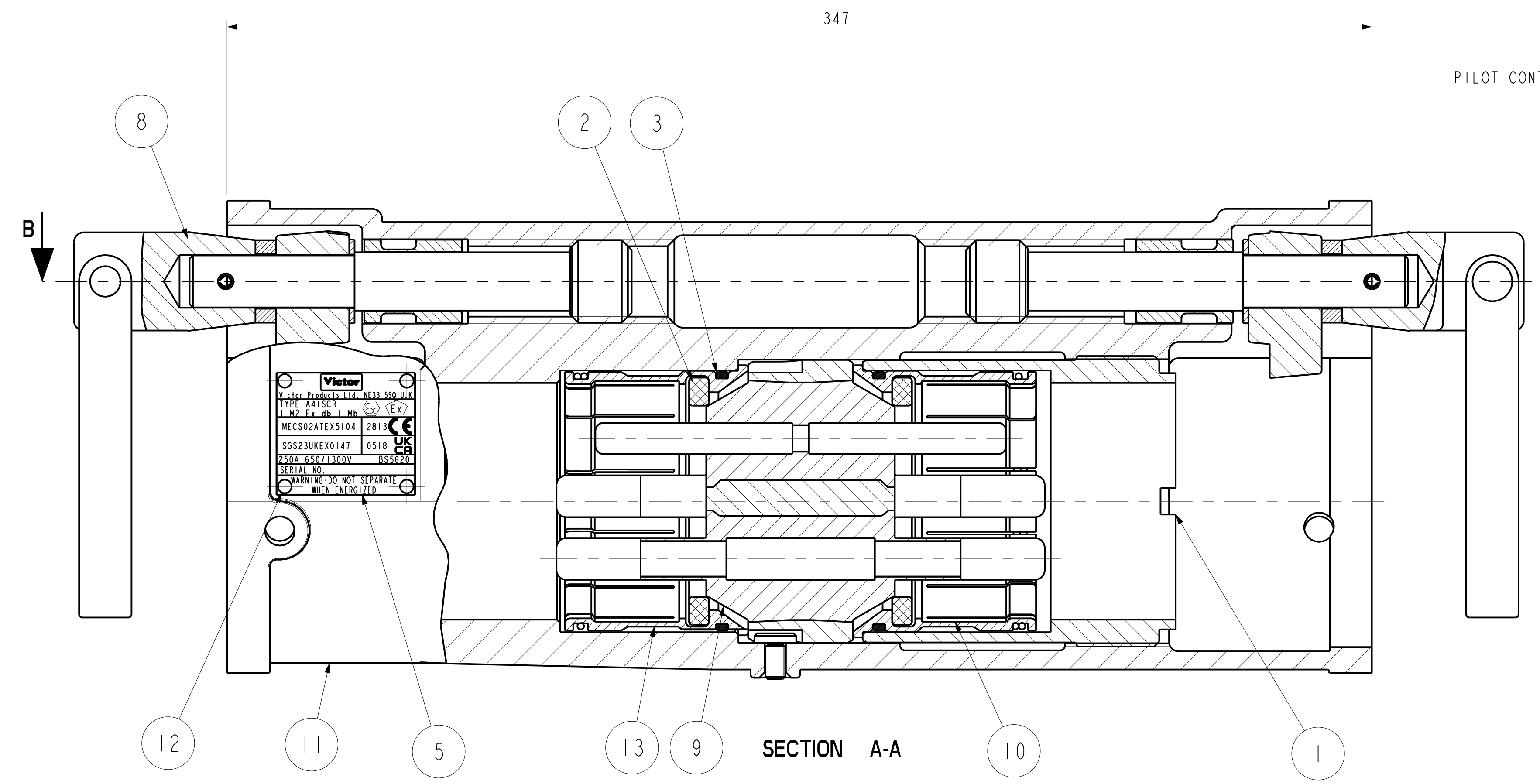


REF	ITEM NO.	DESCRIPTION	QTY	
A	1	121189	RETAINING SLEEVE	1
	2	123428	GASKET	2
	3	123730	O RING	2
	4	124837	INSTALLATION LEAFLET	1
	5	124940	NAMEPLATE - TYPE A41SCR	1
	6	218202	SOCKET HEAD CAP SCREW - M10 X 12 LONG	2
	7	480538	CARTON	1
B	8	921233	WITHDRAWAL SPINDLE ASSEMBLY	2
	9	921580	SCREENED INSULATOR	1
	10	923427	EARTH SPRING CONTACT	1
	11	924897	COUPLER BODY TYPE A41	1
	12	224056S	HAMMER DRIVE SCREW - NO.2 X 3/16	4
	13	923427A	EARTH SPRING CONTACT	1

CERTIFICATE RELATED DRAWING
NO MODIFICATIONS PERMITTED WITHOUT THE APPROVAL OF THE TECHNICAL MANAGER



DO NOT SCALE

DIMENSIONS IN MILLIMETRES (mm)
MAXIMUM MACHINED SURFACE
TEXTURE $\mu\text{m Ra}$ 3.2
MACHINE WHERE MARKED THUS ✓
ANGULAR TOLERANCES $\pm 1/2^\circ$
DIMENSIONAL TOLERANCES UNLESS OTHERWISE STATED
UPTO 6 ± 0.1
OVER 6 UPTO 30 ± 0.2
OVER 30 UPTO 100 ± 0.3
OVER 100 UPTO 300 ± 0.5
OVER 300 ± 0.8

TEST No.	PROCESS No.
---	---
DRAWN	HD
DATE	26/09/23
CHECKED	26/09/23 HD
APPROVED	26/09/23 HD
SCALE	1:1

STYLE NO. MCA002713

DCR DRN 26/09/23 HD
CHK 26/09/23 HD APP 26/09/23 HD
DRAWING INTRODUCED.

TYPE A41SCR DUAL VOLTAGE RESTRAINED
COUPLER 650/1300V 250A



Victor Products Limited
Unit 3A, Tyne Dock East Side,
Port of Tyne, South Shields,
Tyne and Wear, NE33 55Q,
United Kingdom.

DRAWING No.
SHEET 1 OF 1
CP303
ISSUE No.
0