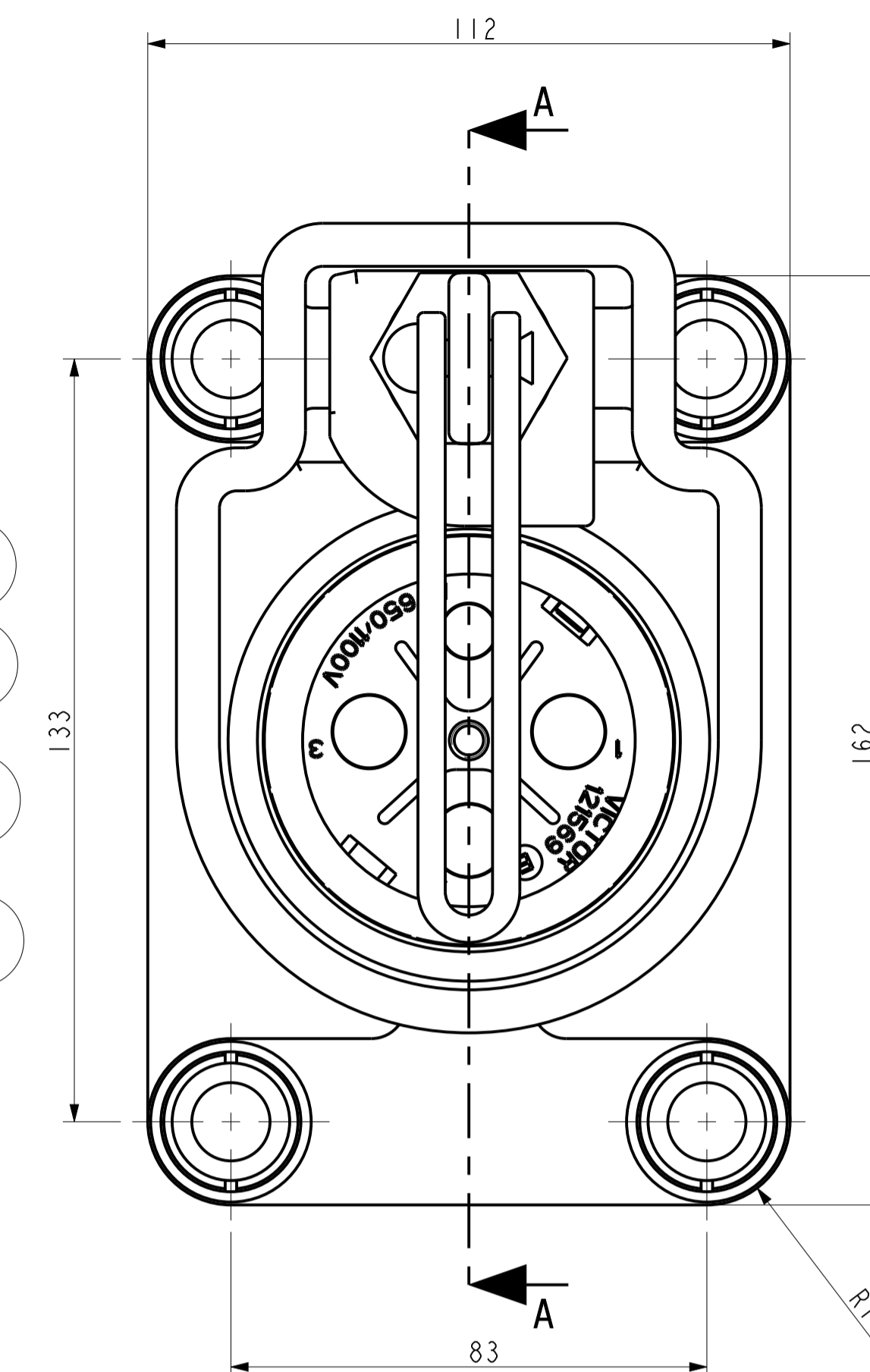
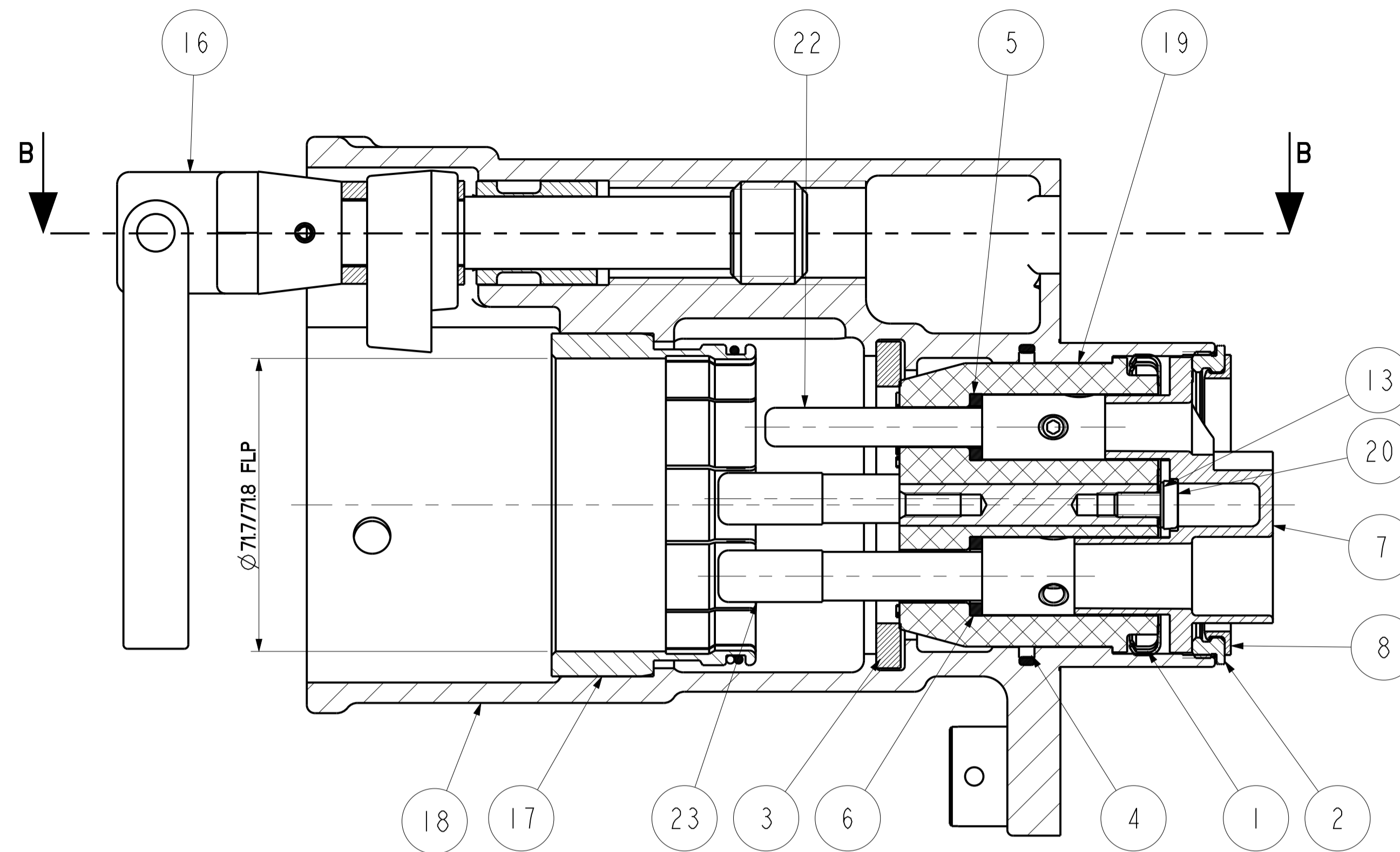
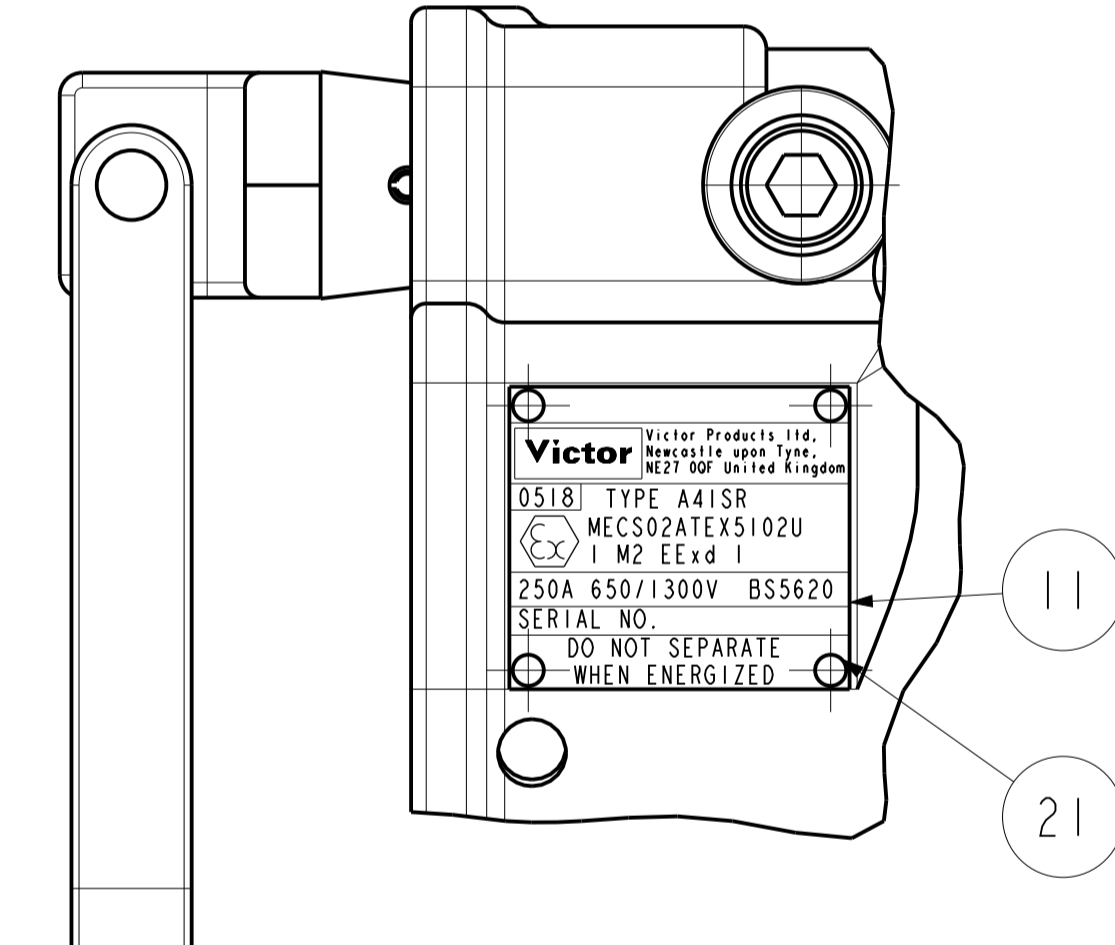
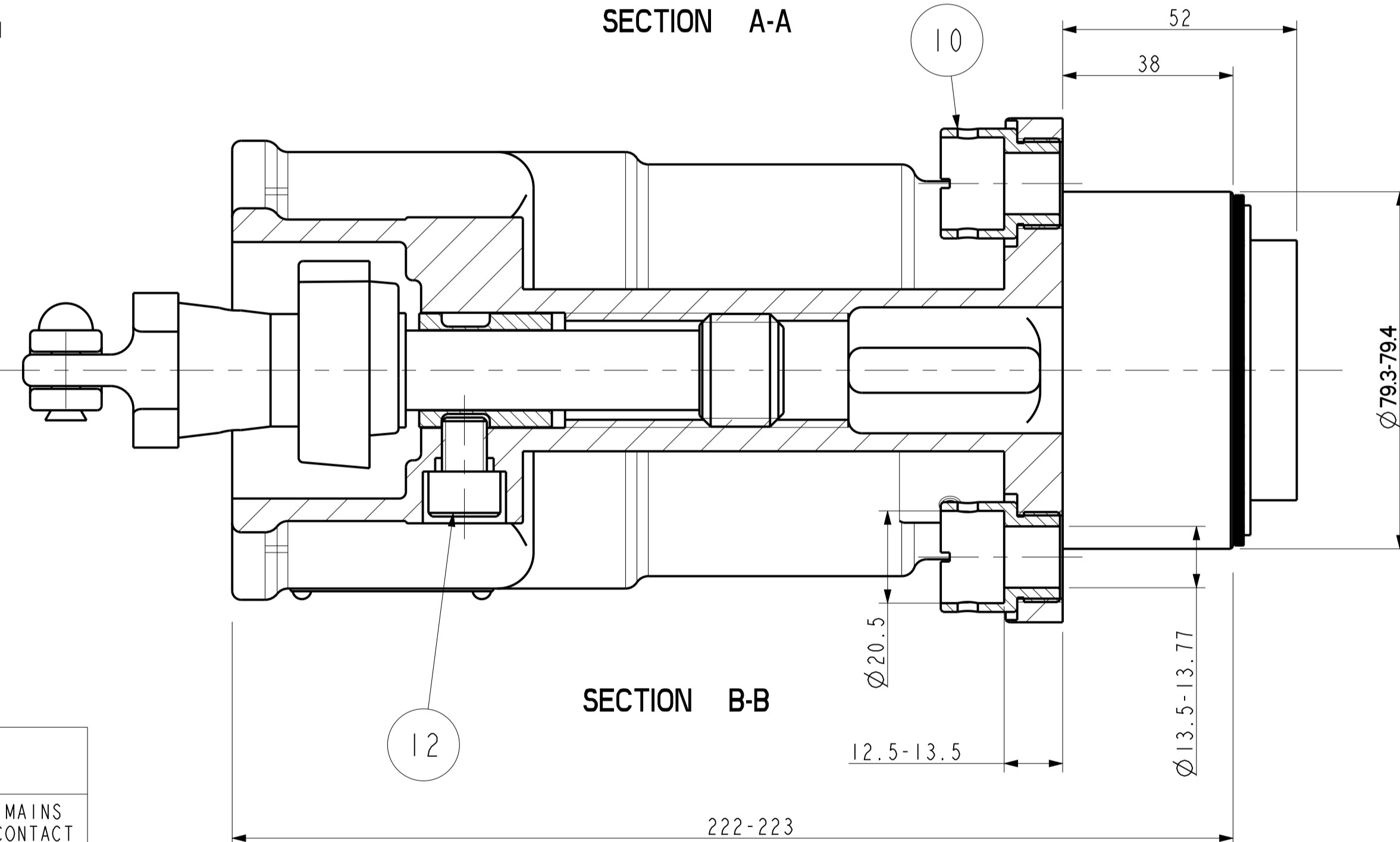
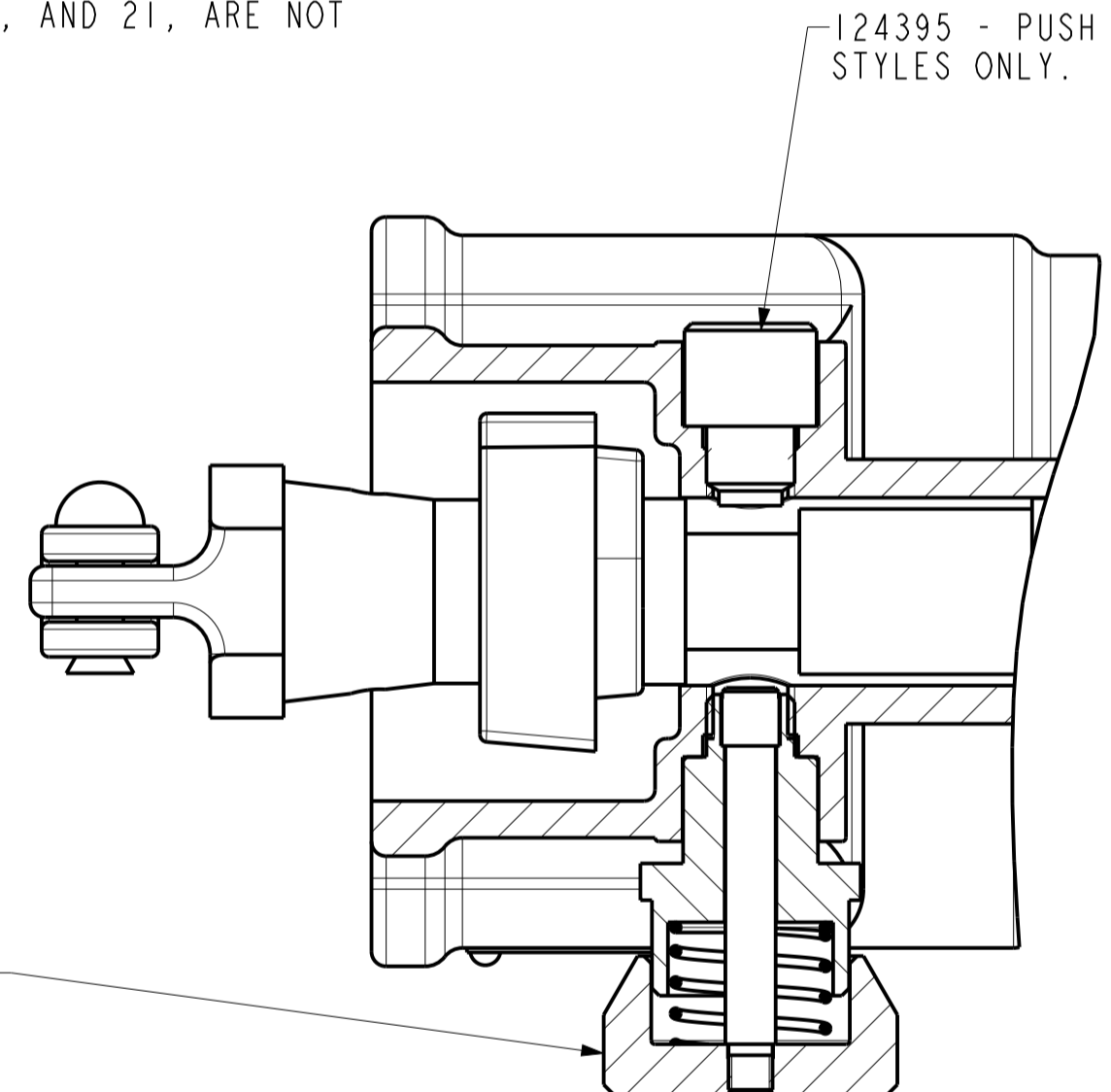


REF	ITEM NO.	DESCRIPTION	QTY
A	1	121570 EARTH DISC	1
	2	123222 RETAINING RING	1
	3	123229 GASKET - SEE NOTE	1
	4	123730 O RING - SEE NOTE	1
	5	124375 CONTACT PIN SEAL	1
	6	124376 CONTACT PIN SEAL	3
	7	124385 INSULATOR CAP	1
B	8	124386 INSULATING RING	1
	9		
	10	124863 SHROUD FOR EN SOCKETS - SEE NOTE	4
	11	124938 NAMEPLATE - TYPE A41SR - SEE NOTE	1
	12	218202 SOCKET HEAD CAP SCREW - M10 X 12 LONG	1
	13	257076 LOCKWASHER - 6 I/D	1
	14		
	15		
C	16	WITHDRAWAL SPINDLE WITHDRAWAL SPINDLE ASSEMBLY - SEE VARIANT TABLE	1
	17	923228 EARTH SCRAPER - SEE NOTE	1
	18	SOCKET BODY ASSY. TYPE A41 SOCKET BODY - SEE NOTE	1
	19	121569E SOCKET INSULATOR	1
	20	216031D SCREW - M6 X 12 CHEESE HEAD	1
	21	224056S HAMMER DRIVE SCREW - NO.2 X 3/16 - SEE NOTE	4
D	22	PILOT CONTACT PIN PILOT CONTACT PIN ASSEMBLY - SEE VARIANT TABLE	1
	23	MAINS CONTACT PIN MAINS CONTACT PIN ASSEMBLY - SEE VARIANT TABLE	3

NOTE - PARTS REF. 3, 4, 10, 11, 17, AND 21, ARE SUPPLIED FITTED TO SOCKET BODY REF. 18. PARTS REF. 10, 11, 17, AND 21, ARE NOT SUPPLIED SEPARATELY



SECTION B-B SHOWING BUTTON IN R.H. POSITION.



SCRAP VIEW SHOWING NAMEPLATE POSITION SHOWING TYPICAL NAMEPLATE. TYPE No. MAY VARY.

STYLE VARIANT TABLE

STYLE NO.	DESCRIPTION	TYPE	CONTACT PIN TYPE	SOCKET BODY ASSEMBLY	WITHDRAWAL SPINDLE ASSEMBLY	PILOT CONTACT PIN	MAINS CONTACT PIN
002678AE	70mm2 GRUB - STANDARD CAM	A41SR	GRUBSCREWED	924926S	921233	921111M	921577A
002678BE	50mm2 GRUB - STANDARD CAM	A41SR	GRUBSCREWED	924926S	921233	921111M	921577B
002678CE	35mm2 GRUB - STANDARD CAM	A41SR	GRUBSCREWED	924926S	921233	921111M	921577D
002678E	PILOT BORED - STANDARD CAM	A41SR	GRUBSCREWED	924926S	921233	921111M	921577M
002845AE	70mm2 CRIMPED - STANDARD CAM	A41SR	CRIMPED	924926S	921233	921335	923614
002845E	50mm2 CRIMPED - STANDARD CAM	A41SR	CRIMPED	924926S	921233	921335	923614A
002935AE	P/BORED - STANDARD CAM - L.H P.BUTTON	A41SR/C	GRUBSCREWED	925055S	924396	921111M	921577M
002935BE	P/BORED - NON-STANDARD CAM - R.H P.BUTTON	A41SR/G	GRUBSCREWED	925055S	924398	921111M	921577M
002935CE	P/BORED - NON-STANDARD CAM - L.H P.BUTTON	A41SR/G	GRUBSCREWED	925055S	924398	921111M	921577M
002935E	P/BORED - STANDARD CAM - R.H P.BUTTON	A41SR/C	GRUBSCREWED	925055S	924396	921111M	921577M

SEE DRAWING CP270 FOR IPC VARIANTS.

CERTIFICATE RELATED DRAWING
NO MODIFICATIONS PERMITTED WITHOUT THE APPROVAL OF THE TECHNICAL MANAGER

DO NOT SCALE
DIMENSIONS IN MILLIMETRES (mm)
MAXIMUM MACHINED SURFACE TEXTURE um Ra 3.2
MACHINE WHERE MARKED THIS
ANGULAR TOLERANCES ±1/2°
DIMENSIONAL TOLERANCES UNLESS OTHERWISE STATED
UPTO 6 ±0.1
OVER 6 UPTO 30 ±0.2
OVER 30 UPTO 100 ±0.3
OVER 100 UPTO 300 ±0.5
OVER 300 ±0.6

TEST No.	PROCESS No.
---	---
DRAWN	HD
DATE	21/02/03
CHECKED	21/02/03 AER
APPROVED	21/02/03 BT
SCALE	1:1

1	DCR2003069	DRN	21/02/03	HD	2	DCR2010	DRN	4/5/10	AER
	CHK	21/02/03	AER	APP	21/02/03	BT	CHK	4/5/10	AER

DRAWING INTRODUCED. VARIANTS ADDED.

SPARE PARTS AND DIMENSIONAL DRAWING FOR TYPE A41SR DUAL VOLTAGE RESTRAINED SOCKET - 650/1300V 250A

Victor Victor Products Limited
Unit 3A, Tyne Dock East Side,
Port of Tyne, South Shields,
Tyne and Wear, NE33 5SQ,
United Kingdom.

DRAWING No. CP269
SHEET 1 OF 1
ISSUE No. 2