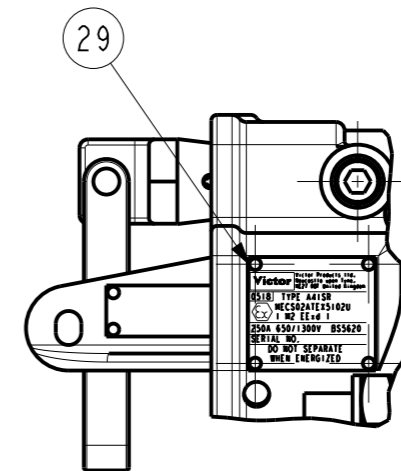
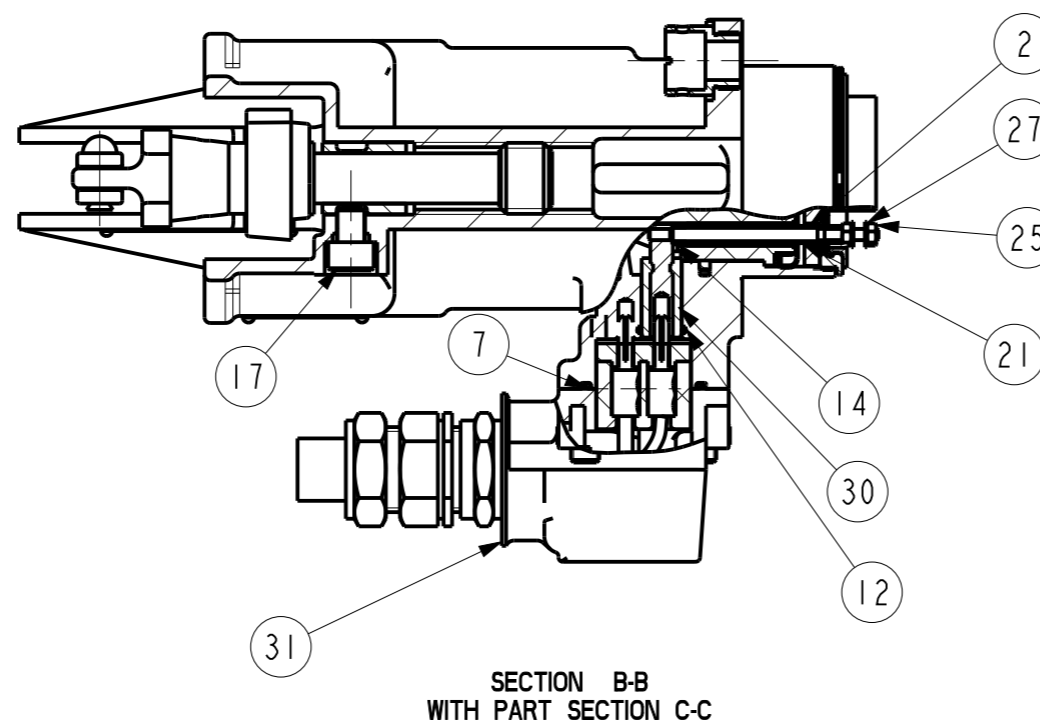
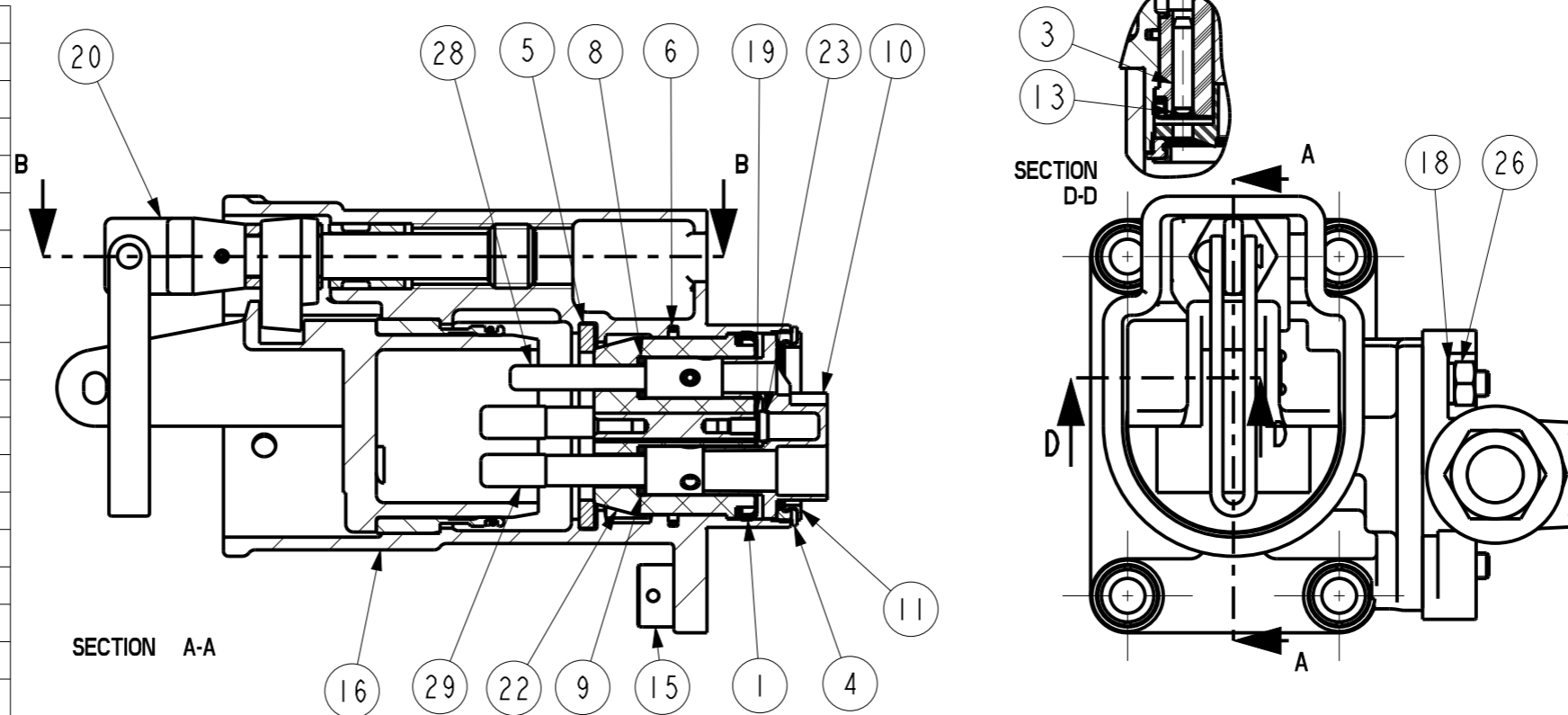


REF	ITEM NO.	DESCRIPTION	QTY	
A	1	MC121570	EARTH DISC	1
	2	MC122162	SCREENING TUBE	1
	3	MC122171	BLANKING PIN	1
	4	MC123222	RETAINING RING	1
	5	MC123229	GASKET	1
	6	MC123730	O RING	1
B	7	MC123803	O RING	1
	8	MC124375	PILOT CONTACT PIN SEAL	1
	9	MC124376	MAINS CONTACT PIN SEAL	3
	10	MC124385	INSULATOR CAP	1
	11	MC124386	INSULATING RING	1
	12	MC124387	O RING	1
	13	MC124389	O RING	1
C	14	MC124390	SILICONE SLEEVE	1
	15	MC124863	SHROUDS	4
	16	MC924927	SOCKET BODY ASSEMBLY	1
	17	GP218202	M10 x 12 LONG SCKT.HD.CAP SCREW	1
	18	GP256009	10 I.D. SPRING WASHER	2
	19	GP257076	LOCKWASHER - 6 I.D.	1
D	20	MC921233	WITHDRAWAL SPINDLE ASSEMBLY	1
	21	MC122161E	INSULATION TUBE	1
	22	MC122164E	INSULATOR	1
	23	GP216031D	M6 x 12 CHEESES HEAD SCREW	1
	24	GP224056S	HAMMER DRIVE SCREWS	4
	25	GP235001D	NUT - M4	2
E	26	GPC10-7	NUT - M10	2
	27	GP255023D	WASHER - 4 I.D.	2
	28	SEE TABLE	PILOT CONTACT PIN	1
	29	SEE TABLE	MAINS CONTACT PIN	3
	30	MC922109E	CONTACT PIN ASSEMBLY	1
	31	IPC PLUG	IPC PLUG - SEE SHEET 2	1

CONDUCTOR	MAINS & PILOT CONTACT PIN - GRUBSREWED		MAINS & PILOT CONTACT PIN - CRIMPED	
	MAINS	PILOT	MAINS	PILOT
4mm ²	-	-	-	MC921335
6mm ²	-	MC921111M	-	-
16mm ²	MC921577M	-	-	-
25mm ²	MC921577C	-	MC923614B	-
35mm ²	MC921577D	-	MC923614C	-
50mm ²	MC921577B	-	MC923614	-
70mm ²	MC921577A	-	MC923614A	-



DRAWING No.	ISSUE No.
CP270	2

CERTIFICATE RELATED DRAWING

NO MODIFICATIONS PERMITTED WITHOUT THE APPROVAL OF THE TECHNICAL MANAGER

DO NOT SCALE

DIMENSIONS IN MILLIMETRES (mm)

MAXIMUM MACHINED SURFACE TEXTURE um Ra 3.2

MACHINE WHERE MARKED THUS ✓

ANGULAR TOLERANCES ±1/2°

DIMENSIONAL TOLERANCES UNLESS OTHERWISE STATED

UPTO 6	±0.1
OVER 6 UPTO 30	±0.2
OVER 30 UPTO 100	±0.3
OVER 100 UPTO 300	±0.5
OVER 300	±0.8

TEST No.	PROCESS No.
200	- - -
DRAWN	HD
DATE	24/2/03
CHECKED	24/2/03 AER
APPROVED	24/2/03 BT
SCALE	3:8

2 DCR 24/7/12 AER

CHK 24/7/12 AER APP 24/7/12 AER

RE-DRAWN.

SHEET 2 ADDED.

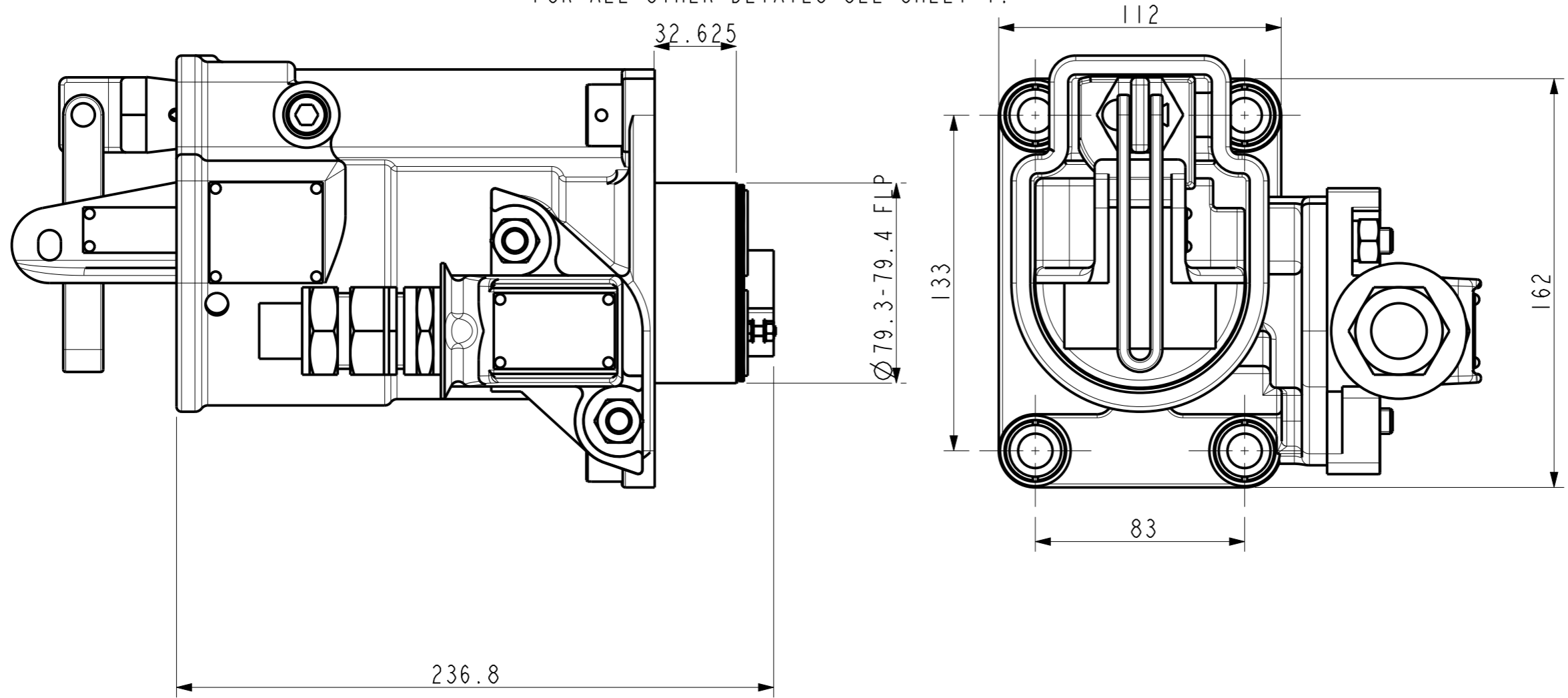
TYPE A41SR/A DUAL VOLTAGE RESTRAINED SOCKET WITH IPC TYPE A39P1/A PLUG.

Victor Victor Products Limited
Unit 3A, Tyne Dock East Side,
Port of Tyne, South Shields,
Tyne and Wear, NE33 5SQ,
United Kingdom.

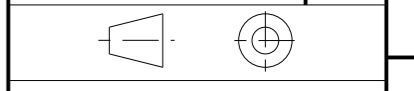
DRAWING No.	ISSUE No.
SHEET 1 OF 2	
CP270	2

MC925087A - IPC PLUG FITTED
WITH CERTIFIED GROUP 1
CABLE GLAND MGEIFX25IRA/M

FOR ALL OTHER DETAILS SEE SHEET 1.



DRAWING No.	ISSUE No.
CP270	0



CERTIFICATE RELATED DRAWING

NO MODIFICATIONS PERMITTED
WITHOUT THE APPROVAL OF
THE TECHNICAL MANAGER

DO NOT SCALE

DIMENSIONS IN MILLIMETRES (mm)
MAXIMUM MACHINED SURFACE
TEXTURE $\mu\text{m Ra } 3.2$
MACHINE WHERE MARKED THUS ✓

ANGULAR TOLERANCES $\pm 1/2^\circ$

DIMENSIONAL TOLERANCES
UNLESS OTHERWISE STATED

UPTO 6	± 0.1
OVER 6 UPTO 30	± 0.2
OVER 30 UPTO 100	± 0.3
OVER 100 UPTO 300	± 0.5
OVER 300	± 0.8

TEST No.	PROCESS No.
200	---

DRAWN	AER
-------	-----

DATE	24/7/12
------	---------

CHECKED	24/7/12 AER
---------	-------------

APPROVED	24/7/12 AER
----------	-------------

SCALE	1:1
-------	-----

DRAWING No.	ISSUE No.
SHEET 2 OF 2	

CP270	0
-------	---

0	DCR	DRN	24/7/12	AER
	CHK	24/7/12	AER	APP
		24/7/12	AER	

SHEET 2 INTRODUCED.

TYPE A41SR/A DUAL VOLTAGE RESTRAINED
SOCKET WITH IPC TYPE A39PI/A PLUG.

Victor Victor Products Limited
New York Way,
Newcastle upon Tyne,
NE27 0QF, United Kingdom.