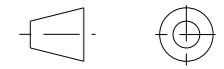


DRAWING No.	ISSUE No.
CP329	0



CERTIFICATE RELATED DRAWING

NO MODIFICATIONS PERMITTED WITHOUT THE APPROVAL OF THE TECHNICAL MANAGER

DO NOT SCALE

DIMENSIONS IN MILLIMETRES (mm)
 MAXIMUM MACHINED SURFACE
 TEXTURE $\mu\text{m Ra } 3.2$
 MACHINE WHERE MARKED THUS

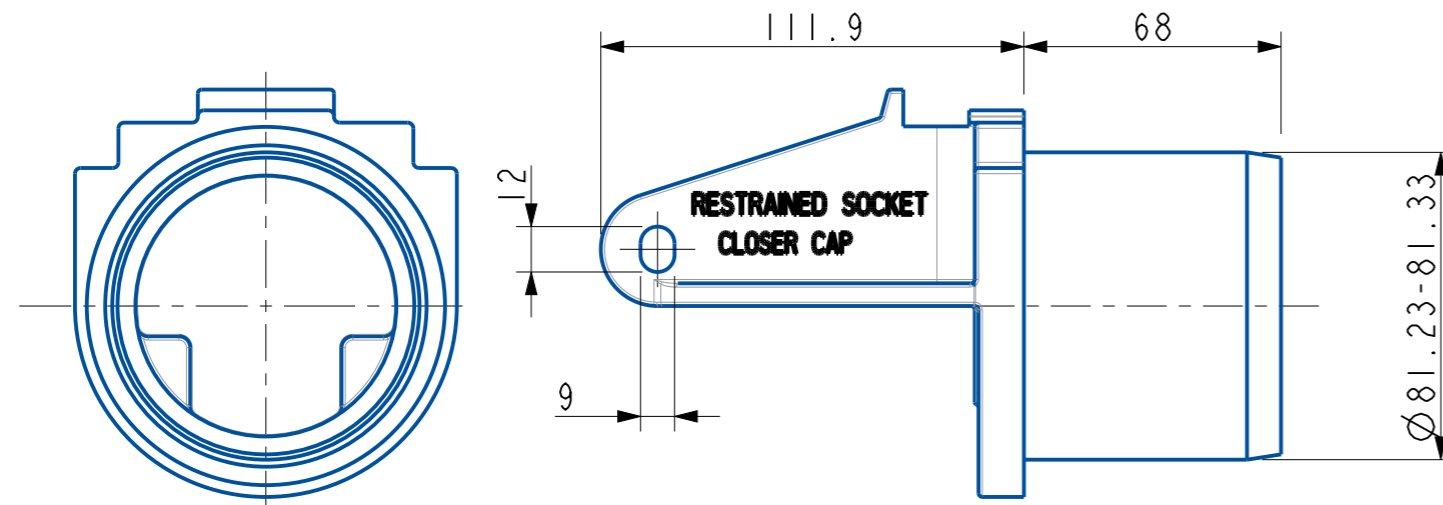
ANGULAR TOLERANCES $\pm 1/2^\circ$

DIMENSIONAL TOLERANCES UNLESS OTHERWISE STATED

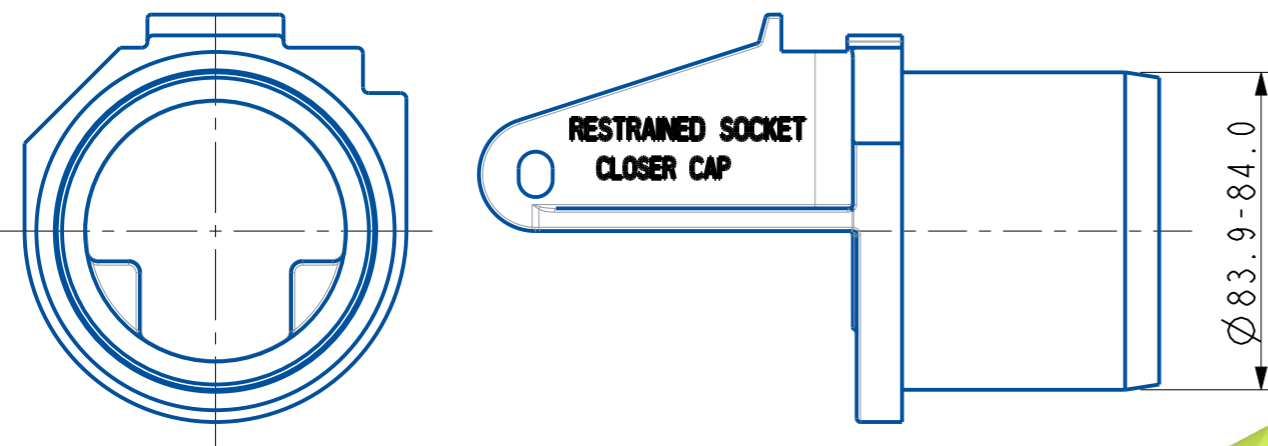
UPTO 6	± 0.1
OVER 6 UPTO 30	± 0.2
OVER 30 UPTO 100	± 0.3
OVER 100 UPTO 300	± 0.5
OVER 300	± 0.8

TEST No.	PROCESS No.
200	---
DRAWN	HD
DATE	28/08/13
CHECKED	28/08/13 CK
APPROVED	28/08/13 HD
SCALE	1:2

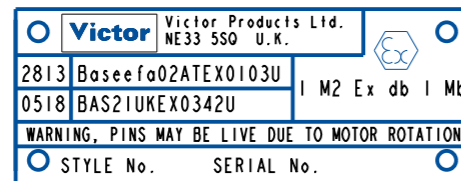
DRAWING No.	ISSUE No.
SHEET 1 OF 1	
CP329	0



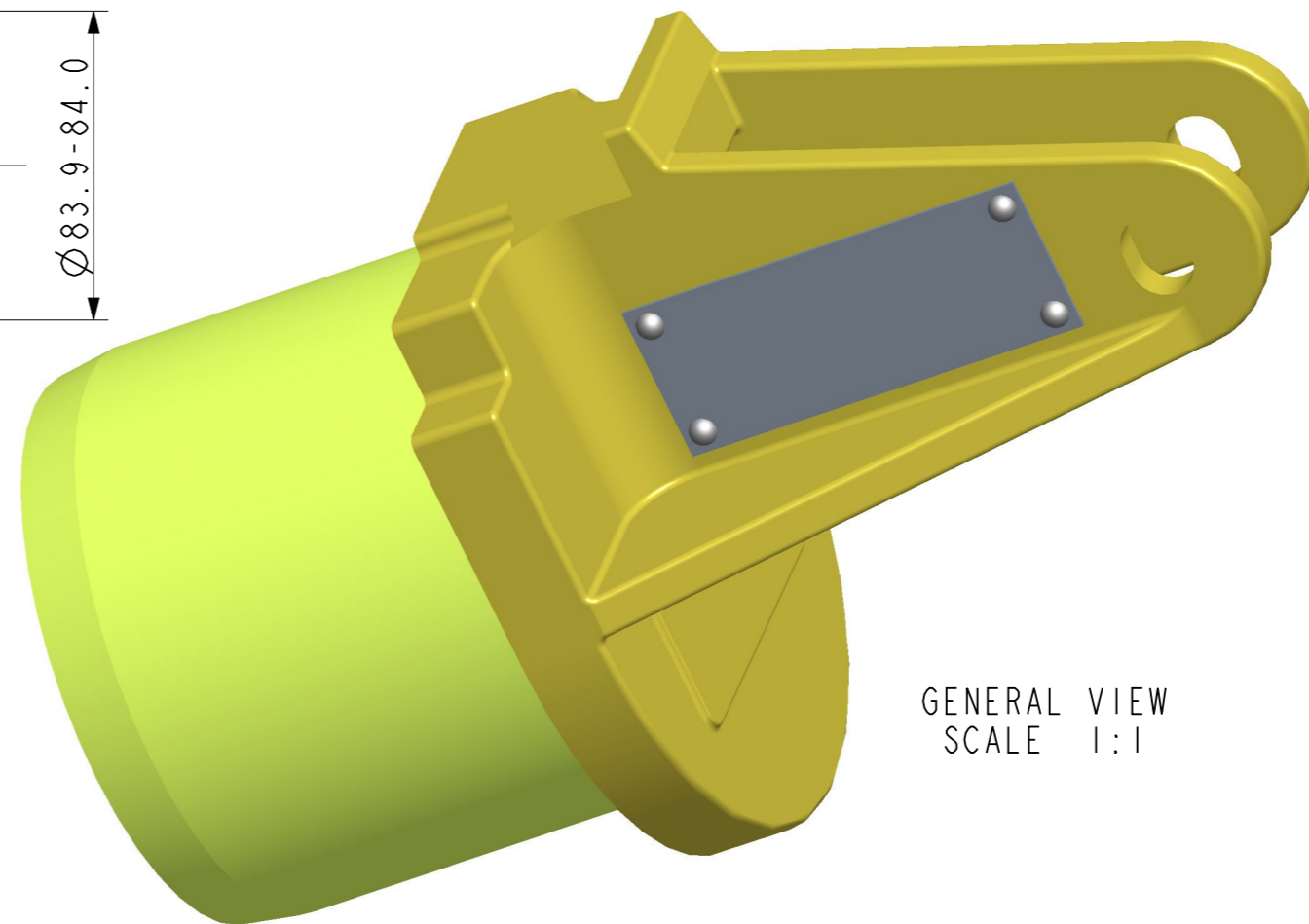
A42 CLOSER CAP FOR TYPE 7 CONFIGURED SOCKETS
 STYLE NO. MCA002661E



A42 CLOSER CAP FOR TYPE 7S CONFIGURED SOCKETS
 STYLE NO. MCA002661S



TYPICAL NAMEPLATE



GENERAL VIEW
 SCALE 1:1

DCR	DRN	28/08/13	HD
CHK	APP	28/08/13	HD

DRAWING INTRODUCED.

CLOSER CAPS FOR TYPE A42SR SOCKETS.

Victor Victor Products Limited
 New York Way,
 Newcastle upon Tyne,
 NE27 0QF, United Kingdom.