

TYPICAL STYLE No.

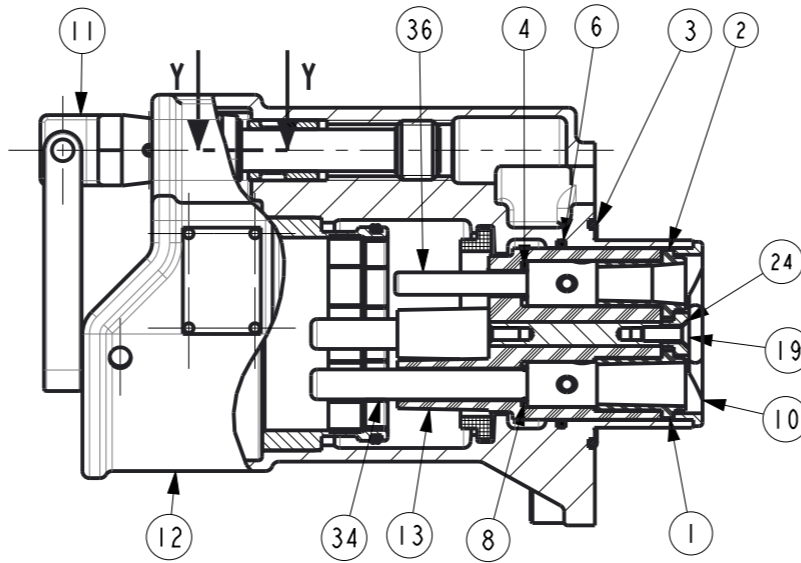
TYPE A42SR	TYPE A42SR/C	TYPE A42SR/A
------------	--------------	--------------

3 PHASE + 1 PILOT	3 PHASE + 3 AUXIL.	3 PHASE + 1 PILOT + I.P.C PLUG.
-------------------	--------------------	---------------------------------

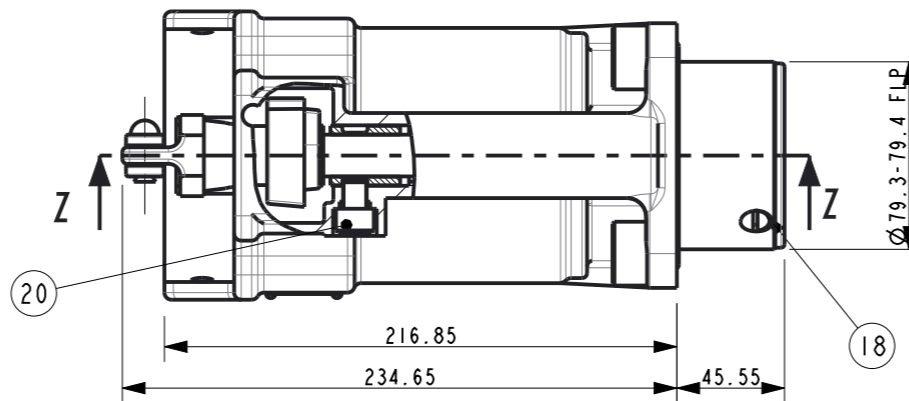
MCA002833E P. BORED - GRUB	MCA002833AE 50mm2 - CRIMP	MCA002715E P. BORED - GRUB	MCA002715AE 50mm2 - CRIMP	MCA002812E P. BORED - GRUB	MCA002812BE 70mm2 - CRIMP
-------------------------------	------------------------------	-------------------------------	------------------------------	-------------------------------	------------------------------

REF. No	ITEM No.	DESCRIPTION	MCA002833E P. BORED - GRUB		MCA002833AE 50mm2 - CRIMP		MCA002715E P. BORED - GRUB		MCA002715AE 50mm2 - CRIMP		MCA002812E P. BORED - GRUB		MCA002812BE 70mm2 - CRIMP	
1	120892	RETAINING TUBE	3	3										
2	120893	RETAINING TUBE												
3	121530	O RING												
4	123318	O RING												
5	123803	O RING												
6	123841	O RING												
7	123857	O RING												
8	123858	O RING	3	3			3	3			3	3		
9	124389	O RING					3	3						
10	123839	INSULATOR CLAMP												
11	921233	WITHDRAWL SPINDLE ASSY												
12	925015	SOCKET BODY ASSY												
	925017	SOCKET BODY ASSY												
	925018	SOCKET BODY ASSY												
13	121519E	SOCKET INSULATOR												
	923432E	SOCKET INSULATOR												
	923844E	SOCKET INSULATOR												
14	123434	INNER INSULATOR												
18	217058	SCR M6 x 10 CSK HD	2	2			2	2			2	2		
19	217215	SCR M6 x 20 CSK HD												
20	218202	SCR M10 x 12 CAP HD												
21	216039	SCR M4 x 16 CH HD												
22	216040D	SCR M3 x 8 CH HD									2	2		
23	235003P	NUT M10									2	2		
24	252126	LOCKWASHER 6 I/D												
25	255016D	LOCKWASHER 3 I/D									2	2		
26	256009	LOCKWASHER 10 I/D									2	2		
27	257027	LOCKWASHER 4 I/D												
28	925087A	IPC GLAND ASSY												
29	923828	INSULATOR ASSY												
30	923830A	WIRING ELBOW												
33	123889	SEAL												
34	921526M	MAINS PIN - 16mm2 GRUB	3				3				3			
	921526A	MAINS PIN - 50mm2 GRUB												
	921526B	MAINS PIN - 70mm2 GRUB												
	921526C	MAINS PIN - 35mm2 GRUB												
	921526D	MAINS PIN - 25mm2 GRUB												
35	921563	MAINS PIN - 50mm2 CRIMP			3						3			
	921563A	MAINS PIN - 70mm2 CRIMP											3	
	921563B	MAINS PIN - 25mm2 CRIMP												
	921563C	MAINS PIN - 35mm2 CRIMP												
36	921522M	PILOT CONTACT PIN - GRUB												
	921564	PILOT CONTACT PIN - CRIMP												
37	923441E	AUXILLIARY PIN - GRUB					3							
	123439E	AUXILLIARY PIN - CRIMP						3						

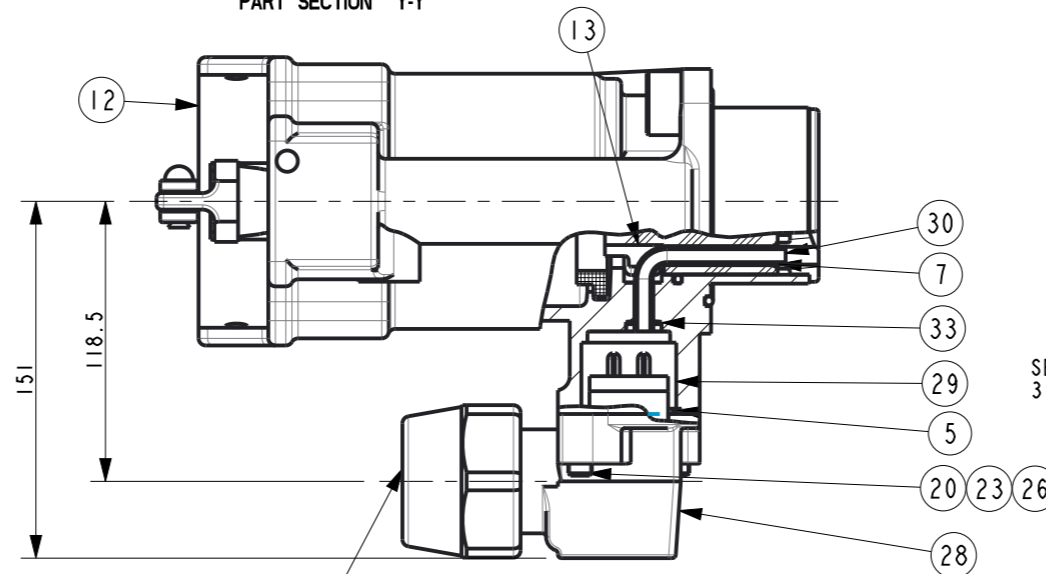
REF. Nos. 21, 22, 25 & 27 ARE NOT SHOWN FOR CLARITY.



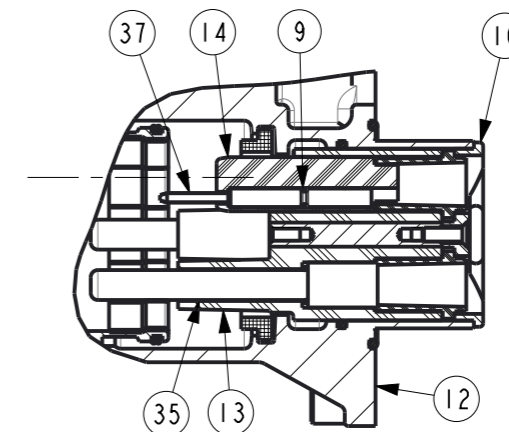
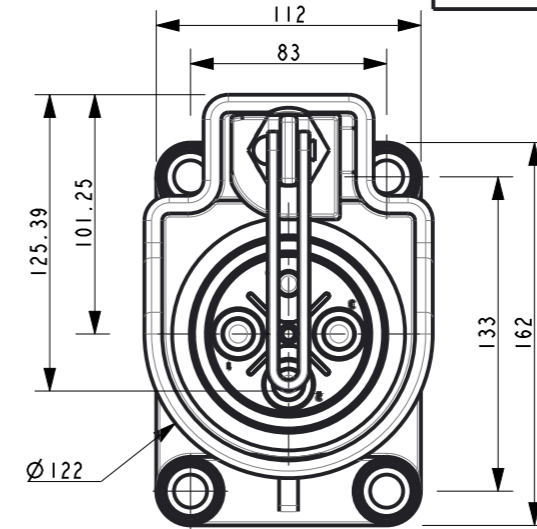
SECTION 'Z - Z' SHOWING SOCKET WITH 3 PHASE + 1 PILOT



PART SECTION Y-Y



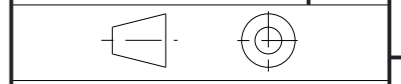
NOTE: IPC PLUG HAS BEEN REDESIGNED. GLAND NUT AND CLAMPS HAVE BEEN REPLACED BY A CERTIFIED COMPRESSION GLAND.



SECTION 'Z - Z' SHOWING SOCKET WITH 3 PHASE + 3 AUXILIARIES.

SECTION X-X SHOWING SOCKET WITH 3 PHASE + 1 PILOT + I.P.C PLUG.

DRAWING No.	ISSUE No.
CP297	0



CERTIFICATE RELATED DRAWING

NO MODIFICATIONS PERMITTED WITHOUT THE APPROVAL OF THE TECHNICAL MANAGER

DO NOT SCALE

DIMENSIONS IN MILLIMETRES (mm)
MAXIMUM MACHINED SURFACE
TEXTURE um Ra 3.2
MACHINE WHERE MARKED THUS ✓

ANGULAR TOLERANCES ±1/2°

DIMENSIONAL TOLERANCES UNLESS OTHERWISE STATED

UPTO 6	±0.1
OVER 6 UPTO 30	±0.2
OVER 30 UPTO 100	±0.3
OVER 100 UPTO 300	±0.5
OVER 300	±0.8

TEST No.	PROCESS No.
200	---

DRAWN	AER
DATE	28/9/10
CHECKED	28/9/10 AER
APPROVED	28/9/10 AER
SCALE	5:16

DRAWING No.	ISSUE No.
SHEET 1 OF 2	
CP297	0

DCR	DRN	28/9/10	AER
CHK	AER	APP	28/9/10

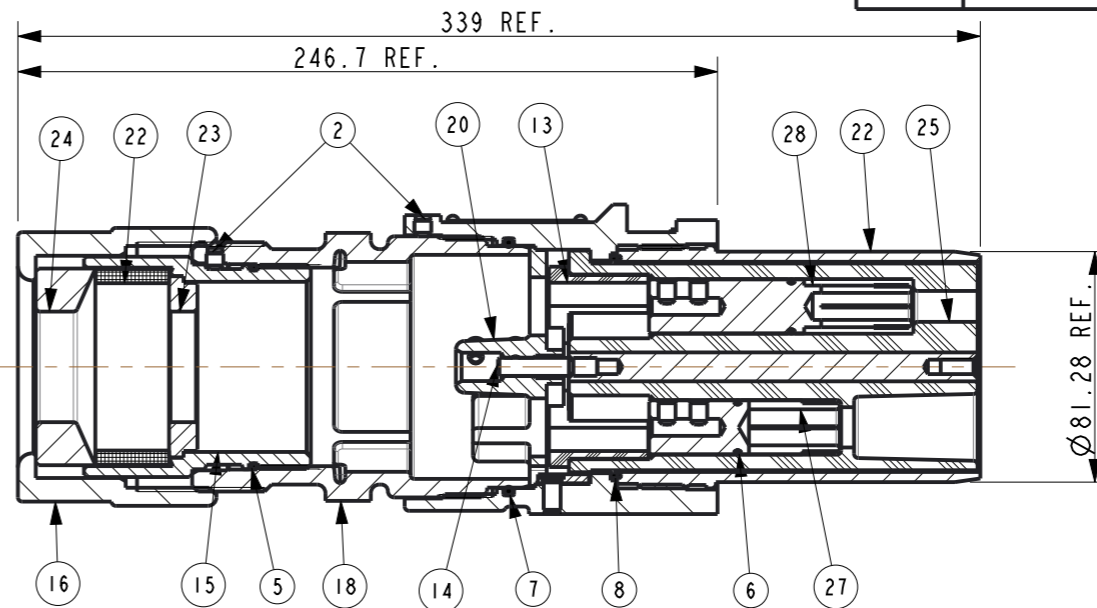
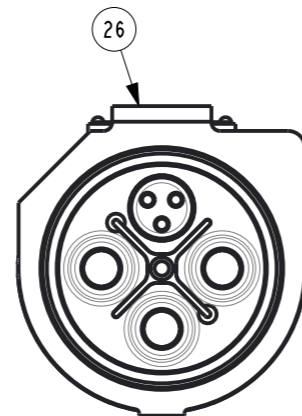
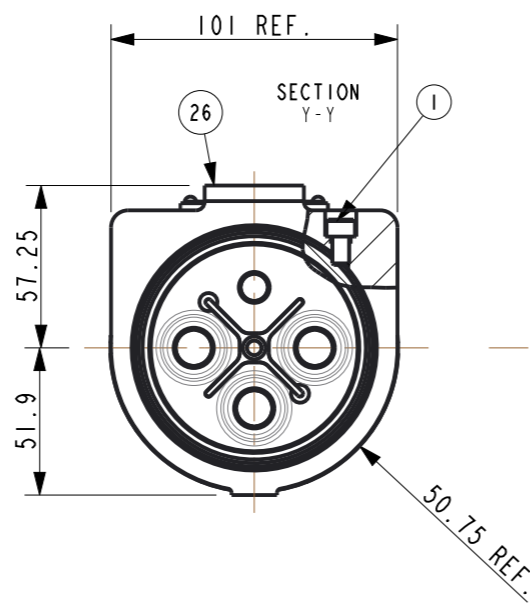
REDRAWN. PLUG AND SOCKET COMBINED ON ONE DRAWING.

A42 RESTRAINED SOCKET

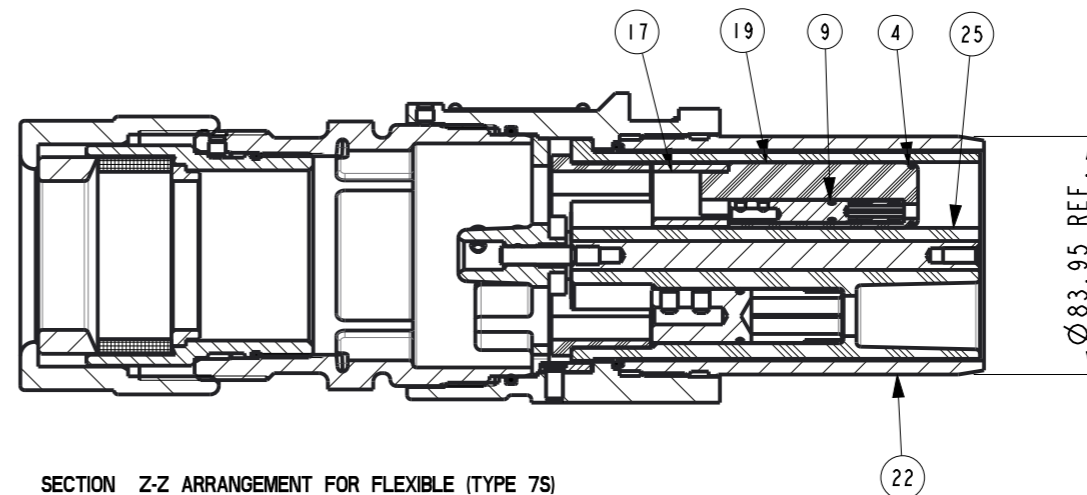
Victor

Victor Products Limited
New York Way,
Newcastle upon Tyne,
NE27 0QF, United Kingdom.

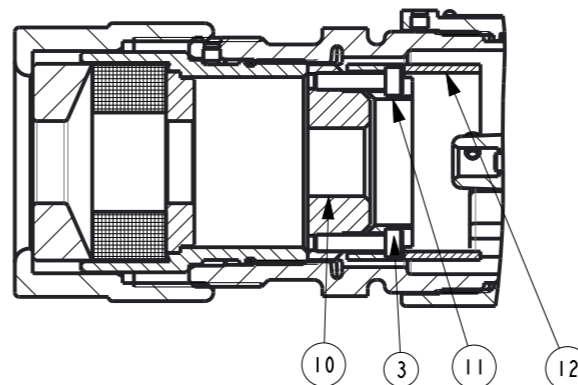
No	COMP. No	DESCRIPTION	TYPE A42PR		TYPE A42PR/C	TYPE A42PR/A
			TYPE 7	TYPE 7M	TYPE 7S	TYPE 64
			MCA002905AE P. BORED GRUB.	MCA002905BCE 50mm2 CRIMP.	MCA002905RE 50mm2 GRUB.	MCA002714DE 70mm2 GRUB.
1	218167X	M6 x 10 HEX SKT CAP SCR	1	1	1	1
2	228030S	M6 x 6 HEX SKT SET SCR	2	2	2	2
3	218159A	M6 x 25 HEX SKT CAP SCR				4
4	115110	O RING				1
5	123412	O RING	1	1	1	1
6	123475	O RING	4	4	4	3
7	123557	O RING	1	1	1	1
8	123730	O RING	1	1	1	1
9	124389	O RING				3
10	123401	AMOUR CLAMP SEAT				1
	123401B	AMOUR CLAMP SEAT				
11	123402	ARMOUR CLAMP				1
12	123403A	SPACER TUBE - SHORT				1
	123403B	SPACER TUBE - LONG				
13	124282	INSULATOR CAP	1	1	1	1
14	124284	EARTH PIN	1	1	1	1
15	124457	CABLE CLAMP	1	1	1	1
16	124460	GLAND NUT	1	1	1	1
17	123438	SLEEVE	1	1	1	1
18	123712	PLUG BODY	1	1	1	1
19	124409	INNER INSULATOR	1	1	1	1
20	924283	EARTH CLAMP	1	1	1	1
21	124951	INSTALLATION LEAFLET	1	1	1	1
22	120902	PLUG BARREL	1	1	1	1
	123436	PLUG BARREL				
23	124423E	CLAMP RING - 60/52 CABLE	1			
	124423F	CLAMP RING - 52/43 CABLE	1			
	124423G	CLAMP RING - 43/35 CABLE	1			
	124423H	CLAMP RING - 35/26 CABLE	1			
24	124458A	CLAMP INSERT - 52.5 I/D		1	1	
	124458B	CLAMP INSERT - 47.0 I/D				1
	124458C	CLAMP INSERT - 43.0 I/D				1
	124458D	CLAMP INSERT - 39.0 I/D	1			
	124458E	CLAMP INSERT - 29.0 I/D				1
	124458F	CLAMP INSERT - 33.5 I/D				1
25	124459A	CLAMP WASHER - 52.5 I/D		1	1	
	124459B	CLAMP WASHER - 47.0 I/D				1
	124459C	CLAMP WASHER - 43.0 I/D				1
	124459D	CLAMP WASHER - 39.0 I/D	1			
	124459E	CLAMP WASHER - 29.0 I/D				1
	124459F	CLAMP WASHER - 59.0 I/D				1
	124459G	CLAMP WASHER - 33.5 I/D				1
26	923433	INSULATOR				1
	924287	INSULATOR	1	1	1	
27	924968	COUPLING BODY ASSY				1
	925011	COUPLING BODY ASSY	1	1	1	
28	923716	MAINS CONT. TUBE P/BORE GRUB	3			3
	923716A	MAINS CONT. TUBE 50mm2 GRUB		3		
	923716B	MAINS CONT. TUBE 70mm2 GRUB				
	923716C	MAINS CONT. TUBE 35mm2 GRUB				
	923716D	MAINS CONT. TUBE 25mm2 GRUB				
	923716E	MAINS CONT. TUBE 16mm2 GRUB				
	924595A	MAINS CONT. TUBE 50mm2 CRIMP	3			
	924595B	MAINS CONT. TUBE 70mm2 CRIMP				
29	923672	PILOT CONT. TUBE - 16mm2 GRUB	1			1
	923672A	PILOT CONT. TUBE - 25mm2 GRUB				
	923672B	PILOT CONT. TUBE - 35mm2 GRUB				
	923672E	PILOT CONT. TUBE - 50mm2 GRUB		1		
	924596A	PILOT CONT. TUBE - 25mm2 CRIMP	1			
	924596B	PILOT CONT. TUBE - 35mm2 CRIMP				
	923442E	AUX. CONT. TUBE - 6mm2 GRUB			3	
	924462E	AUX. CONT. TUBE - 6mm2 CRIMP				



SECTION Z-Z ARRANGEMENT FOR FLEXIBLE (TYPE 7 & 7M) CONFIGURED CABLES (3 PHASE + 1 PILOT).

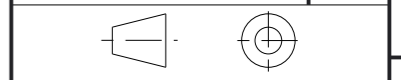


SECTION Z-Z ARRANGEMENT FOR FLEXIBLE (TYPE 7S) CONFIGURED CABLES (3 PHASE + 3 AUXILIARY).



SECTION Z-Z ARRANGEMENT FOR PWA TYPE (64) CABLES (3 PHASE + 1 PILOT).

DRAWING No.	ISSUE No.
CP297	0



CERTIFICATE RELATED DRAWING

NO MODIFICATIONS PERMITTED WITHOUT THE APPROVAL OF THE TECHNICAL MANAGER

DO NOT SCALE

DIMENSIONS IN MILLIMETRES (mm)
MAXIMUM MACHINED SURFACE
TEXTURE um Ra 3.2
MACHINE WHERE MARKED THUS ✓

ANGULAR TOLERANCES ±1/2°

DIMENSIONAL TOLERANCES UNLESS OTHERWISE STATED	
UPTO 6	±0.1
OVER 6 UPTO 30	±0.2
OVER 30 UPTO 100	±0.3
OVER 100 UPTO 300	±0.5
OVER 300	±0.8

TEST No.	PROCESS No.
200	---

DRAWN	AER
DATE	24/9/10
CHECKED	24/9/10 AER
APPROVED	24/9/10 AER
SCALE	1:1

DRAWING No.	ISSUE No.
SHEET 2 OF 2	
CP297	0

A42 RESTRAINED PLUG.

Victor

Victor Products Limited
New York Way,
Newcastle upon Tyne,
NE27 0QF, United Kingdom.

DCR	DRN	24/9/10	AER
CHK	24/9/10	AER	APP
		24/9/10	AER

REDRAWN. PLUG AND SOCKET COMBINED ON ONE DRAWING.