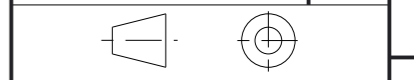


DRAWING No.	ISSUE No.
CP298	2



CERTIFICATE RELATED DRAWING

NO MODIFICATIONS PERMITTED WITHOUT THE APPROVAL OF THE TECHNICAL MANAGER

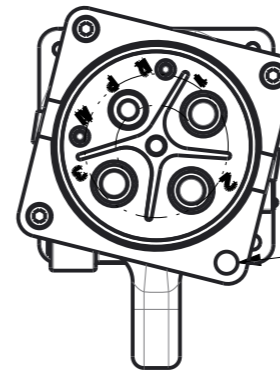
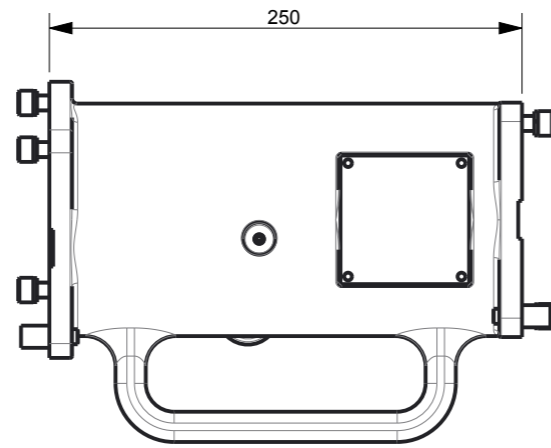
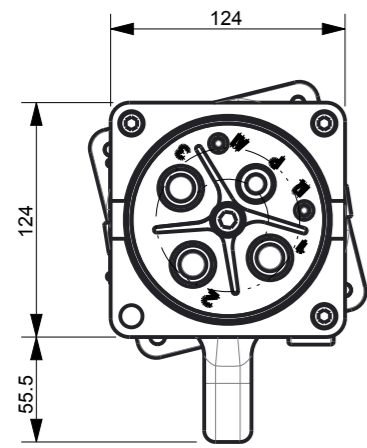
DO NOT SCALE

DIMENSIONS IN MILLIMETRES (mm)  
 MAXIMUM MACHINED SURFACE  
 TEXTURE  $\mu\text{m Ra } 3.2$   
 MACHINE WHERE MARKED THUS ✓

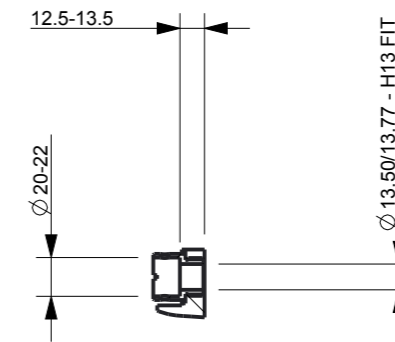
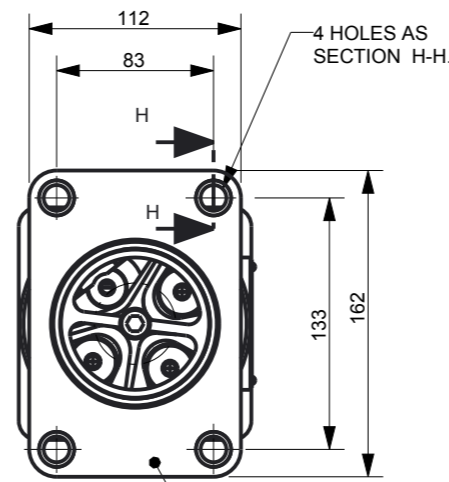
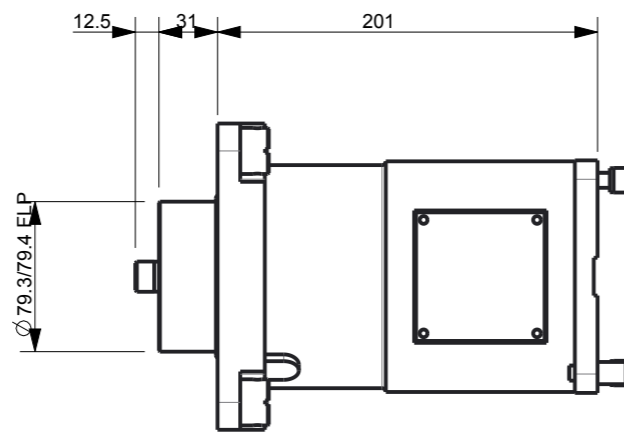
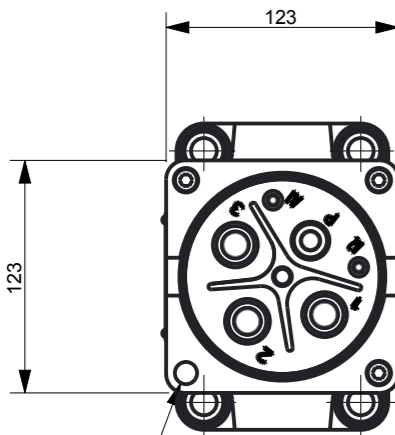
DIMENSIONAL TOLERANCES UNLESS OTHERWISE STATED

TEST No.	PROCESS No.
	---
DRAWN	AER
DATE	30/9/05
CHECKED	30/9/05 AER
APPROVED	30/9/05 AER
SCALE	1:4

DRAWING No.	ISSUE No.
SHEET 1 OF 6	
CP298	2



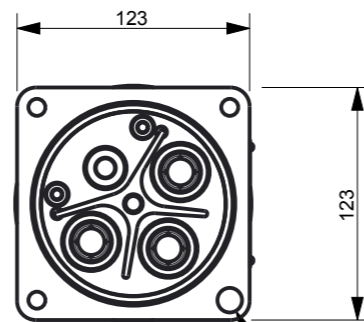
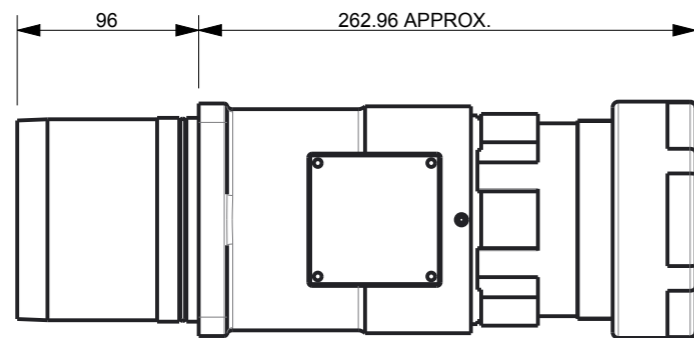
TYPE A43SCB BOLTED PLUG COUPLER.  
 Baseefa09ATEX0122X  
 IECEx BAS 09.0049X



SECTION H-H

TYPE A43SB BOLTED SOCKET.  
 Baseefa09ATEX0121U  
 IECEx BAS 09.0048U

INTERFACE FLANGE, SPIGOT AND FIXING HOLES DESIGNED TO BS5620.



TYPE A43PB BOLTED PLUG.  
 Baseefa09ATEX0121U  
 IECEx BAS 09.0048U

ENCLOSURE AND FASTENER NOTES.  
 THE MATING HOLES IN THE ASSOCIATED ENCLOSURE SHOULD BE THREADED IN ACCORDANCE WITH CLAUSE 9.3 OF EN50014:1997 (EN60079-1:2004 CLAUSE 11).  
 ANY ASSOCIATED FASTENERS USED WITH THESE SOCKETS SHOULD IN ACCORDANCE WITH EN50014:1997 CLAUSE 9.2 (EN60079-1:2004 CLAUSE 11).

1	DCR	DRN	30/9/05	AER	2	DCR	DRN	04/7/11	AER
	CHK	AERAPP	30/9/05	AER		CHK	AERAPP	04/7/11	AER

DRAWING INTRODUCED.

DRAWING UPDATED.  
 NOW 5 SHEETS.

DETAILS OF TYPE A43 RANGE.



Victor Products Limited  
 New York Way,  
 Newcastle upon Tyne,  
 NE27 0QF, United Kingdom.

DRAWING No.	ISSUE No.
<b>CP298</b>	<b>1</b>



CERTIFICATE RELATED DRAWING

NO MODIFICATIONS PERMITTED WITHOUT THE APPROVAL OF THE TECHNICAL MANAGER

**DO NOT SCALE**

DIMENSIONS IN MILLIMETRES (mm)  
 MAXIMUM MACHINED SURFACE  
 TEXTURE  $\mu\text{m Ra } 3.2$   
 MACHINE WHERE MARKED THUS

ANGULAR TOLERANCES  $\pm 1/2^\circ$

DIMENSIONAL TOLERANCES UNLESS OTHERWISE STATED

UPTO 6	$\pm 0.1$
OVER 6 UPTO 30	$\pm 0.2$
OVER 30 UPTO 100	$\pm 0.3$
OVER 100 UPTO 300	$\pm 0.5$
OVER 300	$\pm 0.8$

TEST No.	PROCESS No.
----------	-------------

<b>200</b>	<b>---</b>
------------	------------

DRAWN	AER
-------	-----

DATE	4/7/11
------	--------

CHECKED	4/7/11 AER
---------	------------

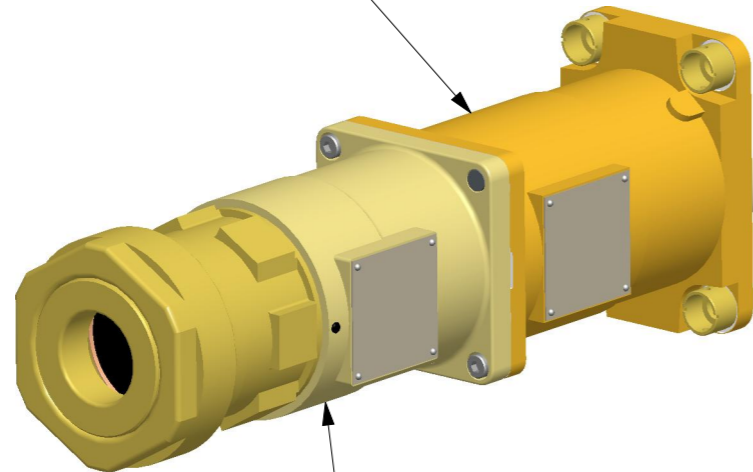
APPROVED	4/7/11 AER
----------	------------

SCALE	1:1
-------	-----

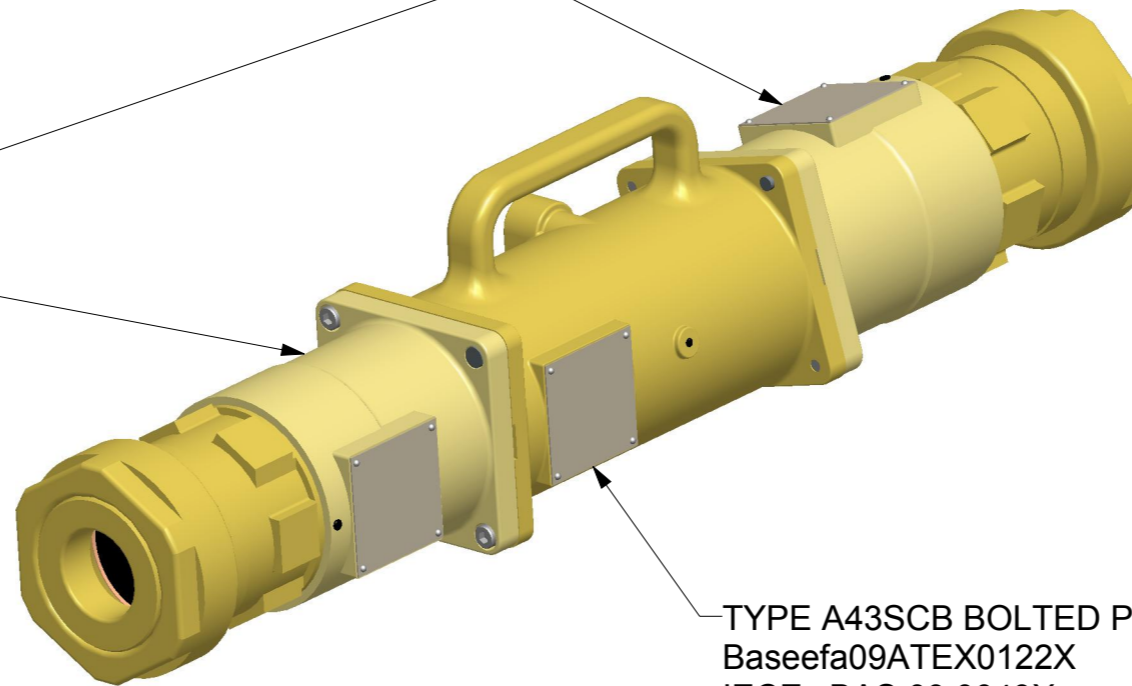
DRAWING No.	ISSUE No.
SHEET 2 OF 6	

**CP298**  
**1**

TYPE A43SB BOLTED SOCKET.  
 Baseefa09ATEX0121U  
 IECEx BAS 09.0048U



TYPE A43PB BOLTED PLUGS.  
 Baseefa09ATEX0121U  
 IECEx BAS 09.0048U



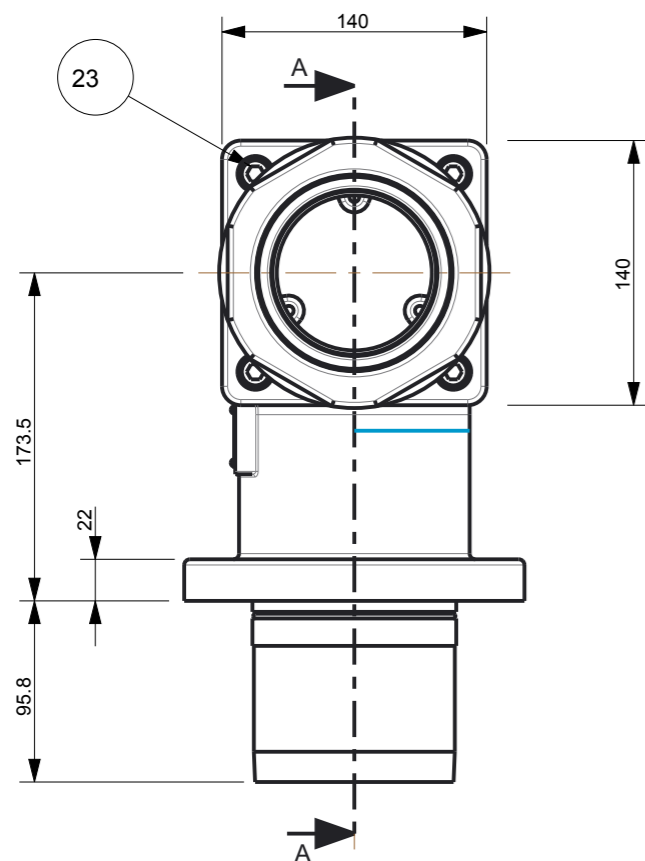
TYPE A43SCB BOLTED PLUG COUPLER.  
 Baseefa09ATEX0122X  
 IECEx BAS 09.0049X

<b>1</b>	DCR	DRN	4/7/11	AER
CHK	4/7/11	AERAPP	4/7/11	AER

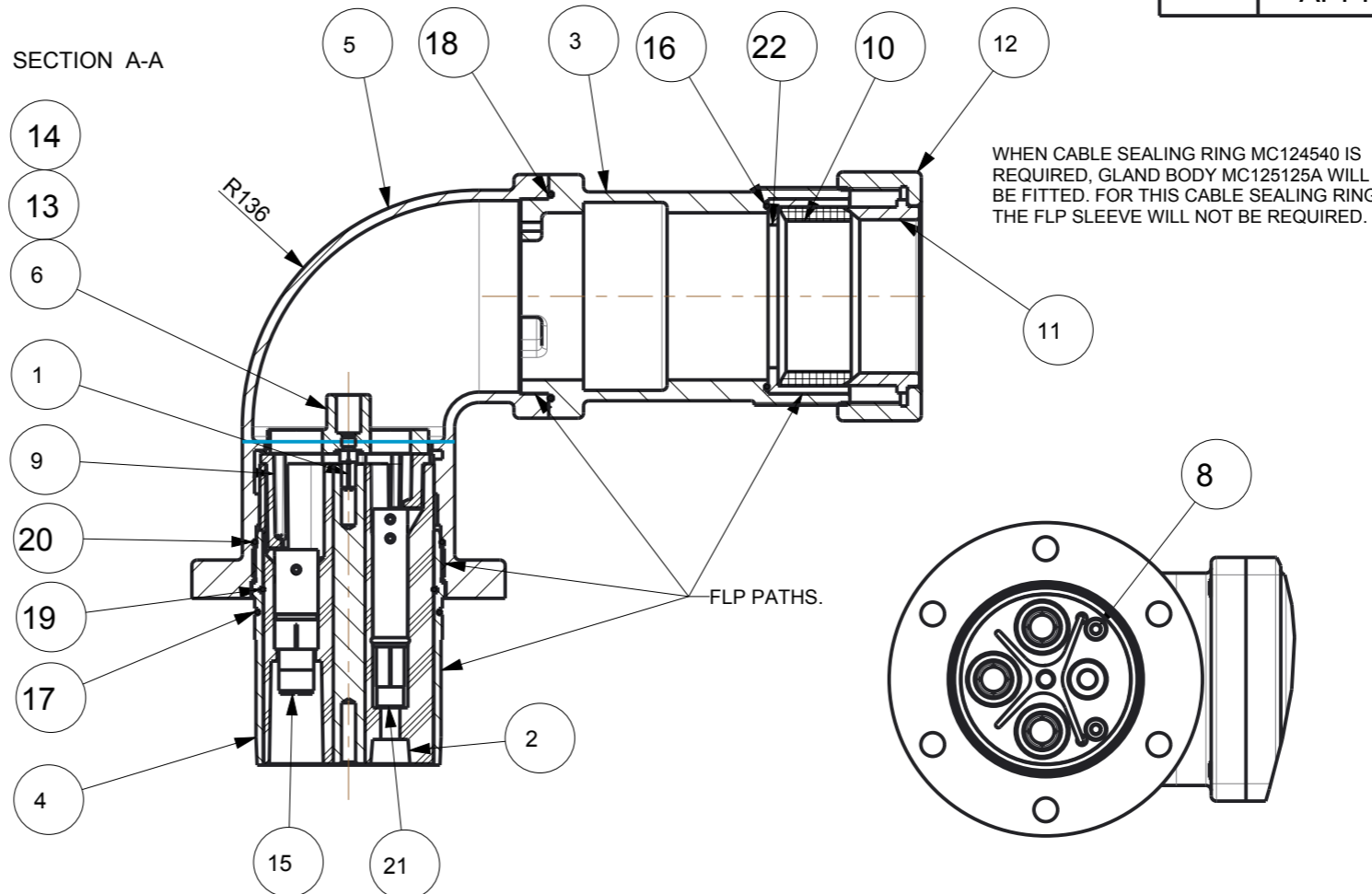
DRAWING UPDATED.  
 NOW 5 SHEETS.

DETAILS OF ASSEMBLED ITEMS OF  
 A43 CONNECTOR RANGE.

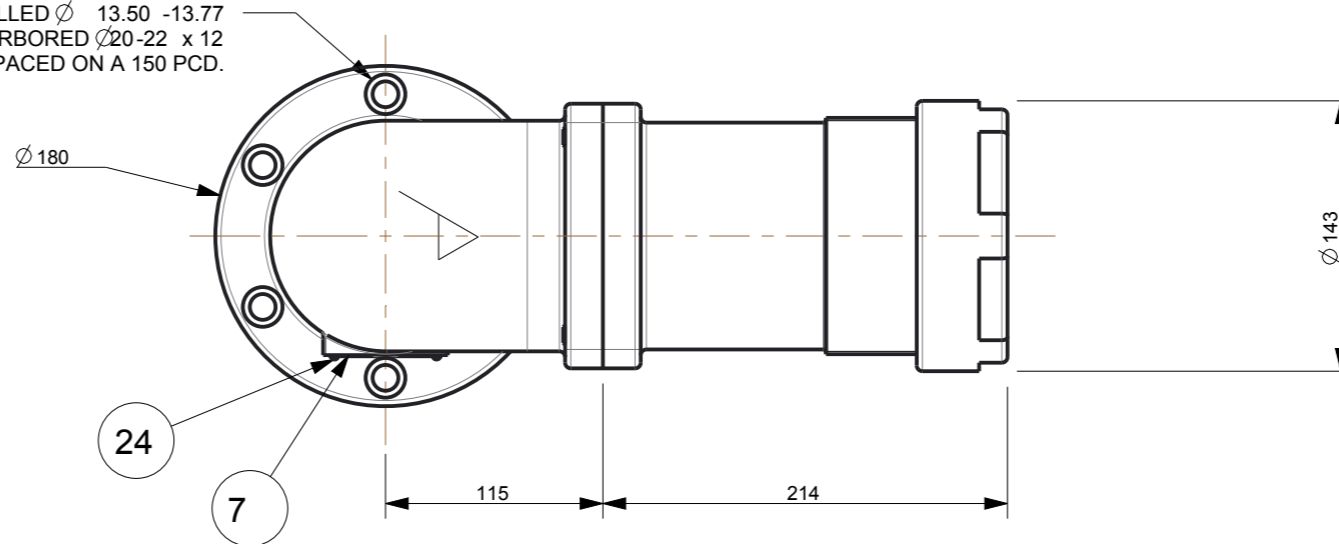
**Victor** Victor Products Limited  
 New York Way,  
 Newcastle upon Tyne,  
 NE27 0QF, United Kingdom.



SECTION A-A



6 HOLES DRILLED  $\varnothing$  13.50 -13.77 THRO', COUNTERBORED  $\varnothing$ 20-22 x 12 DEEP EQUA-SPACED ON A 150 PCD.



TYPE A43RAPB BOLTED PLUG.  
Baseefa09ATEX0121U  
IECEx BAS 09.0048U

WHEN ORDERING, PLEASE ENSURE THE FOLLOWING MINIMUM CABLE INFORMATION IS SUPPLIED.  
OUTSIDE DIAMETER OF CABLE IN mm.  
THE SIZE IN mm<sup>2</sup> FOR THE MAINS, PILOT AND AUXILIARY CONDUCTORS, NUMBER OF CORES ALONG WITH TYPE OF TERMINATION REQUIRED.

REF. No.	ITEM No.	DESCRIPTION	No. OFF
1	124543	A43 EARTH PIN	1
2	124563	A43 PLUG INSULATOR	1
3	125125	A43RA GLAND BODY	1
4	125126	A43RA PLUG BARREL	1
5	125123	A43RA PLUG BODY	1
6	125131	A43RA PLUG EARTH PLATE.	1
7	125202	A43RAPB NAMEPLATE	1
8	924529	AUXILIARY CONTACT TUBE ASSY	2
9	124565	BACKUP INSULATOR	1
10	124539	CABLE SEALING RING	1
11	124518C	CLAMP CONE	1
12	124550	GLAND NUT	1
13	228029	GRUBSCREW M6 - FLAT POINT	2
14	228065	GRUBSCREW M8 - FLAT POINT	4
15	924609-	MAINS CONTACT PIN ASSEMBLY	3
16	124578	O RING	1
17	125132	O RING	1
18	125133	O RING	1
19	125134	O RING	1
20	125141	O RING	1
21	924612-	PILOT CONTACT TUBE - GRUBSCREW.	1
22	125138-	SLEEVE FOR TYPE A43PB	1
23	218190X	SOCKET HEAD CAP SCREW - M10 X 30 LONG	4
24	GP224056S	HAMMER DRIVE SCREW	4

DRAWING No.	ISSUE No.
CP298	2

CERTIFICATE RELATED DRAWING

NO MODIFICATIONS PERMITTED WITHOUT THE APPROVAL OF THE TECHNICAL MANAGER

DO NOT SCALE

DIMENSIONS IN MILLIMETRES (mm)  
MAXIMUM MACHINED SURFACE  
TEXTURE um Ra 3.2  
MACHINE WHERE MARKED THUS ✓

ANGULAR TOLERANCES  $\pm 1/2^\circ$

DIMENSIONAL TOLERANCES UNLESS OTHERWISE STATED

UPTO 6	$\pm 0.1$
OVER 6 UPTO 30	$\pm 0.2$
OVER 30 UPTO 100	$\pm 0.3$
OVER 100 UPTO 300	$\pm 0.5$
OVER 300	$\pm 0.8$

TEST No. PROCESS No.

200 ---

DRAWN AER

DATE 4/7/11

CHECKED 4/7/11 AER

APPROVED 4/7/11 AER

SCALE 1:1

1	DCR	DRN	4/7/11	AER	2	DCR	DRN	16/8/12	AER
CHK	4/7/11	AERAPP	4/7/11	AER	CHK	16/8/12	AERAPP	16/8/12	AER

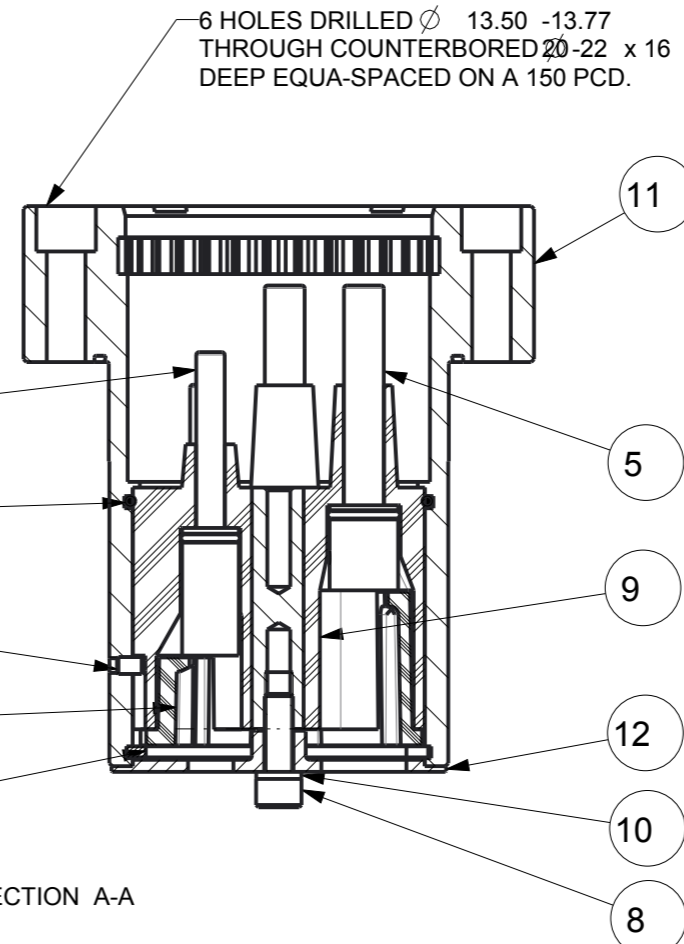
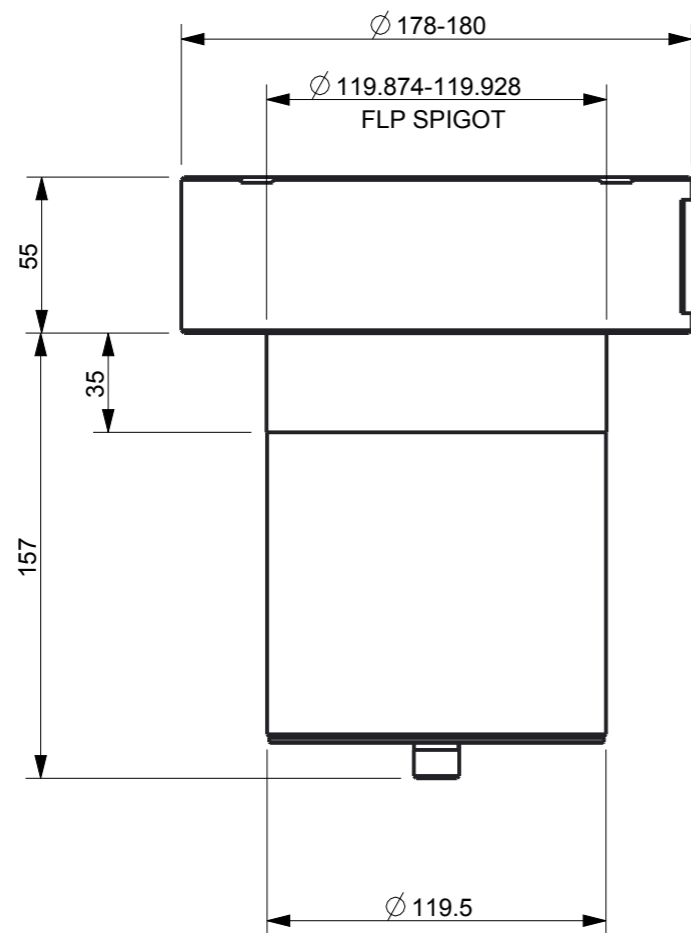
DRAWING UPDATED. NOW 4 SHEETS.

DRAWING UPDATED. NOW 5 SHEETS

DETAILS OF A43RAPB BOLTED PLUG.

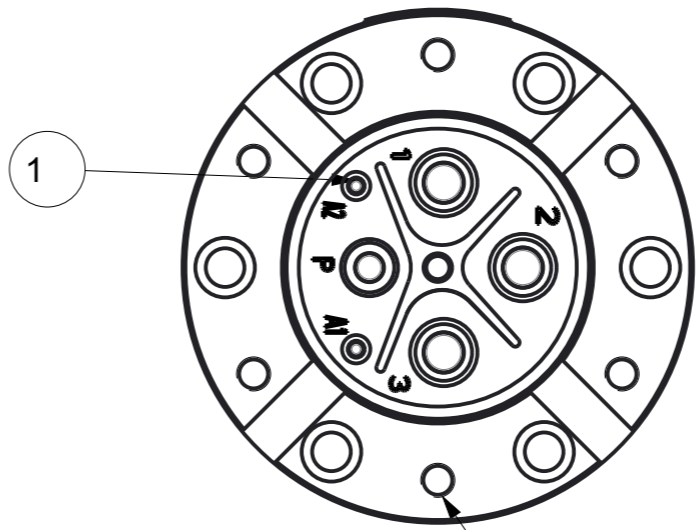
**Victor** Victor Products Limited  
New York Way,  
Newcastle upon Tyne,  
NE27 0QF, United Kingdom.

DRAWING No.	ISSUE No.
SHEET 3 OF 6	
CP298	2



6 HOLES DRILLED  $\phi$  13.50 -13.77 THROUGH COUNTERBORED 20-22 x 16 DEEP EQUA-SPACED ON A 150 PCD.

SECTION A-A



6 HOLES DRILLED  $\phi$  10.2 THROUGH, TAPPED M12 x 30 MIN.DEPTH EQUA-SPACED ON A 150 PCD.

TYPE A43RASB BOLTED SOCKET.  
Baseefa09ATEX0121U  
IECEX BAS 09.0048U

REF. No.	ITEM No.	DESCRIPTION	No. OFF
1	924525	AUXILLIARY CONTACT PIN ASSEMBLY	2
2	124565	BACKUP INSULATOR	1
3	125128	CIRCLIP	1
4	228029	GRUBSCREW M6 - FLAT POINT	1
5	924611-	MAINS CONTACT PIN ASSEMBLY - SEE NOTE 4.	3
6	124579	O RING	1
7	924526	PILOT CONTACT PIN ASSEMBLY	1
8	218190X	SOCKET HEAD CAP SCREW - M10 X 30 LONG	1
9	124564E	SOCKET INSULATOR - MACHINED	1
10	256009S	SPRING WASHER - 10 I.D	1
11	125130	TYPE A43RASB SOCKET BODY	1
12	125129	TYPE A43RASB SOCKET EARTH PLATE	1

DRAWING No.	ISSUE No.
CP298	1

CERTIFICATE RELATED DRAWING  
NO MODIFICATIONS PERMITTED WITHOUT THE APPROVAL OF THE TECHNICAL MANAGER

DO NOT SCALE

DIMENSIONS IN MILLIMETRES (mm)  
MAXIMUM MACHINED SURFACE  
TEXTURE  $\mu$ m Ra 3.2  
MACHINE WHERE MARKED THUS ✓  
ANGULAR TOLERANCES  $\pm 1/2^\circ$   
DIMENSIONAL TOLERANCES UNLESS OTHERWISE STATED  
UPTO 6  $\pm 0.1$   
OVER 6 UPTO 30  $\pm 0.2$   
OVER 30 UPTO 100  $\pm 0.3$   
OVER 100 UPTO 300  $\pm 0.5$   
OVER 300  $\pm 0.8$

TEST No.	PROCESS No.
200	---
DRAWN	AER
DATE	4/7/11
CHECKED	4/7/11 AER
APPROVED	4/7/11 AER
SCALE	1:4

**1** DCR DRN 4/7/11 AER  
CHK 4/7/11 AERAPP 4/7/11 AER  
DRAWING UPDATED.  
NOW 5 SHEETS.

DETAILS OF TYPE A43RASB BOLTED SOCKET.

**Victor** Victor Products Limited  
New York Way,  
Newcastle upon Tyne,  
NE27 0QF, United Kingdom.

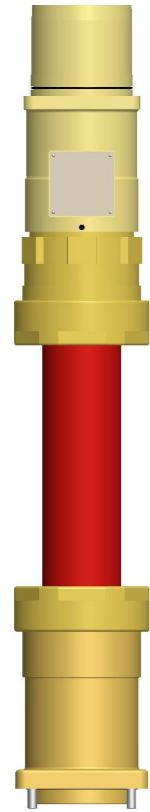
DRAWING No.	ISSUE No.
SHEET 4 OF 6	
CP298	1



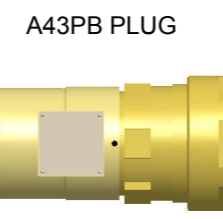
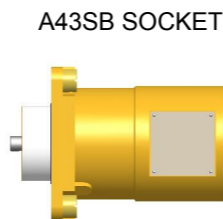
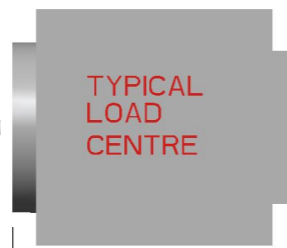
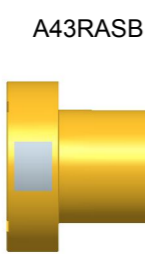
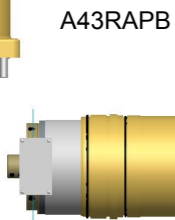
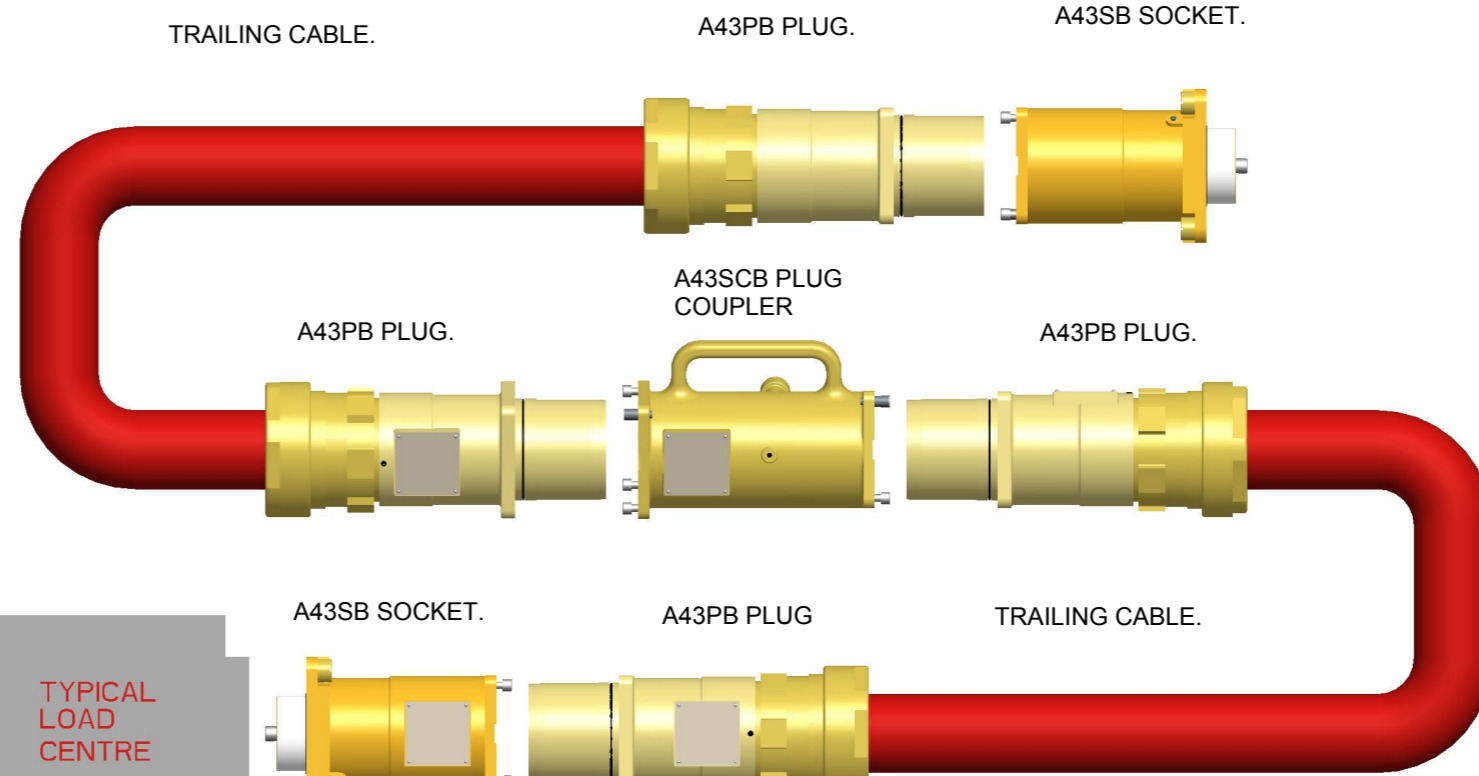
A  
B  
C  
D  
E  
F  
G  
H



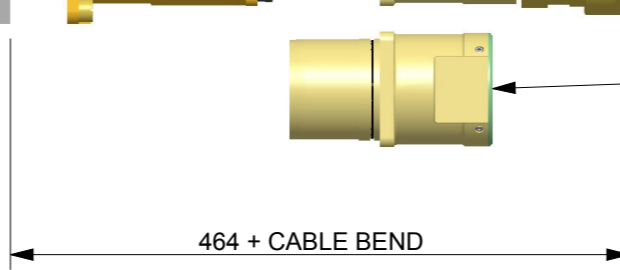
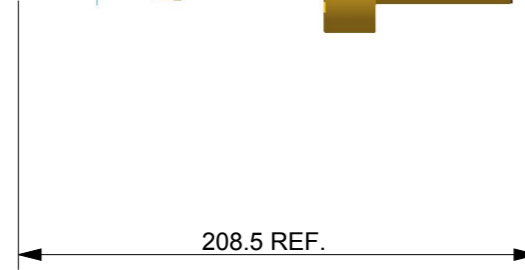
A43PB PLUG FOR CONNECTION TO A43SCB OR A43SB.



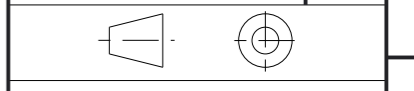
TRAILING CABLE.



A43BPB BLANKING OR A43TBP TEST PLUG FOR FITMENT TO A A43SB SOCKET OR A43SCB PLUG COUPLER. NOTE: NOT FOR USE WITH A43RASB.



DRAWING No.	ISSUE No.
CP298	1



CERTIFICATE RELATED DRAWING  
NO MODIFICATIONS PERMITTED WITHOUT THE APPROVAL OF THE TECHNICAL MANAGER

**DO NOT SCALE**

DIMENSIONS IN MILLIMETRES (mm)  
MAXIMUM MACHINED SURFACE  
TEXTURE  $\mu\text{m Ra } 3.2$   
MACHINE WHERE MARKED THUS ✓  
ANGULAR TOLERANCES  $\pm 1/2^\circ$   
DIMENSIONAL TOLERANCES UNLESS OTHERWISE STATED  
UPTO 6  $\pm 0.1$   
OVER 6 UPTO 30  $\pm 0.2$   
OVER 30 UPTO 100  $\pm 0.3$   
OVER 100 UPTO 300  $\pm 0.5$   
OVER 300  $\pm 0.8$

TEST No.	PROCESS No.
200	---
DRAWN	AER
DATE	16/12/11
CHECKED	16/12/11 AER
APPROVED	16/12/11 AER
SCALE	1:4

0	DCR	DRN	16/12/11	AER	1	DCR	DRN	16/8/12	AER	
CHK	16/12/11	AERAPP	16/12/11	AER	1	CHK	16/8/12	AERAPP	16/8/12	AER

SHEET 5 INTRODUCED.

A43RA PLUG AND SOCKET DIAGRAM ADDED.

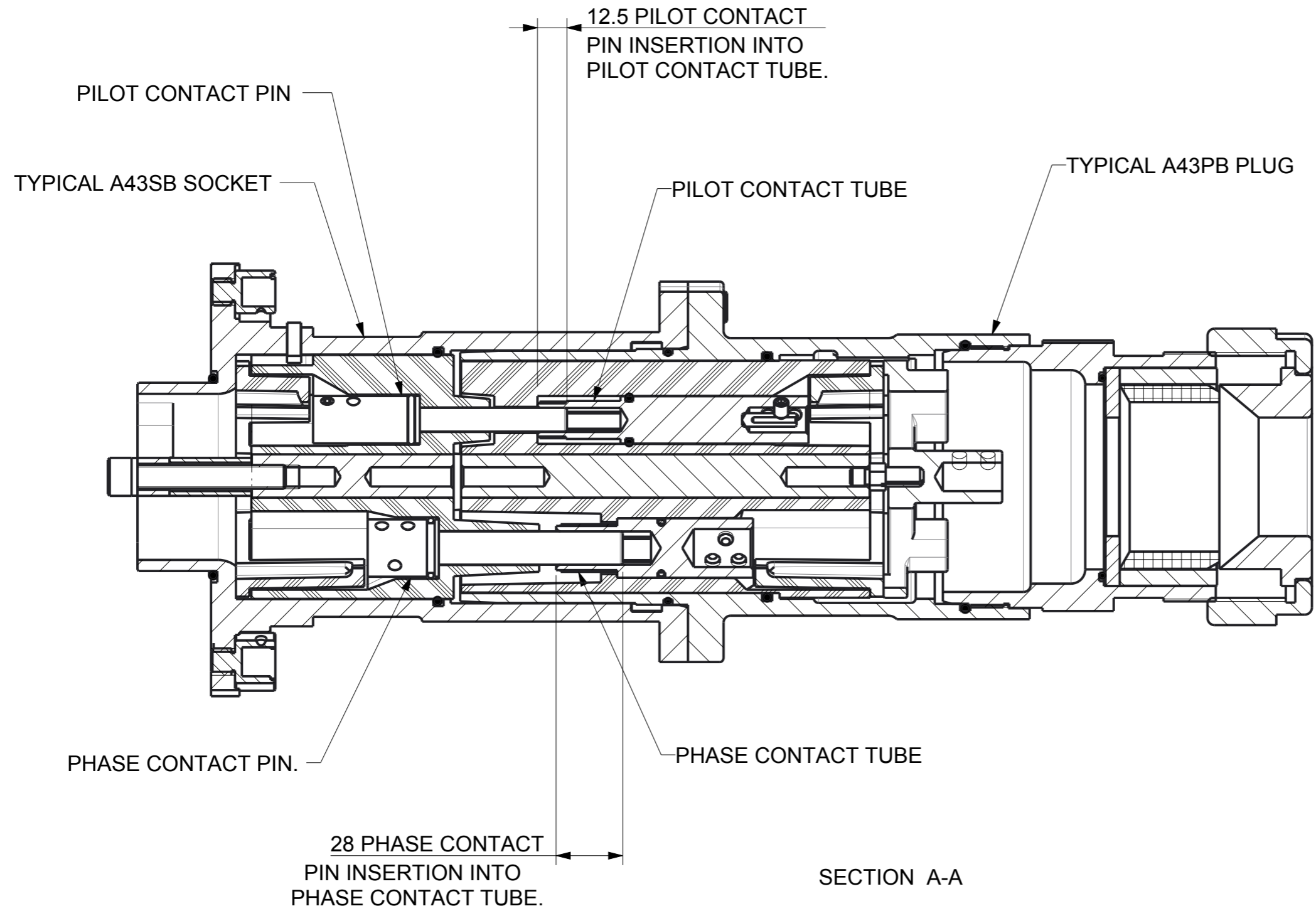
TYPICAL CABLE LAYOUTS SHOWING COMBINATION OF UNITS FROM THE A43 RANGE OF CONNECTORS.

**Victor** Victor Products Limited  
New York Way,  
Newcastle upon Tyne,  
NE27 0QF, United Kingdom.

DRAWING No.	ISSUE No.
SHEET 5 OF 6	
CP298	1

A  
B  
C  
D  
E  
F  
G  
H

A  
B  
C  
D  
E  
F  
G  
H



DRAWING No.	ISSUE No.
CP298	
CERTIFICATE RELATED DRAWING	
NO MODIFICATIONS PERMITTED WITHOUT THE APPROVAL OF THE TECHNICAL MANAGER	
<b>DO NOT SCALE</b>	
DIMENSIONS IN MILLIMETRES (mm)	
MAXIMUM MACHINED SURFACE	
TEXTURE $\mu\text{m Ra } 3.2$	
MACHINE WHERE MARKED THUS ✓	
ANGULAR TOLERANCES $\pm 1/2^\circ$	
DIMENSIONAL TOLERANCES UNLESS OTHERWISE STATED	
UPTO 6 $\pm 0.1$	
OVER 6 UPTO 30 $\pm 0.2$	
OVER 30 UPTO 100 $\pm 0.3$	
OVER 100 UPTO 300 $\pm 0.5$	
OVER 300 $\pm 0.8$	
TEST No.	PROCESS No.
200	---
DRAWN	AER
DATE	21/11/12
CHECKED	21/11/12 AER
APPROVED	21/11/12 HD
SCALE	1:4

0	DCR	DRN	21/11/12	AER
CHK	21/11/12	AERAPP	21/11/12	HD

SHEET 6 ADDED.

DETAILS OF CONTACT PIN INSERTION INTO CONTACT TUBES WHEN FULLY ASSEMBLED.

**Victor** Victor Products Limited  
New York Way,  
Newcastle upon Tyne,  
NE27 0QF, United Kingdom.

DRAWING No.	ISSUE No.
SHEET 6 OF 6	
CP298	