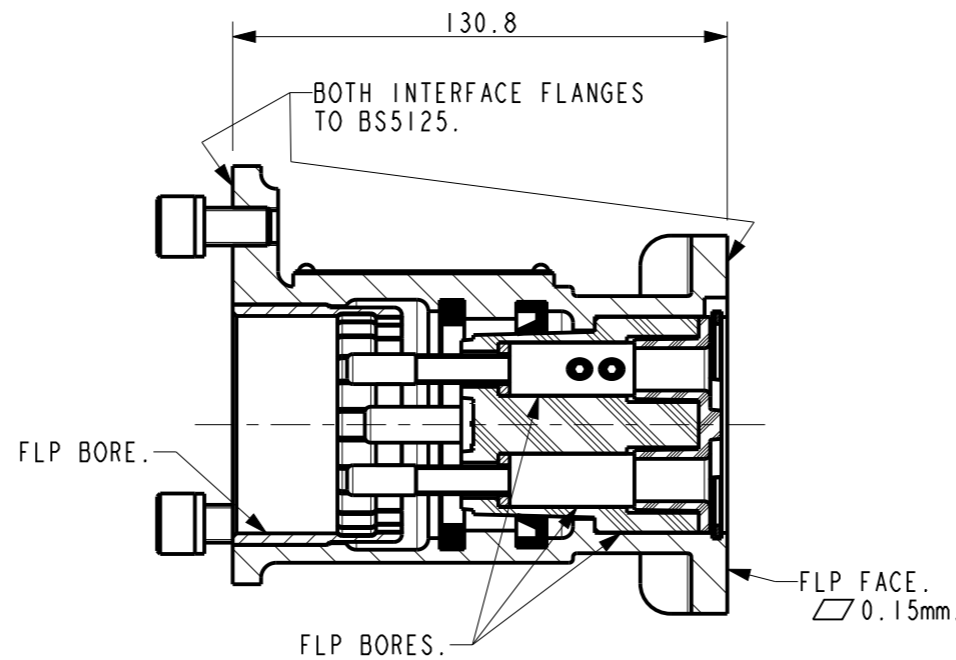
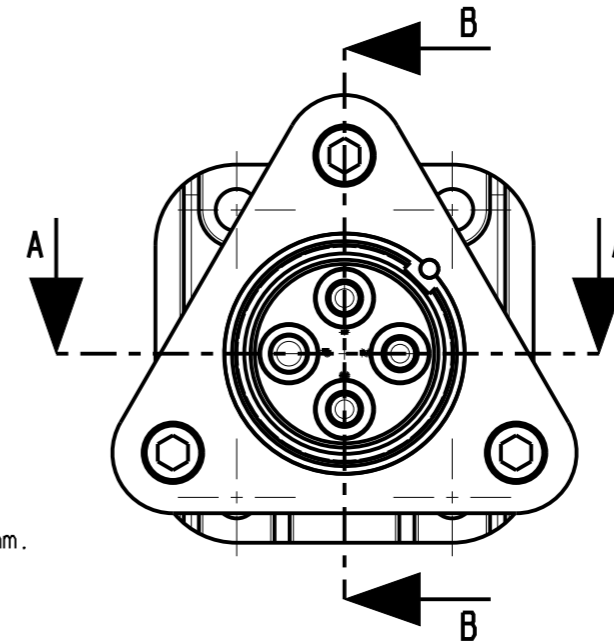


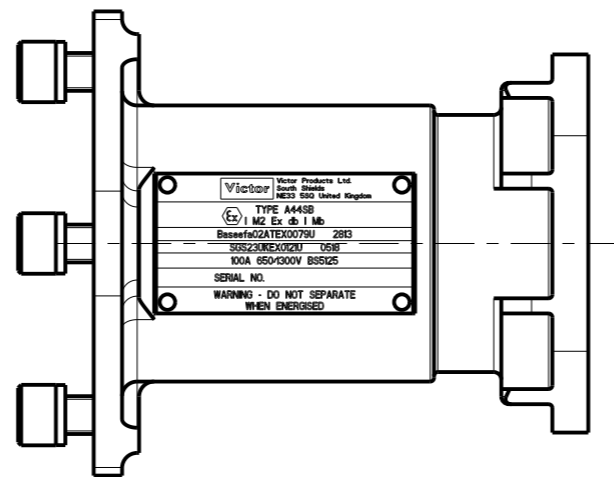
4 HOLES FOR M10 SOCKET HEAD CAP SCREWS.



SECTION B-B



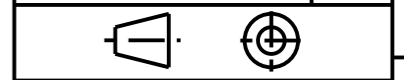
SECTION A-A



SEE SHEET 2 FOR PLUG DETAILS.  
SEE SHEET 3 FOR INTERFACE DETAILS.

REF. No.	ITEM No.	DESCRIPTION	No. OFF
1	925050	A44SB SOCKET BODY ASSEMBLY - FLP	1
2	123002E	INSULATOR - FLP	1
3	123003	INSULATOR CAP	1
4	924671-	MAINS CONTACT PIN ASSEMBLY - FLP	3
5	124672	SEAL FOR CONTACT PIN	3
6	923016W	PILOT CONTACT PIN ASSEMBLY - FLP	1
7	123891	'O' RING	1
8	124140	GASKET	1
9	123004	INTERFACE SEAL	1
10	280012A	CIRCLIP	1
11	218116X	INTERFACE CONNECTING SCREW	3
12	256009S	SPRING WASHER	3

DRAWING No.	ISSUE No.
CP285	2



CERTIFICATE RELATED DRAWING

NO MODIFICATIONS PERMITTED WITHOUT THE APPROVAL OF THE TECHNICAL MANAGER

DO NOT SCALE

DIMENSIONS IN MILLIMETRES (mm)  
MAXIMUM MACHINED SURFACE  
TEXTURE um Ra 3.2  
MACHINE WHERE MARKED THUS ✓

ANGULAR TOLERANCES ±1/2°

DIMENSIONAL TOLERANCES UNLESS OTHERWISE STATED

UPTO 6	±0.1
OVER 6 UPTO 30	±0.2
OVER 30 UPTO 100	±0.3
OVER 100 UPTO 300	±0.5
OVER 300	±0.8

TEST No.	PROCESS No.
200	---

DRAWN	AER
-------	-----

DATE	30/7/09
------	---------

CHECKED	30/7/09 AER
---------	-------------

APPROVED	30/7/09 AER
----------	-------------

SCALE	1:2
-------	-----

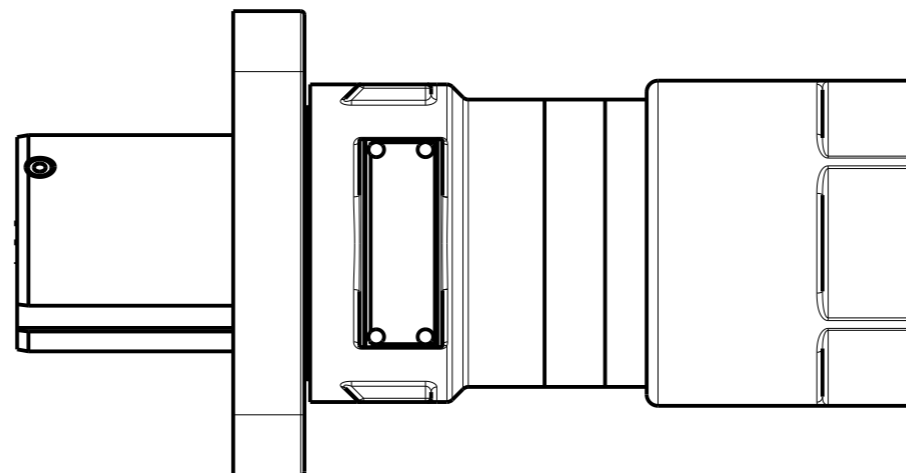
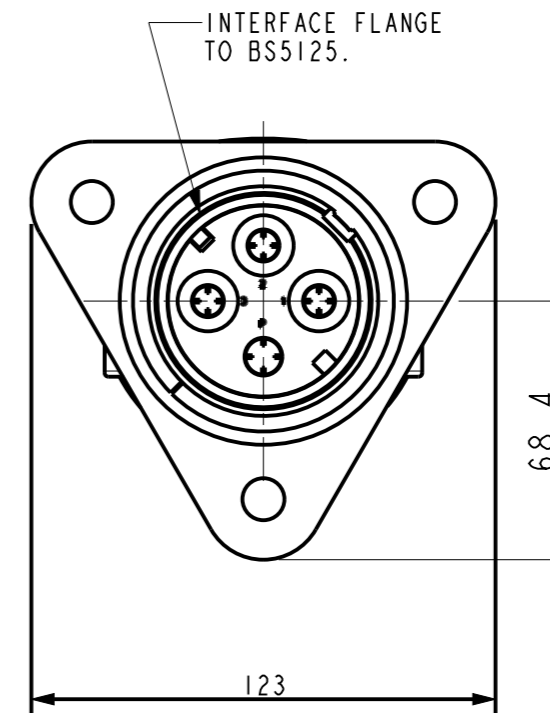
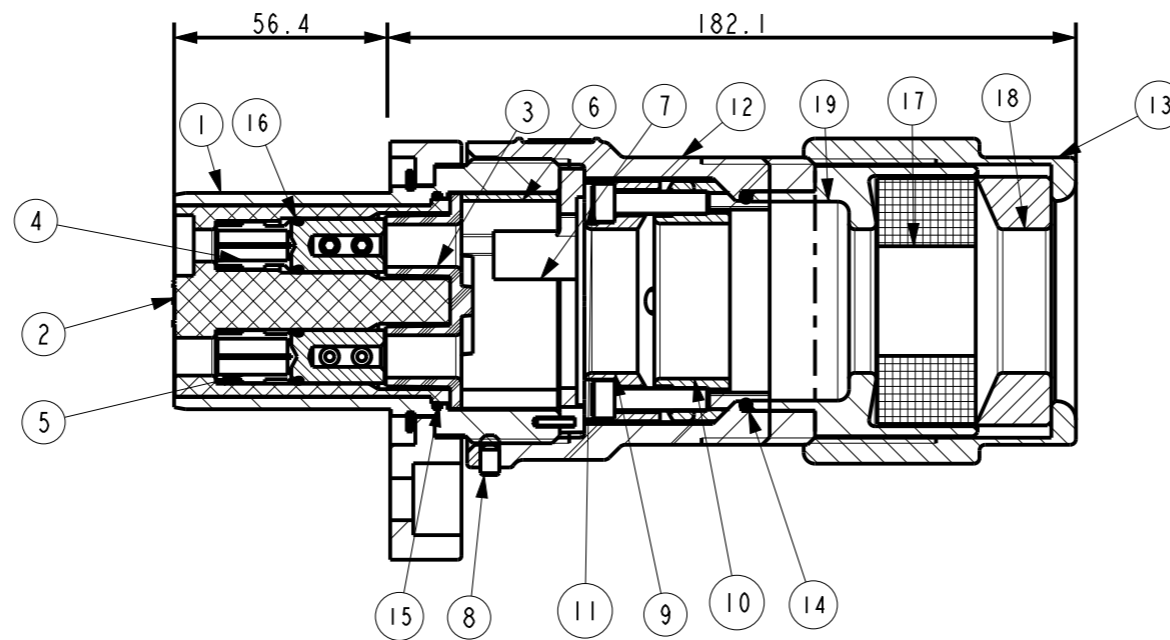
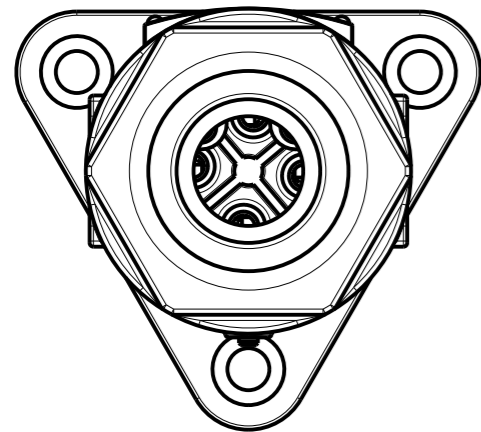
2	DCR 2009	DRN	30/7/09	AER
	CHK	30/7/09	AER	APP
			30/7/09	AER

REDRAWN.

TYPE A44SB BOLTED SOCKET 100A 650/1300V

**Victor** Victor Products Limited  
Unit 3A, Tyne Dock East Side,  
Port of Tyne, South Shields,  
Tyne and Wear, NE33 5SQ,  
United Kingdom.

DRAWING No.	ISSUE No.
SHEET 1 OF 3	
CP285	2

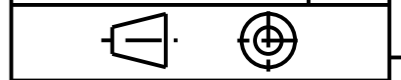


A SELECTION OF CABLE SEALING RINGS, CLAMP WASHERS AND CLAMP RING BODY ARE AVAILABLE TO COVER CABLE SIZES 17 - 52mm DIA.

SEE SHEET 1 FOR SOCKET DETAILS.  
SEE SHEET 3 FOR INTERFACE DETAILS.

REF. No.	ITEM No.	DESCRIPTION	No. OFF
1	924463	BOLTED PLUG BARREL ASSEMBLY	1
2	123001A	PLUG INSULATOR	1
3	123003	INSULATOR CAP	1
4	923007W	MAINS CONTACT TUBE - 16mm <sup>2</sup> - GRUB	3
5	923008W	PILOT CONTACT TUBE - 16mm <sup>2</sup> - GRUB	1
6	123013	DISTANCE PIECE	1
7	923006	SCREEN CLAMP ASSEMBLY	1
8	227010S	PLUG BARREL GRUBSCREW	1
9	123031	ARMOUR CLAMP SEAT	1
10	123022	ARMOUR CLAMP	1
11	218159A	ARMOUR CLAMP SCREWS	4
12	923019W	BOLTED PLUG BODY ASSEMBLY	1
13	124422	GLAND NUT	1
14	124136	'O' RING	1
15	124133	'O' RING	1
16	124132	'O' RING	4
17	124423-	CABLE SEALING RING - SEE NOTE	1
18	124427-	CLAMPING WASHER - SEE NOTE	1
19	124426-	CABLE SEALING RING BODY - SEE NOTE	1

DRAWING No.	ISSUE No.
CP285	2



CERTIFICATE RELATED DRAWING

NO MODIFICATIONS PERMITTED WITHOUT THE APPROVAL OF THE TECHNICAL MANAGER

DO NOT SCALE

DIMENSIONS IN MILLIMETRES (mm)  
MAXIMUM MACHINED SURFACE  
TEXTURE um Ra 3.2  
MACHINE WHERE MARKED THUS ✓

DIMENSIONAL TOLERANCES UNLESS OTHERWISE STATED

TEST No.	PROCESS No.
----------	-------------

200	---
-----	-----

DRAWN	AER
-------	-----

DATE	30/7/09
------	---------

CHECKED	30/7/09 AER
---------	-------------

APPROVED	30/7/09 AER
----------	-------------

SCALE	1:2
-------	-----

2	DCR 2009	DRN	30/7/09	AER	
	CHK	30/7/09	AER APP	30/7/09	AER

DETAILS WERE SHOWN ON CP286

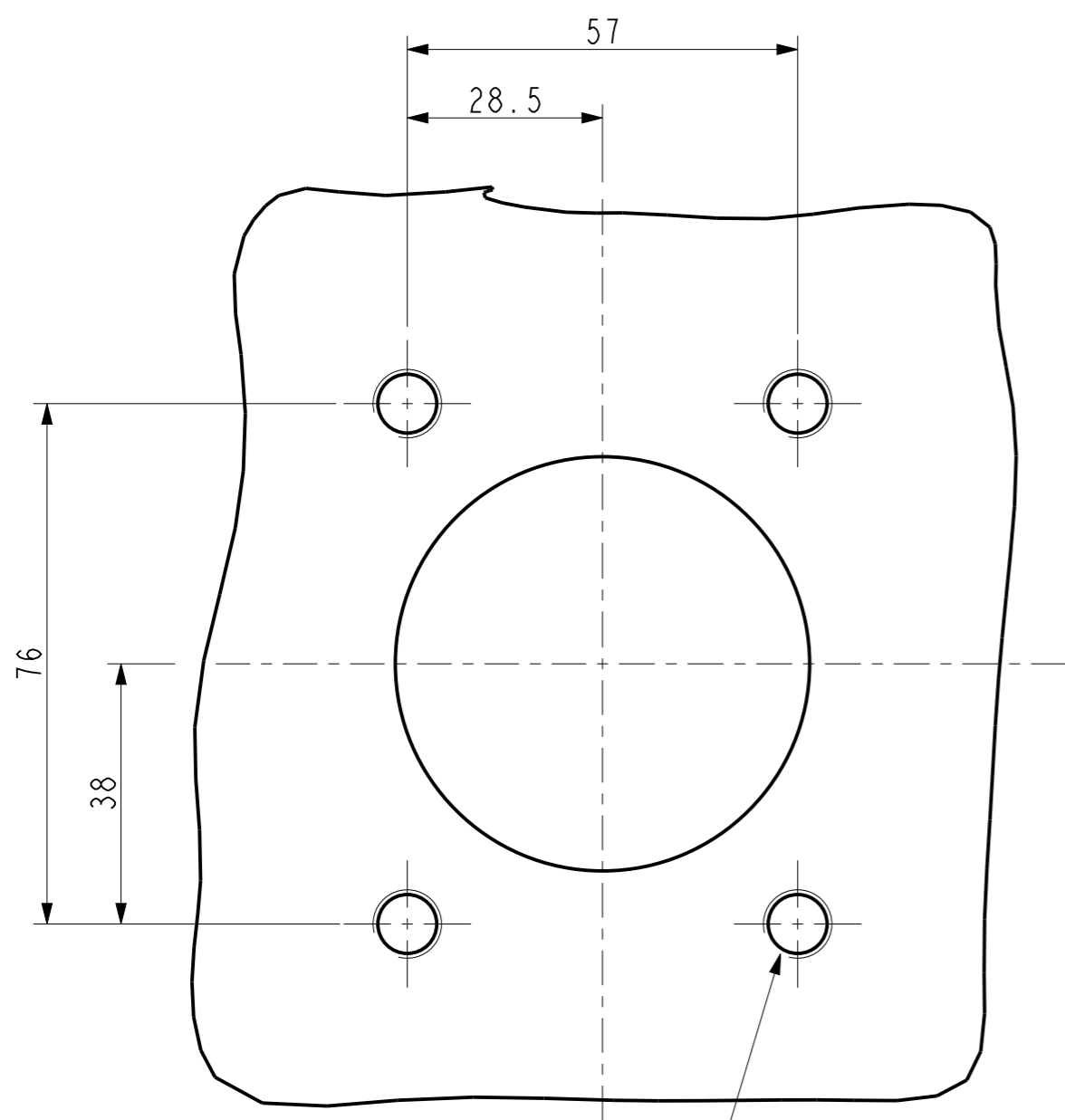
TYPE A44PB BOLTED PLUG - 100A 650/1100V

**Victor**

Victor Products Limited  
Unit 3A, Tyne Dock East Side,  
Port of Tyne, South Shields,  
Tyne and Wear, NE33 5SQ,  
United Kingdom.

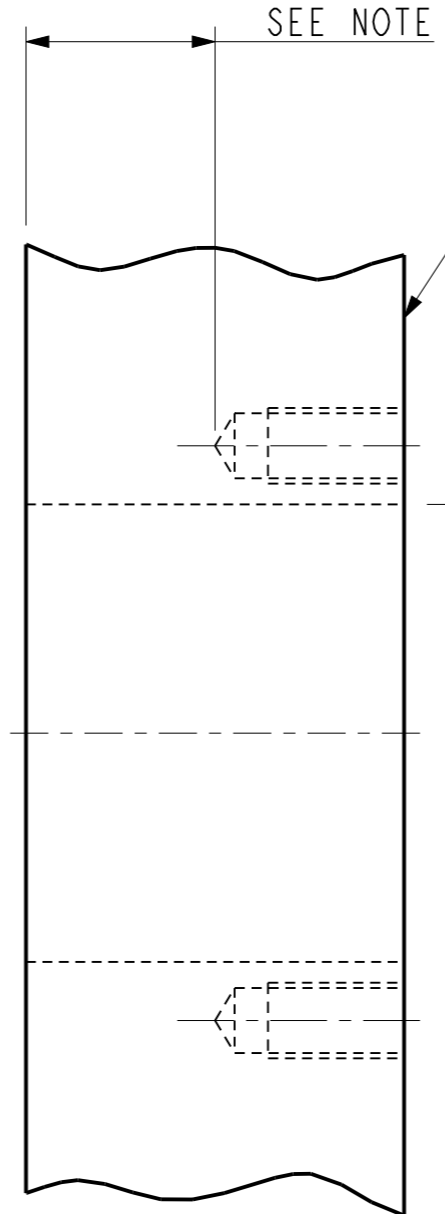
DRAWING No.	ISSUE No.
SHEET 2 OF 3	
CP285	2

A  
B  
C  
D  
E  
F  
G  
H



4 HOLES AS SHOWN,  
M10 x 1.5p - 6H WITH  
A MINIMUM LENGTH OF 18  
FULL LENGTH THREADS.

SEE SHEET 1 FOR SOCKET DETAILS.  
SEE SHEET 2 FOR PLUG DETAILS.



NOTE: THERE MUST BE SUFFICIENT WALL  
THICKNESS BEHIND THE DRILL POINT TO  
SATISFY THE NOTIFIED CERTIFICATION AUTHORITY.

DRAWING No.	ISSUE No.
CP285	1

CERTIFICATE RELATED DRAWING  
NO MODIFICATIONS PERMITTED  
WITHOUT THE APPROVAL OF  
THE TECHNICAL MANAGER

DO NOT SCALE

DIMENSIONS IN MILLIMETRES (mm)  
MAXIMUM MACHINED SURFACE  
TEXTURE  $\mu m Ra$  3.2  
MACHINE WHERE MARKED THUS ✓  
ANGULAR TOLERANCES  $\pm 1/2^\circ$   
DIMENSIONAL TOLERANCES  
UNLESS OTHERWISE STATED  
UPTO 6  $\pm 0.1$   
OVER 6 UPTO 30  $\pm 0.2$   
OVER 30 UPTO 100  $\pm 0.3$   
OVER 100 UPTO 300  $\pm 0.5$   
OVER 300  $\pm 0.8$

TEST No.	PROCESS No.
200	---
DRAWN	AER
DATE	27/7/09
CHECKED	27/7/09 AER
APPROVED	27/7/09 AER
SCALE	1:2

DCR 2009	DRN 27/7/09	AER
CHK 27/7/09	AER APP 27/7/09	AER

WAS SHOWN ON SHEET 2.

BS5125 INTERFACE FLANGE



Victor Products Limited  
Unit 3A, Tyne Dock East Side,  
Port of Tyne, South Shields,  
Tyne and Wear, NE33 5SQ,  
United Kingdom.

DRAWING No.	ISSUE No.
SHEET 3 OF 3	1
CP285	