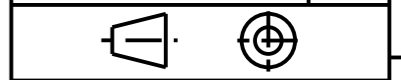


STYLE No.	REF. No. 2	DESCRIPTION
MPV09960523A	MP50899	SEMI-SCREENED INSULATOR WITH PLUG IN CONTACT TUBES TO ACCEPT ADATOR PINS.
MPV0960524A***	MP50902*	SEMI-SCREENED INSULATOR & CRIMPED CONTACT TUBES.
MPV09960525A***	MP50898*	SEMI-SCREENED INSULATOR & GRUBSCREWED CONTACT TUBES.
MPV09960527A***	MP50902*	UN-SCREENED INSULATOR, CENTRE PILOT, CRIMPED CONTACT TUBES.
MPV09960528A***	MP50898*	UN-SCREENED INSULATOR, CENTRE PILOT & GRUBSCREWED CONTACT TUBES.

REF. No.	ITEM No.	DESCRIPTION	No. OFF
1	MP50882A	6.6kV AIR FILLED ADAPTOR BODY - FLP	1
2	SEE NOTE 1.	CONTACT TUBE ASSEMBLY	3
3	MP50903A	INSULATOR ASSEMBLY FLP - SCREENED	1
	MP50917	INSULATOR ASSEMBLY FLP - PILOT	1
4	MP4513	LOCKNUT - CONTACT TUBE	3
5	GPC12-18	M5 SOCKET HEAD CAP SCREW - FLP	3
6	GPC10-7	M10 NUT	6
7	MP38314104	PROTECTION PLATE - NOT SHOWN	2
8	GPC11-19	M10 x 45 LONG HEX. HEAD SCREW	6
9	GP256009	10 I.D. SPRING WASHER	6
10	MP124787	PILOT CONTACT TUBE ASSEMBLY - FLP	1
11	GPC21-9	CIRCLIP	1

DRAWING No.	ISSUE No.
CP295	0



CERTIFICATE RELATED DRAWING

NO MODIFICATIONS PERMITTED WITHOUT THE APPROVAL OF THE TECHNICAL MANAGER

DO NOT SCALE

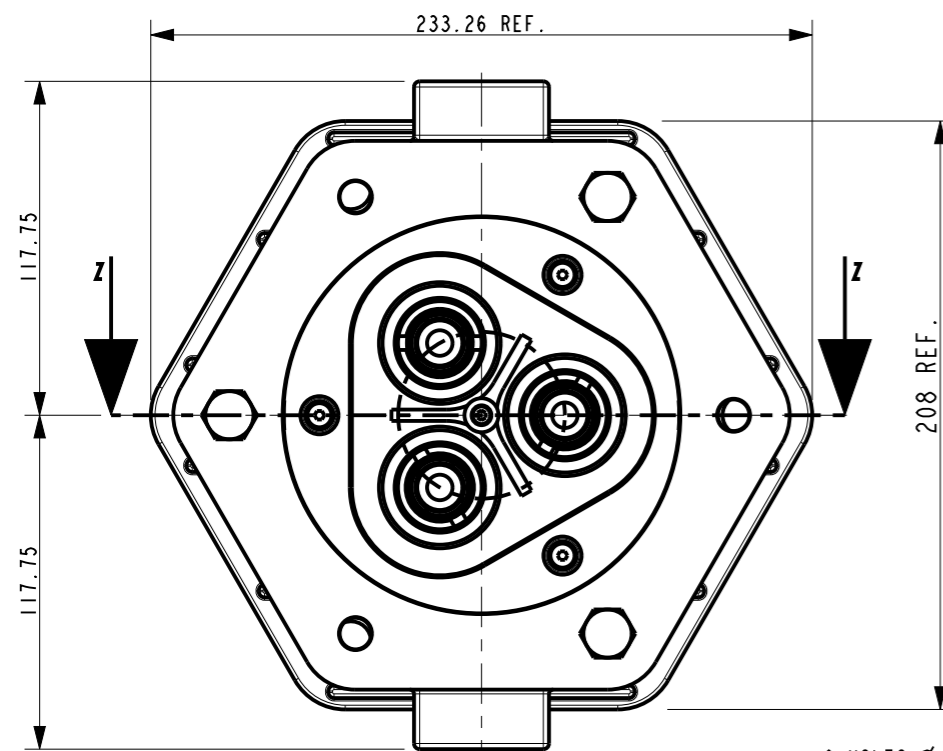
DIMENSIONS IN MILLIMETRES (mm)
 MAXIMUM MACHINED SURFACE
 TEXTURE $\mu m R_a 3.2$
 MACHINE WHERE MARKED THUS ✓

ANGULAR TOLERANCES $\pm 1/2^\circ$

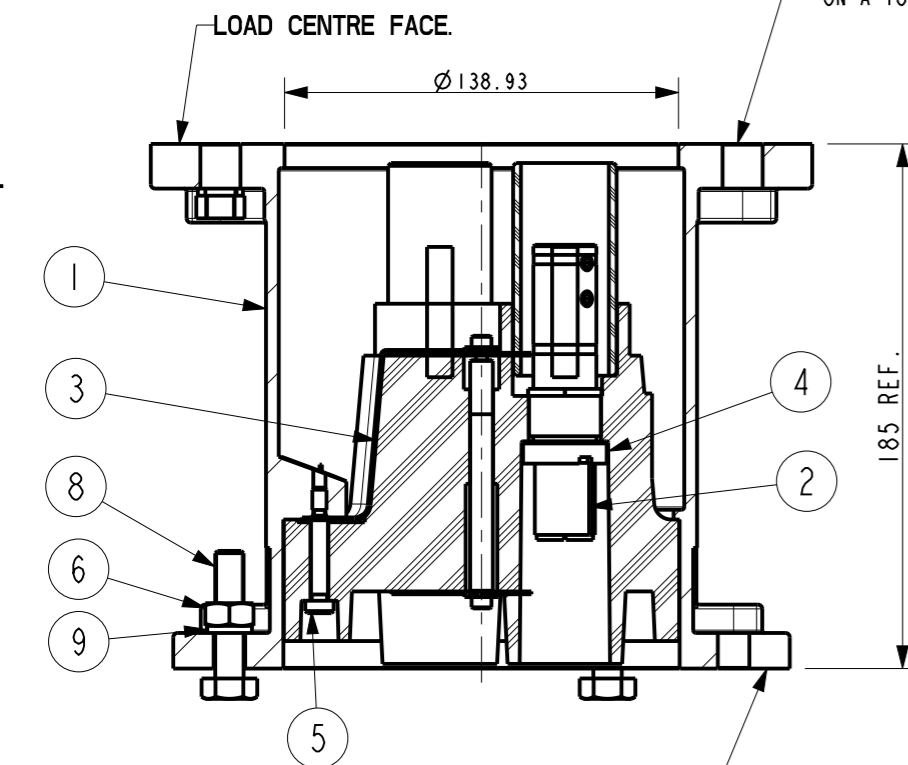
DIMENSIONAL TOLERANCES UNLESS OTHERWISE STATED	
UPTO 6	± 0.1
OVER 6 UPTO 30	± 0.2
OVER 30 UPTO 100	± 0.3
OVER 100 UPTO 300	± 0.5
OVER 300	± 0.8

TEST No.	PROCESS No.
---	---

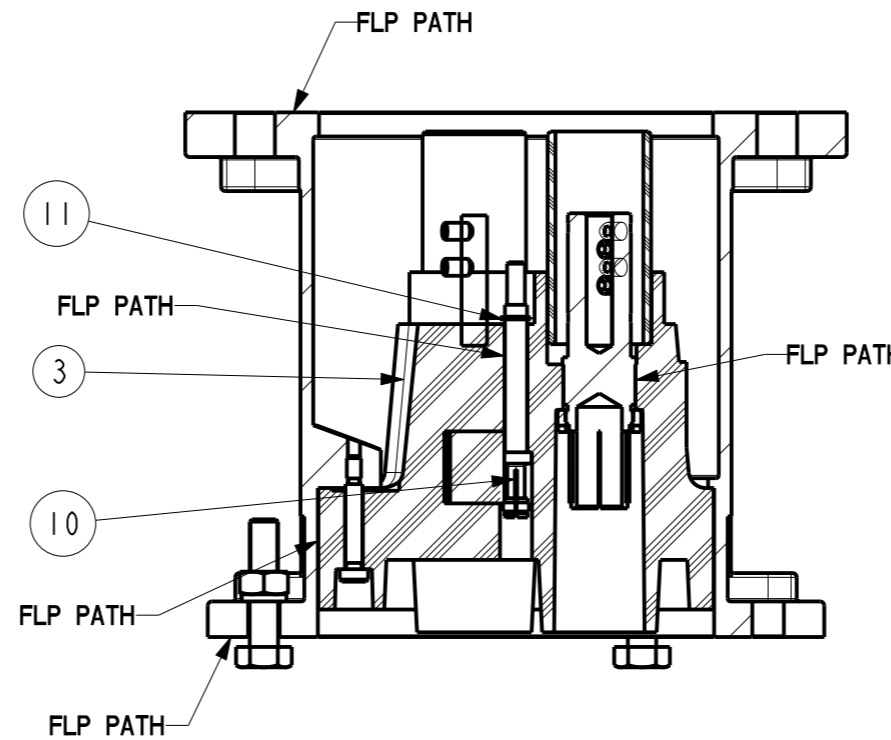
DRAWN	AER
DATE	3/11/10
CHECKED	3/11/10 AER
APPROVED	3/11/10 HD
SCALE	3:8



6 HOLES $\phi 14.00/14.27$ EQUA-SPACED ON A 184 P.C.D - SEE SHEET 2.



SECTION Z-Z SHOWING SEMI-SCREENED INSULATOR.



SECTION Z-Z SHOWING UN-SCREENED INSULATOR WITH CENTRE PILOT FITTED.

NOTE 1, CRIMPED AND GRUBSCREWED MANUFACTURED TO SUIT CUSTOMERS CONDUCTOR SIZE.

STYLES MPV09960523A WILL REQUIRE 3 OFF ADDITIONAL ADAPTOR PINS, DRILLED TO SUIT CONDUCTOR SIZE.

NOTE 2, THE STYLE Nos. ARE SUFFIXED WITH THE CONDUCTOR SIZE.
 e.g.s. MPV09960524A70 - 70mm² CONDUCTOR
 MPV09960527A185 - 185mm² CONDUCTOR

ADAPTOR DIMENSIONED TO BS3905:1995

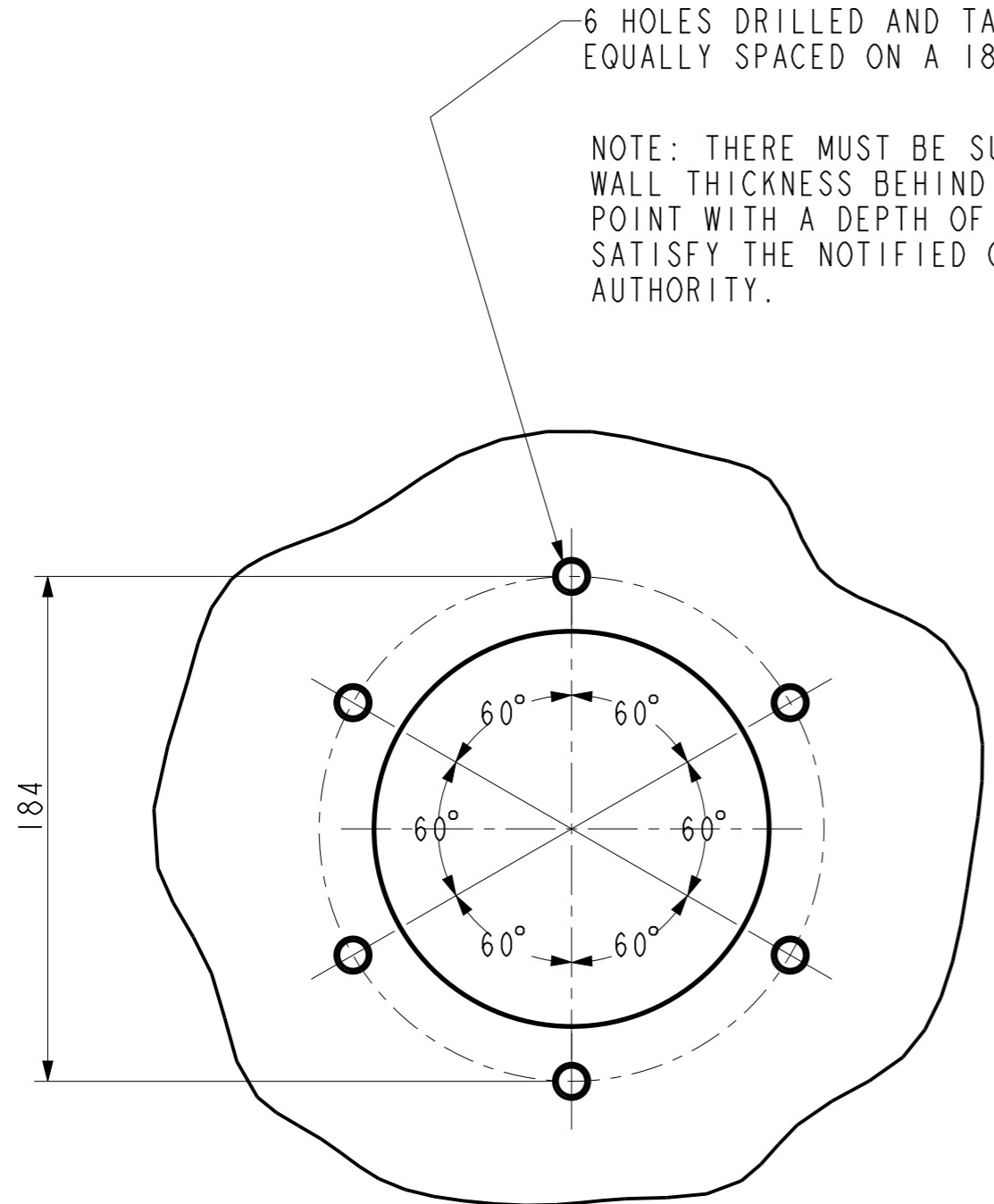
DCR	DRN	3/11/10	AER
CHK	APP	3/11/10	HD

DRAWING INTRODUCED.

6.6kV AIR FILLED ADAPTORS

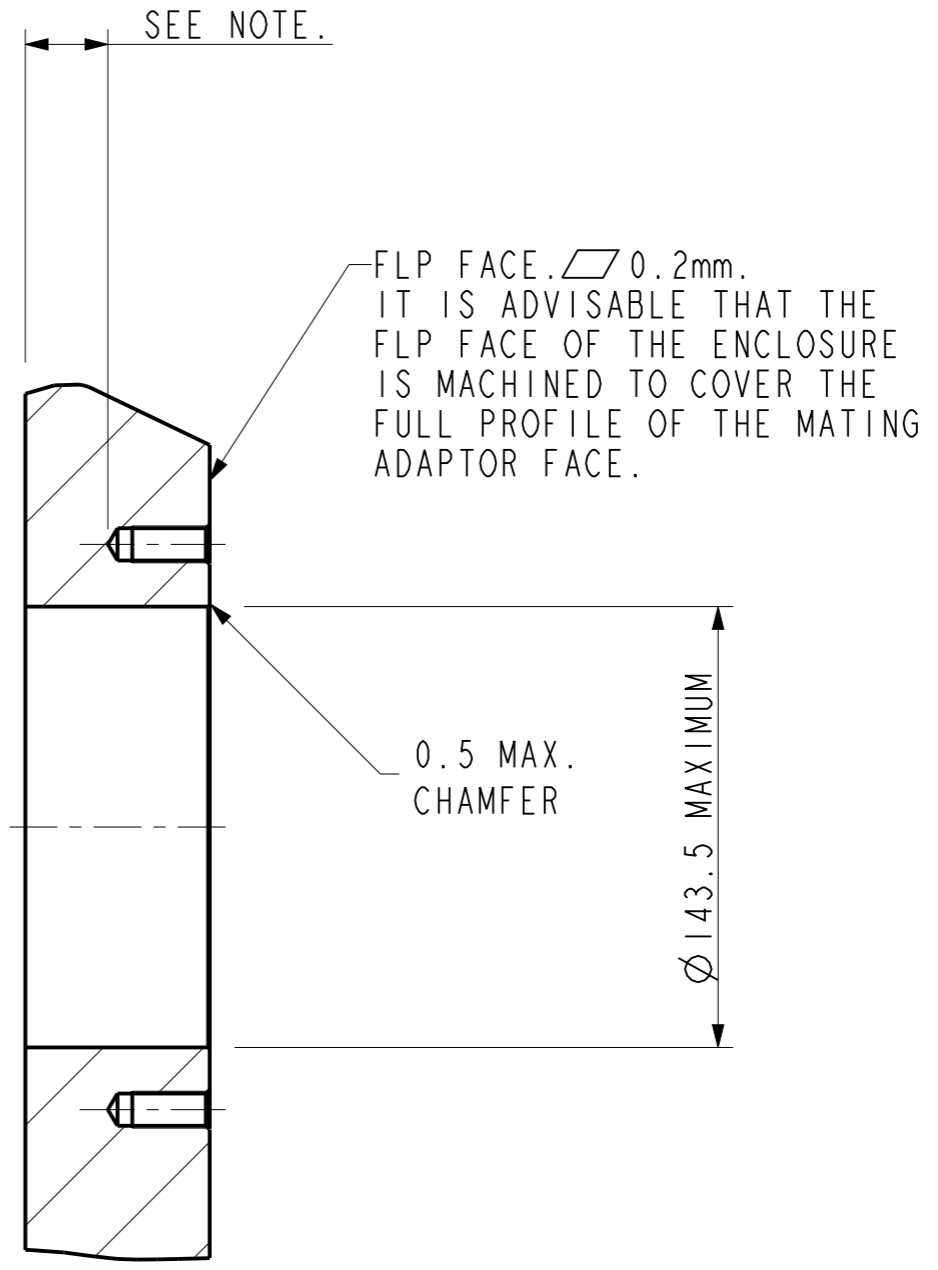
Victor Victor Products Limited
 Unit 3A, Tyne Dock East Side,
 Port of Tyne, South Shields,
 Tyne and Wear, NE33 5SQ,
 United Kingdom.

DRAWING No.	ISSUE No.
SHEET 1 OF 2	0
CP295	



6 HOLES DRILLED AND TAPPED,
EQUALLY SPACED ON A 184 P.C.D.

NOTE: THERE MUST BE SUFFICIENT
WALL THICKNESS BEHIND THE DRILL
POINT WITH A DEPTH OF THREAD TO
SATISFY THE NOTIFIED CERTIFICATION
AUTHORITY.



SEE NOTE.

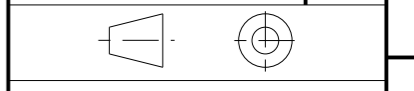
FLP FACE. 0.2mm.
IT IS ADVISABLE THAT THE
FLP FACE OF THE ENCLOSURE
IS MACHINED TO COVER THE
FULL PROFILE OF THE MATING
ADAPTOR FACE.

0.5 MAX.
CHAMFER

Ø 143.5 MAXIMUM

SECTION Z-Z

DRAWING No.	ISSUE No.
CP295	0



CERTIFICATE RELATED DRAWING

NO MODIFICATIONS PERMITTED
WITHOUT THE APPROVAL OF
THE TECHNICAL MANAGER

DO NOT SCALE

DIMENSIONS IN MILLIMETRES (mm)
MAXIMUM MACHINED SURFACE
TEXTURE $\mu m Ra 3.2$
MACHINE WHERE MARKED THUS ✓

ANGULAR TOLERANCES $\pm 1/2^\circ$

DIMENSIONAL TOLERANCES UNLESS OTHERWISE STATED	
UPTO 6	± 0.1
OVER 6 UPTO 30	± 0.2
OVER 30 UPTO 100	± 0.3
OVER 100 UPTO 300	± 0.5
OVER 300	± 0.8

TEST No.	PROCESS No.
200	---

DRAWN	AER
-------	-----

DATE	1/3/11
------	--------

CHECKED	1/3/11 AER
---------	------------

APPROVED	1/3/11 AER
----------	------------

SCALE	3:8
-------	-----

DCR	DRN	1/3/11	AER
CHK	1/3/11	AER	APP
SHEET 2 ADDED			

TYPICAL 6.6kV INTERFACE FLANGE
MOUNTING DETAILS

Victor Victor Products Limited
New York Way,
Newcastle upon Tyne,
NE27 0QF, United Kingdom.

DRAWING No.	ISSUE No.
SHEET 2 OF 2	
CP295	0