





SPECIFICATION

- ▼ Utilises Latest LED Technology.
- ▼ Voltage ranges – 12V AC/DC or 24V AC/DC
- ▼ Cable Entries Options available include
Threaded Entry up to 2 x M32 or
Flanged/Spigot Entry 2 x 25.4mm Diameter.
Note: Glands can be supplied on request
- ▼ Wide range of beam patterns available.
- ▼ Clear or Frosted Glass available.
- ▼ Weight = 8kg
- ▼ Installation leaflet ML193080 is supplied with each luminaire.
- ▼ Ingress protection to IP65

FEATURES & BENEFITS

- ▼ White 'Headlight' and Red 'Taillight' in one unit.
- ▼ Low Maintenance
- ▼ Long LED Lamp Life > 100,000 hours (temperature dependant)
- ▼ High Resistance to Vibration & Shock
- ▼ Low Power Consumption – 0.5A @ 24V
1.0A @ 12V.
- ▼ Greater light output than 70W halogen equivalent.
- ▼ Terminals – up to 4mm².
- ▼ Provision for internal and external earth.
- ▼ Compact Design.
- ▼ Simple installation with two mounting points suitable for M10 fixings.
- ▼ Can be mounted in any orientation.

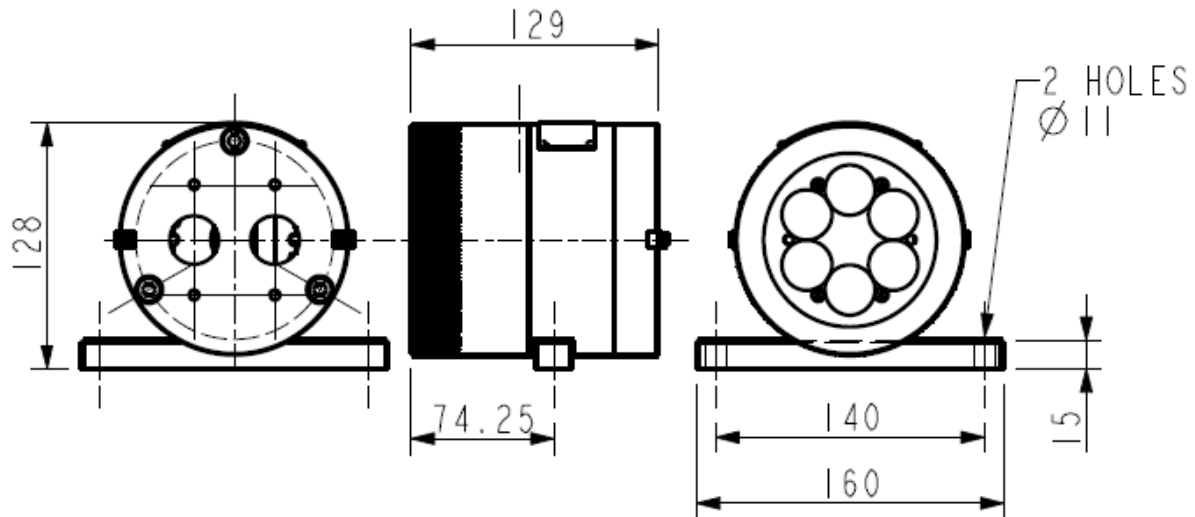
STANDARDS & CERTIFICATION

EN IEC 60079-0, EN 60079-1
 ATEX Certificate No. ITS08ATEX15815
 I M2 Ex db I Mb IP65
 UKEX Certificate No. ITS22UKEX0514
 I M2 Ex db I Mb IP65
 IECEx Certificate No. IECEx ITS 08.0012
 Ex db I Mb IP65
 Ambient Temperature range: -20°C To +45°C

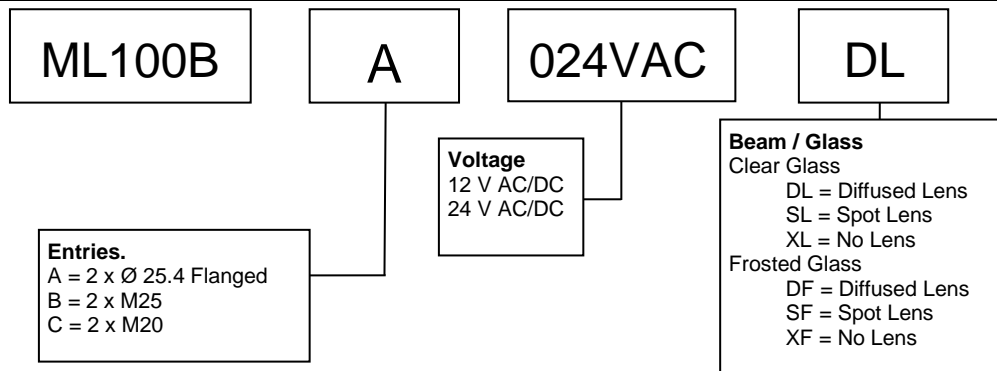


DIMENSIONS

All dimensions in millimetres.



TYPICAL ORDERING REFERENCES.



EXAMPLE: ML100BA012VDCDL = ML100 LED Machine Light in Brass suitable to take 2 off 25.4 mm diameter flanged glands. Voltage is 12V AC/DC with Diffused lens fitted, clear glass.

For more information on possible variants please contact Victor Sales:
Tel: 0191 280 8000, Email: sales@victor.co.uk



Victor

VICTOR PRODUCTS LIMITED

Unit 3A, Tyne dock East Side, Port of Tyne, South Shields NE33 5SQ United Kingdom
Tel: 0191 280 8000, Fax: 0191 280 8080 Email: sales@victor.co.uk Web: www.victor.co.uk
A Federal Signal Company

LEAFLET NO. DS002 REV 1 01/24