



## SPECIFICATION

- ▼ Voltage – 3300 Volt
- ▼ Current – 500 Amp
- ▼ 3 Mains contact tubes
- ▼ Weight – 8.4kg.
- ▼ Conductor CSA up to 185mm<sup>2</sup>

## FEATURES & BENEFITS

- ▼ Crimped or grub screwed contact tubes.
- ▼ No resin required.
- ▼ Fully interchangeable with components designed to BS 3454.
- ▼ Centre pilot version available.
- ▼ Double ended contact tubes available to allow plug in contact pins.

## STANDARDS & CERTIFICATION

EN IEC 60079-0, EN 60079-1

Designed to BS 3454

ATEX Certificate No. Sira 00ATEX1191U

 I M2 Ex db I Mb


UKEX Certificate No. Sira 21UKEX1021U

 I M2 Ex db I Mb

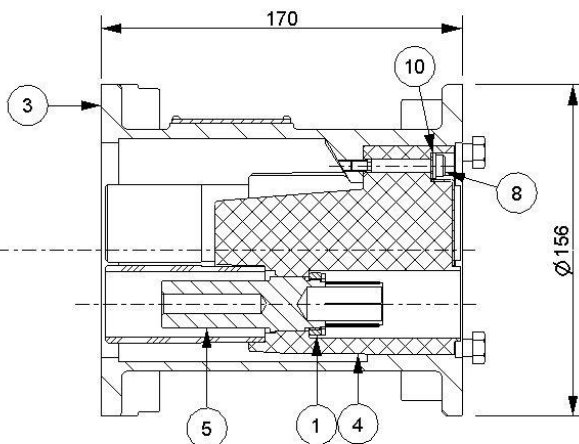
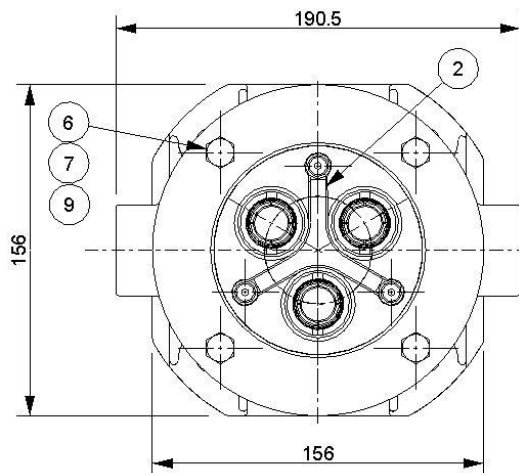


**Victor**

### VICTOR PRODUCTS LIMITED

Unit 3A, Tyne dock East Side, Port of Tyne, South Shields NE33 5SQ United Kingdom  
Tel: 0191 280 8000, Fax: 0191 280 8080 Email: sales@victor.co.uk Web: www.victor.co.uk  
A Federal  Signal Company

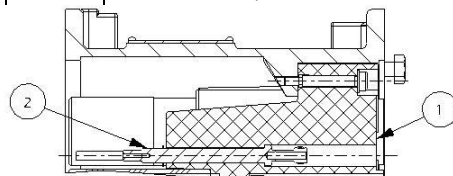
## DIMENSIONS



TYPE AFA33A ADAPTOR WITHOUT CENTRE PILOT

ORDERING REFERENCE	
ITEM NO.	DESCRIPTION
MPV09960521A16	16mm2 - CRIMPED - WITHOUT CENTRE PILOT
MPV09960521A25	25mm2 - CRIMPED - WITHOUT CENTRE PILOT
MPV09960521A35	35mm2 - CRIMPED - WITHOUT CENTRE PILOT
MPV09960521A50	50mm2 - CRIMPED - WITHOUT CENTRE PILOT
MPV09960521A70	70mm2 - CRIMPED - WITHOUT CENTRE PILOT
MPV09960521A95	95mm2 - CRIMPED - WITHOUT CENTRE PILOT
MPV09960521A120	120mm2 - CRIMPED - WITHOUT CENTRE PILOT
MPV09960521A150	150mm2 - CRIMPED - WITHOUT CENTRE PILOT
MPV09960521A185	185mm2 - CRIMPED - WITHOUT CENTRE PILOT
MPV09960522A16	16mm2 - GRUBSCREWED - WITHOUT CENTRE PILOT
MPV09960522A25	25mm2 - GRUBSCREWED - WITHOUT CENTRE PILOT
MPV09960522A35	35mm2 - GRUBSCREWED - WITHOUT CENTRE PILOT
MPV09960522A50	50mm2 - GRUBSCREWED - WITHOUT CENTRE PILOT
MPV09960522A70	70mm2 - GRUBSCREWED - WITHOUT CENTRE PILOT
MPV09960522A95	95mm2 - GRUBSCREWED - WITHOUT CENTRE PILOT
MPV09960522A120	120mm2 - GRUBSCREWED - WITHOUT CENTRE PILOT
MPV09960522A150	150mm2 - GRUBSCREWED - WITHOUT CENTRE PILOT
MPV09960522A185	185mm2 - GRUBSCREWED - WITHOUT CENTRE PILOT
MPV09960526A16	16mm2 - CRIMPED - WITH CENTRE PILOT
MPV09960526A25	25mm2 - CRIMPED - WITH CENTRE PILOT
MPV09960526A35	35mm2 - CRIMPED - WITH CENTRE PILOT
MPV09960526A50	50mm2 - CRIMPED - WITH CENTRE PILOT
MPV09960526A70	70mm2 - CRIMPED - WITH CENTRE PILOT
MPV09960526A95	95mm2 - CRIMPED - WITH CENTRE PILOT
MPV09960526A120	120mm2 - CRIMPED - WITH CENTRE PILOT
MPV09960526A150	150mm2 - CRIMPED - WITH CENTRE PILOT
MPV09960526A185	185mm2 - CRIMPED - WITH CENTRE PILOT
MPV09960529A16	16mm2 - GRUBSCREWED - WITH CENTRE PILOT
MPV09960529A25	25mm2 - GRUBSCREWED - WITH CENTRE PILOT
MPV09960529A35	35mm2 - GRUBSCREWED - WITH CENTRE PILOT
MPV09960529A50	50mm2 - GRUBSCREWED - WITH CENTRE PILOT
MPV09960529A70	70mm2 - GRUBSCREWED - WITH CENTRE PILOT
MPV09960529A95	95mm2 - GRUBSCREWED - WITH CENTRE PILOT
MPV09960529A120	120mm2 - GRUBSCREWED - WITH CENTRE PILOT
MPV09960529A150	150mm2 - GRUBSCREWED - WITH CENTRE PILOT
MPV09960529A185	185mm2 - GRUBSCREWED - WITH CENTRE PILOT
MPV09960520A	PLUG IN CONTACT TUBE - WITHOUT CENTRE PILOT
MPV09960530A	PLUG IN CONTACT TUBE - WITH CENTRE PILOT

SPARE PARTS FOR STYLES WITHOUT CENTRE PILOT			
REF	ITEM NO.	DESCRIPTION	QTY
1	4513	LOCKNUT - CONTACT TUBE	3
2	4786	3.3KV SEMI-SCREEN STAR	1
3	50881A	3.3KV ADAPTOR BODY ASSEMBLY	1
4	50887A	INSULATOR ASSEMBLY WITHOUT CENTRE PILOT	1
5	50898	CONTACT TUBE - 35mm2 - GRUBSCREWED	3
	50898A	CONTACT TUBE - 16mm2 - GRUBSCREWED	3
	50898B	CONTACT TUBE - 25mm2 - GRUBSCREWED	3
	50898C	CONTACT TUBE - 50mm2 - GRUBSCREWED	3
	50898D	CONTACT TUBE - 70mm2 - GRUBSCREWED	3
	50898E	CONTACT TUBE - 95mm2 - GRUBSCREWED	3
	50898F	CONTACT TUBE - 120mm2 - GRUBSCREWED	3
	50898G	CONTACT TUBE - 150mm2 - GRUBSCREWED	3
	50898H	CONTACT TUBE - 185mm2 - GRUBSCREWED	3
	50899	DOUBLE ENDED PLUG IN CONTACT TUBE	3
	50902	CONTACT TUBE - 35mm2 - CRIMPED	3
	50902A	CONTACT TUBE - 50mm2 - CRIMPED	3
	50902B	CONTACT TUBE - 70mm2 - CRIMPED	3
	50902C	CONTACT TUBE - 95mm2 - CRIMPED	3
	50902D	CONTACT TUBE - 120mm2 - CRIMPED	3
	50902E	CONTACT TUBE - 150mm2 - CRIMPED	3
	50902F	CONTACT TUBE - 185mm2 - CRIMPED	3
	50902G	CONTACT TUBE - 25mm2 - CRIMPED	3
	50902H	CONTACT TUBE - 16mm2 - CRIMPED	3
6	GPC10-6	NUT - M8	4
7	GPC11-20	SCREW - M8 X 50 LONG HEX HEAD	4
8	GPC12-18	M5 SOCKET HEAD SHOULDER SCREW	3
9	GPC20-2	SPRING WASHER - 8 I.D	4
10	GPC20-11	PLAIN WASHER - 6 I/D - BRASS	3



CHANGES FOR STYLES WITH CENTRE PILOT			
REF	ITEM NO.	DESCRIPTION	QTY
1	50884/A	INSULATOR ASSEMBLY WITH CENTRE PILOT	1
2	50885/AS	PILOT CONTACT TUBE ASSEMBLY	1
SEMI SCREENED STAR ITEM NO. 4786 NOT REQUIRED FOR STYLES WITH CENTRE PILOT			

