

# 500 AMP Bolted Socket



Type 53DBSA

## SPECIFICATION

- ▼ Provision of 3 power, 1 pilot and 2 auxiliary contacts with scraping earth facility. Full integral earth screening through insulator.  
Current rating - 500 Amps.  
Voltage - 1100/3300 Volts.
- ▼ Restrained and bolted versions available.  
Weight - 11.6Kgs.

## FEATURES

- ▼ Minimal spares stockholding.
- ▼ Compact size and weight.
- ▼ Common parts used in restrained and bolted versions.
- ▼ Two voltage modes - 1100 and 3300V.
- ▼ Simple serviceable design.
- ▼ Fully waterproof.

## STANDARDS/APPROVALS

EN 50014: 1997 and EN 50018: 2000.

Socket flange mounting design interchangeable to BS 5620.

Component Certificate BASEEFA 02ATEX0127U.

**Victor**

**VICTOR PRODUCTS LIMITED**

New York Way New York Industrial Park Newcastle upon Tyne NE27 0QF United Kingdom

Tel: 0191 280 8000 Fax: 0191 280 8080 e-mail: sales@victor.co.uk <http://www.victor.co.uk>



## APPLICATION

To facilitate the connection of trailing cables, fitted with a suitable mating Type 30PA plug, to high powered machinery such as: coal face shearers, continuous miners, roadheaders and other large capacity apparatus. Suitable for deep mine and opencast environments.

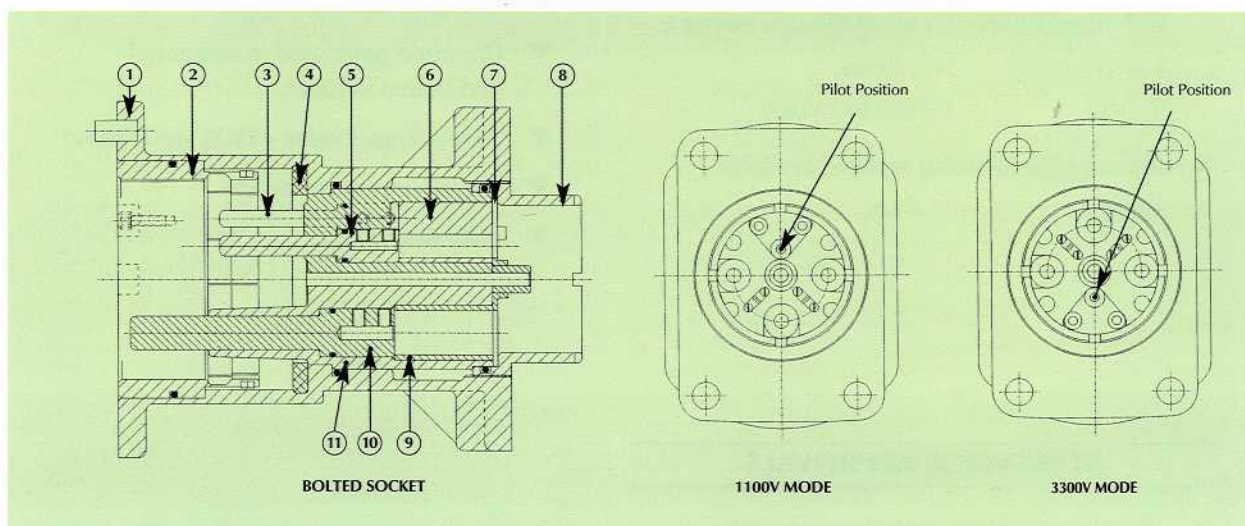
Certified for Group 1 hazardous areas can be used in systems with or without electrical interlock by means of pilot circuit.

## SPARE PARTS

The design is serviceable which enables key parts to be easily replaced. See spare parts data.

## SPARE PARTS

ITEM	ORDER REFERENCE	NO. PER SET	DESCRIPTION
1	MC 924992	1	Bolted Body Assembly
2	MC 50491/A	1	Earth Sleeve Assembly
3	MC 50277/A	2	Auxiliary Contact Pin Assembly
4	MC 50500	1	Interface Seal
5	MC 50252/A	1	Pilot Contact Pin Assembly
6	MC 50489	1	Auxiliary/Pilot Pin Spacer
7	MC 50492/A	1	Earth Plate Assembly
8	MC 50250/A	1	Spigot Assembly
9	MC 50488	3	Main Pin Spacer
10	MC 50251/A	3	Main Pin Assembly (grubscrew) Pilot Bored
10 a	MC 50738/A	3	Main Pin Assembly - crimped 120mm <sup>2</sup>
10 b	MC 50630/A	3	Main Pin Assembly - crimped 70mm <sup>2</sup>
10 c	MC 50608/A	3	Main pin Assembly - crimped 95mm <sup>2</sup>
11	MC 50849E	1	Insulator



## ORDERING REFERENCES

ORDER REFERENCE	DESCRIPTION
MCV 04420508A	500A Bolted Socket, grubscrew contact pins, pilot bored
MCV 04420502A	500A Bolted Socket, grubscrew contact pins, bored for 70 mm <sup>2</sup> cable
MCV 04420509A	500A Bolted Socket, grubscrew contact pins, bored for 95 mm <sup>2</sup> cable
MCV 04420503A	500A Bolted Socket, crimped contact pins for 70 mm <sup>2</sup> cable
MCV 04420510A	500A Bolted Socket, crimped contact pins for 95 mm <sup>2</sup> cable
MCV 04420300A	500A Bolted Socket, crimped contact pins for 120 mm <sup>2</sup> cable
MCV 04420500A	500A Bolted Socket, grubscrew contact pins, for 120 mm <sup>2</sup> cable