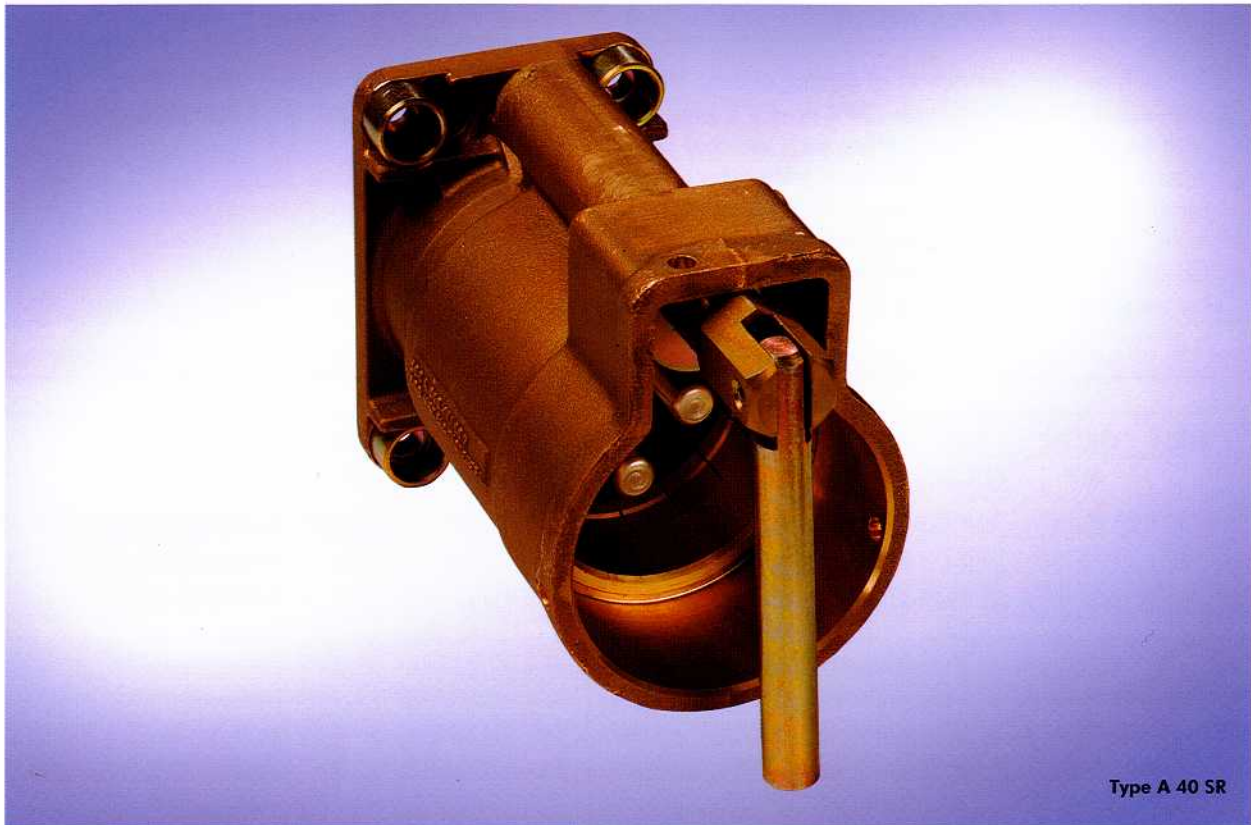


350 AMP Restrained Socket



SPECIFICATION

- ▼ Provision of 3 power and 1 pilot contact with scraping earth facility. Full integral earth screening through insulator.

Current rating - 350 Amps.

Voltage - 1350/650 Volts.

Weight - 11kg.

FEATURES

- ▼ Minimal spares stockholding.
- ▼ Compact size and weight.
- ▼ Two voltage modes - 1300-650 volts.
- ▼ Simple serviceable design.
- ▼ Fully waterproof.

STANDARDS/APPROVALS

EN 50014: 1997 and EN 50018: 2000.

Component Certificate
BASEEFA 02ATEX0104U.

Victor

VICTOR PRODUCTS LIMITED

New York Way New York Industrial Park Newcastle upon Tyne NE27 0QF United Kingdom

Tel: 0191 280 8000 Fax: 0191 280 8080 e-mail: sales@victor.co.uk <http://www.victor.co.uk>

APPLICATION

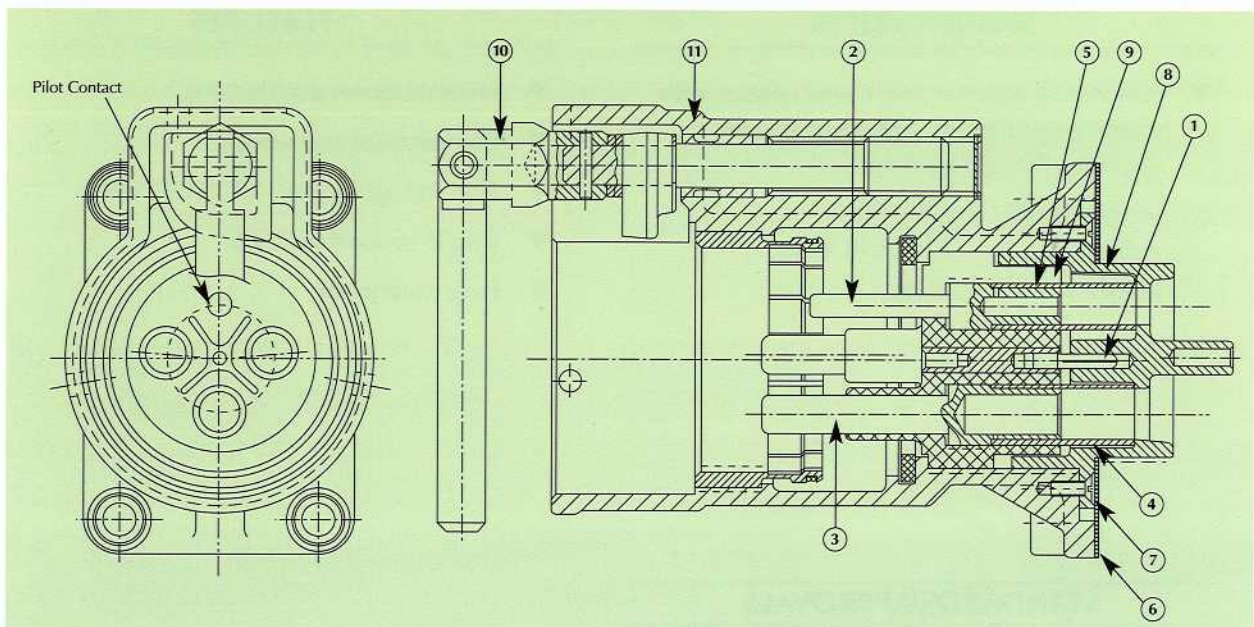
To facilitate the connection of trailing cables, fitted with a suitable mating Type 23PR or 40PR plug, to high powered mining machinery such as: coal face shearers, continuous miners, roadheaders and other large capacity apparatus. Suitable for deep mine and opencast environments. Certified for Group 1 hazardous areas where electrical interlock by means of a pilot circuit is an essential system requirement.

SPARE PARTS

The design is serviceable which enables key parts to be easily replaced. See spare parts data.

SPARE PARTS

ITEM	ORDER REF.	NO. PER SET	DESCRIPTION	ITEM	ORDER REF.	NO. PER SET	DESCRIPTION
1	123240	1	Earth Pin	4	123534	3	Insulating Sleeve
2	123530	1	Pilot Pin 25mm G/screw	5	123535	1	Insulating Sleeve
		1	Pilot Pin 4mm Crimped	6	123541	1	Gasket
		1	Pilot Pin 4mm G/screw	7	217213	2	Screw
3	123531E	3	120mm Mains Pin (Crimped)	8	923428	1	Retaining Cap
	123531AE	3	95mm Mains Pin (Crimped)	9	923529E	1	Insulator
	123531BE	3	70mm Mains Pin (Crimped)	10	923954	1	Withdrawal Spindle
	924715B	3	95mm Mains Pin G/screw	11	925002	1	Socket Body Assembly
	924715A	3	120mm Mains Pin G/screw				
	924715D	3	35mm Mains Pin G/screw				



ORDERING DETAILS

ORDER REFERENCE	DESCRIPTION
MCA 002767E	350 Amp Restrained Socket 120mm mains 25mm Pilot Crimped
MCA 002767AE	350 Amp Restrained Socket 95mm mains 4mm Pilot Crimped
MCA 002767BE	350 Amp Restrained Socket 70mm mains 4mm Pilot Crimped
MCA 002767AGE	350 Amp Restrained Socket 95mm mains 4mm Pilot G/screw
MCA 002767DE	350 Amp Restrained Socket 95mm mains 25mm Pilot Crimped
MCA 002767GE	350 Amp Restrained Socket 120mm mains 4mm Pilot G/screw
MCA 002767CGE	350 Amp Restrained Socket 35mm mains 4mm Pilot G/screw