

1300 Volt 250 Amp Restrained Coupler



Type A42SCR

SPECIFICATION

- ▼ Provision of 3 power and 1 pilot contact with scraping earth facility.
- ▼ Full integral earth screening through insulator.
- ▼ Current rating - 250 Amps.
- ▼ Voltage - 1300 Volts.
- ▼ Restrained version only.
- ▼ Weight - 12Kgs.

FEATURES

- ▼ Compact size and weight.
- ▼ Fully waterproof.
- ▼ Provision of padlock facility at both ends.

STANDARDS/APPROVALS

- ▼ Approved to EN 50014: 1997 and EN 50018: 2000
- ▼ Certificate No Baseefa02ATEX0105
- ▼ Indian Certification
Test report No ERTL (E) TES/V051/0002/09-06

APPLICATION

The connection of two trailing cables fitted with suitable mated plugs, where advances in mine workings have taken place. Suitable for deep mine and opencast environments. Certified for Group 1 hazardous areas where electrical interlock by means of a pilot circuit is an essential system requirement.

These plug couplers are ideal for situations where mechanical damage to cables is likely to occur, such as mid coal face. They are also suitable for extending cable runs in advancing tunnels etc.

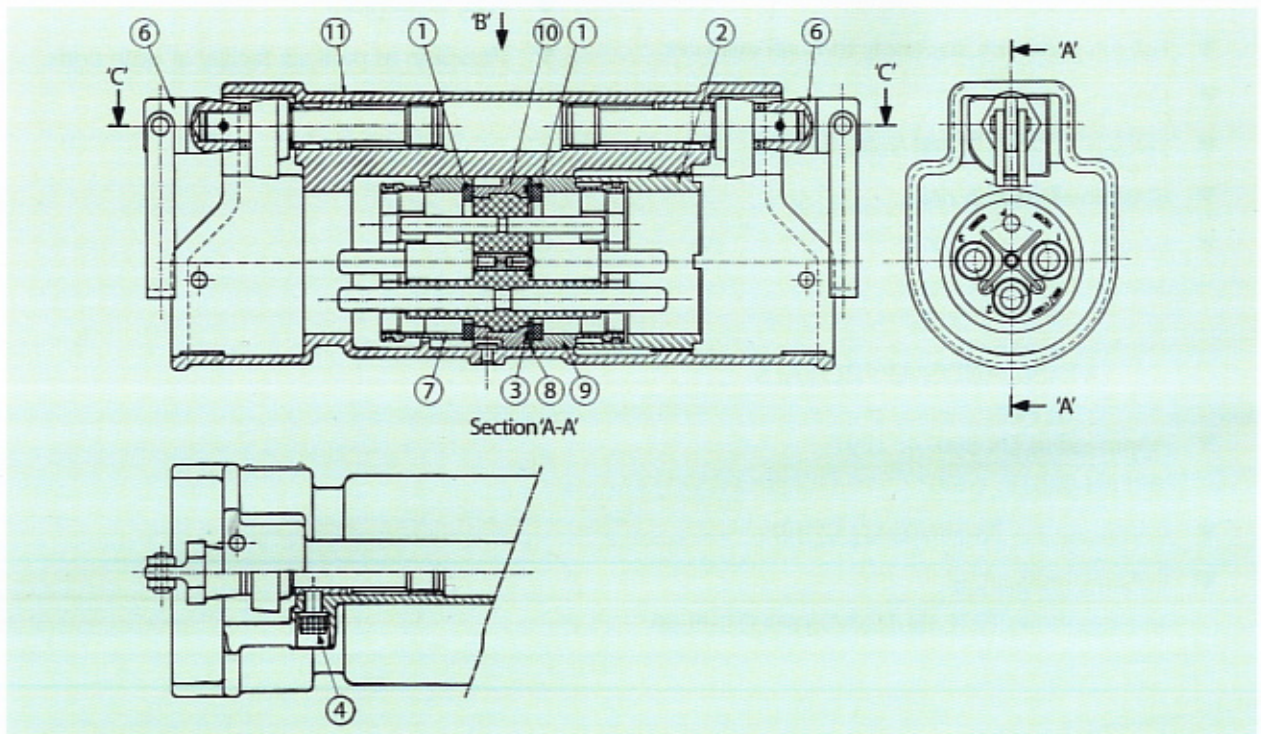
SPARE PARTS

The design is serviceable which enables key parts to be easily replaced.

See spare parts data.

SPARE PARTS

ITEM	ORDER REFERENCE	NO. PER SET	DESCRIPTION
1	121527	2	Gasket
2	123573	1	Retaining Sleeve
3	124041	1	'O' Ring
4	218202	2	Socket Head Screw
6	921233	2	Withdrawal Spindle
7	923358	1	Earth Scraper
8	923572	1	Earthing Disc
9	923576	1	Earth Scraper
10	923582	1	Insulator
11	925065S	1	Coupler Body



ORDERING REFERENCES

ORDER REFERENCE	DESCRIPTION
-----------------	-------------